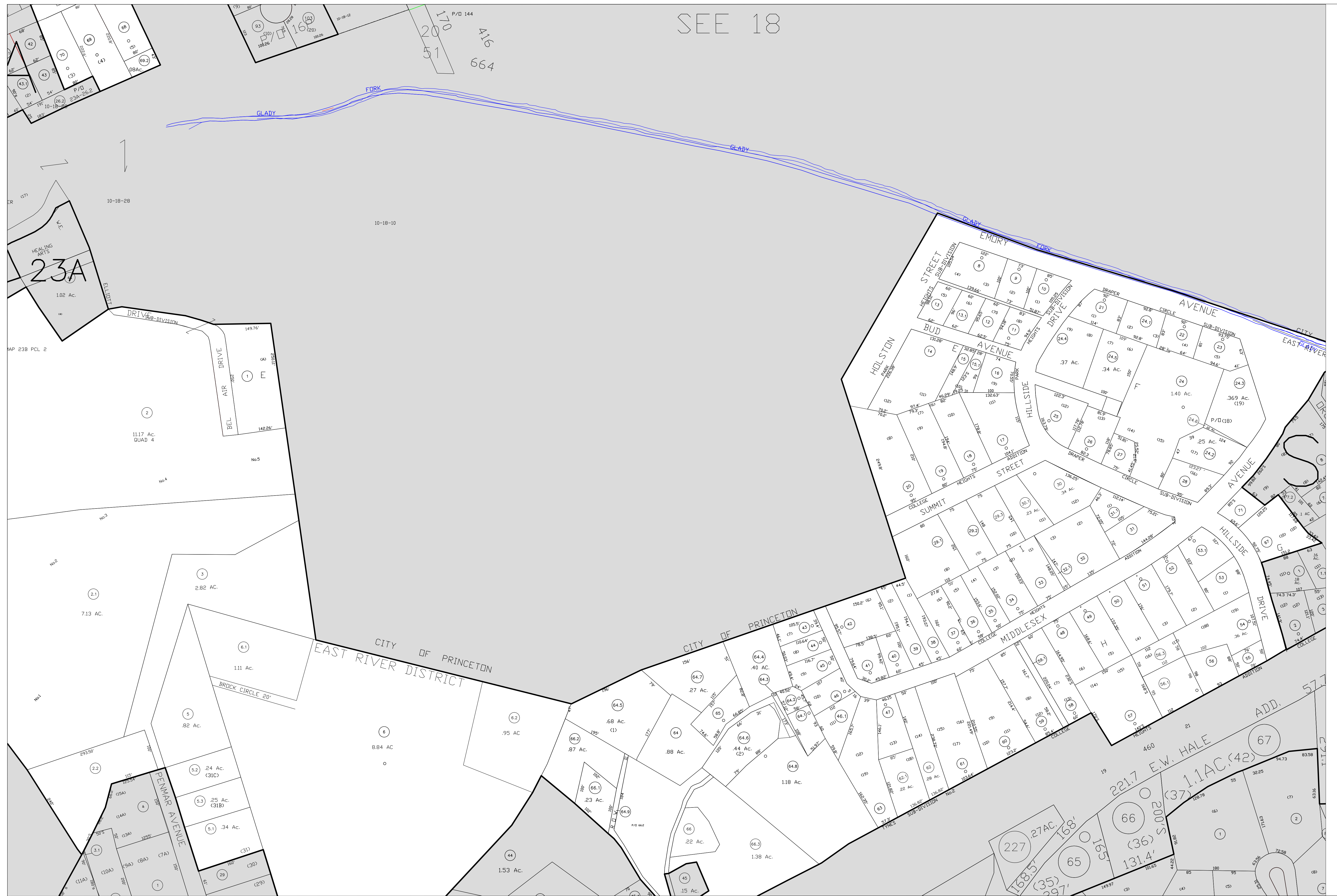


SEE 18



FOR TAX PURPOSES ONLY
 Prepared by
 Mercer County Assessor's Office
 Princeton, West Virginia

This tax map was compiled for the purpose of taxation from available record evidence and has not been field verified. This map is not a valid survey plat and the data on the map does not imply any official status to such data. The State of West Virginia and the Mercer County Assessor's Office assume no liability that might result from the use of this map.

Legend

Property line	—————	Deed lot number (in parenthesis)	(15)
Original lot line	Parcel or index number (in circle)	(99)
Corporation line	—————	Improvement	○
District line	—————	Edge of pavement	-----
County line	—————	Railroad	

Date of Last Revision: 07-01-2010

Map Key

MERCER COUNTY
 WEST VIRGINIA
 Office of Assessor

EAST RIVER

City - Town - District: _____

Map No: 23B

Scale: 1"=100' Date Printed: _____