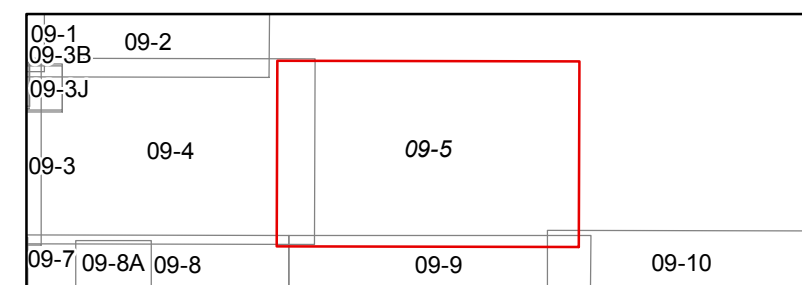


FOR TAX PURPOSES ONLY  
 Prepared By  
 Mercer County Assessor's Office  
 Princeton, West Virginia

This tax map was compiled for the purpose of taxation from available record evidence and has not been field verified. This map is not a valid survey plat and the data on the map does not imply any official status to such data. The State of West Virginia and the Mercer County Assessor's Office assume no liability that might result from the use of this map.

Legend	
Property Line	Original Lot Line
Road Right of Way	Lot Number
Corporation Line	Parcel Number
District Line	Water
County Line	Railroad



**MERCER COUNTY**  
**WEST VIRGINIA**  
 Office of Assessor



PLYMOUTH  
 Map: 5  
 Date, Aerial Photography: 2010  
 Date, Map: 7/5/2017  
 Scale: 1" = 400'