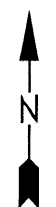


This tax map is a copy of the Assessor's official record and the reproduction, copying, distribution or sale of such tax maps or any copies thereof without the written permission of the County Assessor is prohibited.

For Tax Purposes Only

Prepared by
KEYSTONE MAPPING COMPANY, INC.
 Photogrammetric Engineers
 York, Pennsylvania



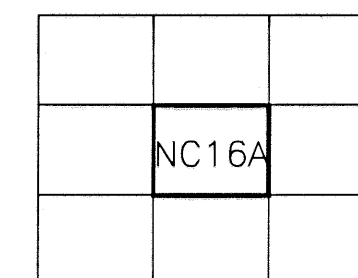
Legend

| | | | |
|------------------|-------|--------------------------------|-------|
| Property line | _____ | Original lot line | _____ |
| Edge of Pavement | _____ | Dead lot number in parenthesis | (15) |
| Corporation line | _____ | Parcel or index number | ①②③ |
| District line | _____ | Improvement | ○ |
| County line | _____ | Railroad | +++++ |
| State line | _____ | | |

Revisions

| | |
|---|----|
| 1 | 9 |
| 2 | 10 |
| 3 | 11 |
| 4 | 12 |
| 5 | 13 |
| 6 | 14 |
| 7 | 15 |
| 8 | 16 |

MAP REFERENCE



MINERAL COUNTY
 Office of Assessor
 For Tax Purposes Only

NEW CREEK

Map No.: **NC 16A** FILE NAME: NC06-16A.DWG
 Date Aerial Photography: _____ Date of Map: 04/6/87
 Photo No.: _____ Scale: 1" = 100'