

PM-3 PM-4
PM-2

PM-1 PM-2
PM-3 PM-4

P/O 4-33

P/O PD 2016

1
1.69 AC.

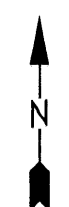
46

PM-5 PM-7

This tax map is a copy of the Assessor's official record and the reproduction, copying, distribution or sale of such tax maps or any copies thereof without the written permission of the County Assessor is prohibited.

For Tax Purposes Only

Prepared by
KEYSTONE MAPPING COMPANY, INC.
Photogrammetric Engineers
York, Pennsylvania



Legend

Property line	-----	Original lot line	-----
Edge of Pavement	-----	Deed lot number in parenthesis (19)	
Corporation line	-----	Parcel or index number (999.9)	
District line	-----	Improvement	o
County line	-----	Railroad	+++++
State line	-----		

Revisions

1	9
2	10
3	11
4	12
5	13
6	14
7	15
8	16

MAP REFERENCE

3	4	5
	6	7

MINERAL COUNTY
Office of Assessor
For Tax Purposes Only

PIEDMONT

Map No.: 6 FILE NAME: PM09-06.DWG
Date, Aerial Photography: _____ Date of Map: 2/28/74
Photo No.: _____ Scale: 1" = 100'