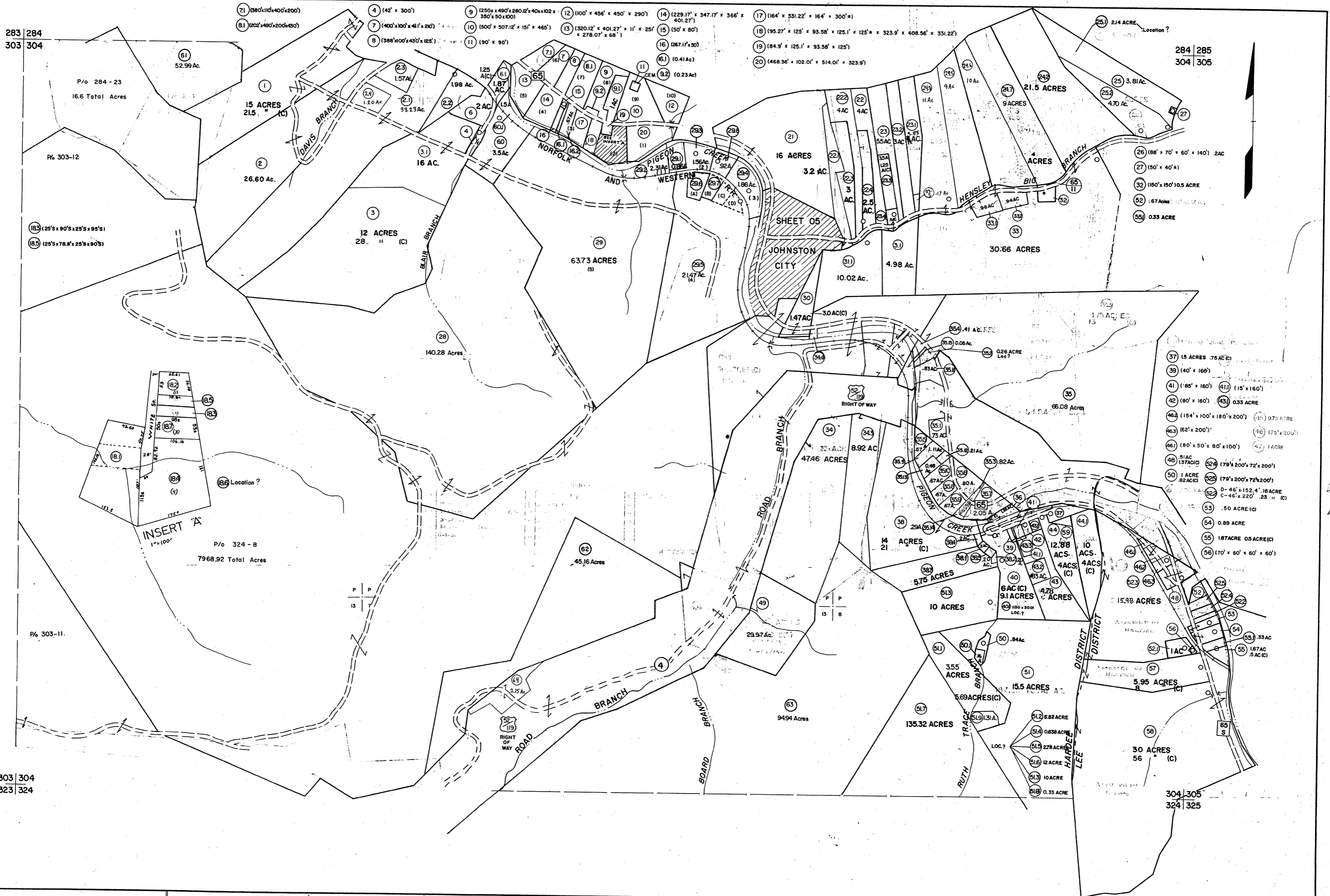


283 284  
303 304

284 285  
304 305



303 304  
323 324

304 305  
324 325

**For Tax Purposes Only**

Prepared by  
**MICHAEL BAKER, JR., INC.**  
Consulting Engineers  
Rochester, Pennsylvania

**Legend**

Property line	—————	Original lot line	-----
Edge of pavement or roadway	—————	Dead lot number	(15)
Corporation line	-----	Parcel or index number	(37)
District line	-----	Improvement	○
County line	-----	Railroad	—+—

**Revisions**

1	9-18-68	9	2-5-78 AM	17	8/11 Lm
2	10-1-68	10	10-27-78 AM	18	
3	9-25-74 Change	11	2-9-78 AM	19	
4	3-31-74	12	5-98 AM	20	
5	10-10-86 PENTREE	13	1-88 AM	21	
6	6-1-87 L.E.S.	14	5-01 AM	22	
7	Revised to 2-5-87	15	BAH 4-05	23	
8	Revised to 1-1-90	16	BAH 10-87	24	

**KEY MAP**



**MINGO COUNTY**  
STATE OF WEST VIRGINIA  
Office of Assessor

DISTRICT  
**HARDEE LEE**

**SHEET NO: 304**

Date, Aerial Photography: April, 1961  
Photo No: \_\_\_\_\_  
Date, Map: July, 1962  
Scale: 1" = 400'