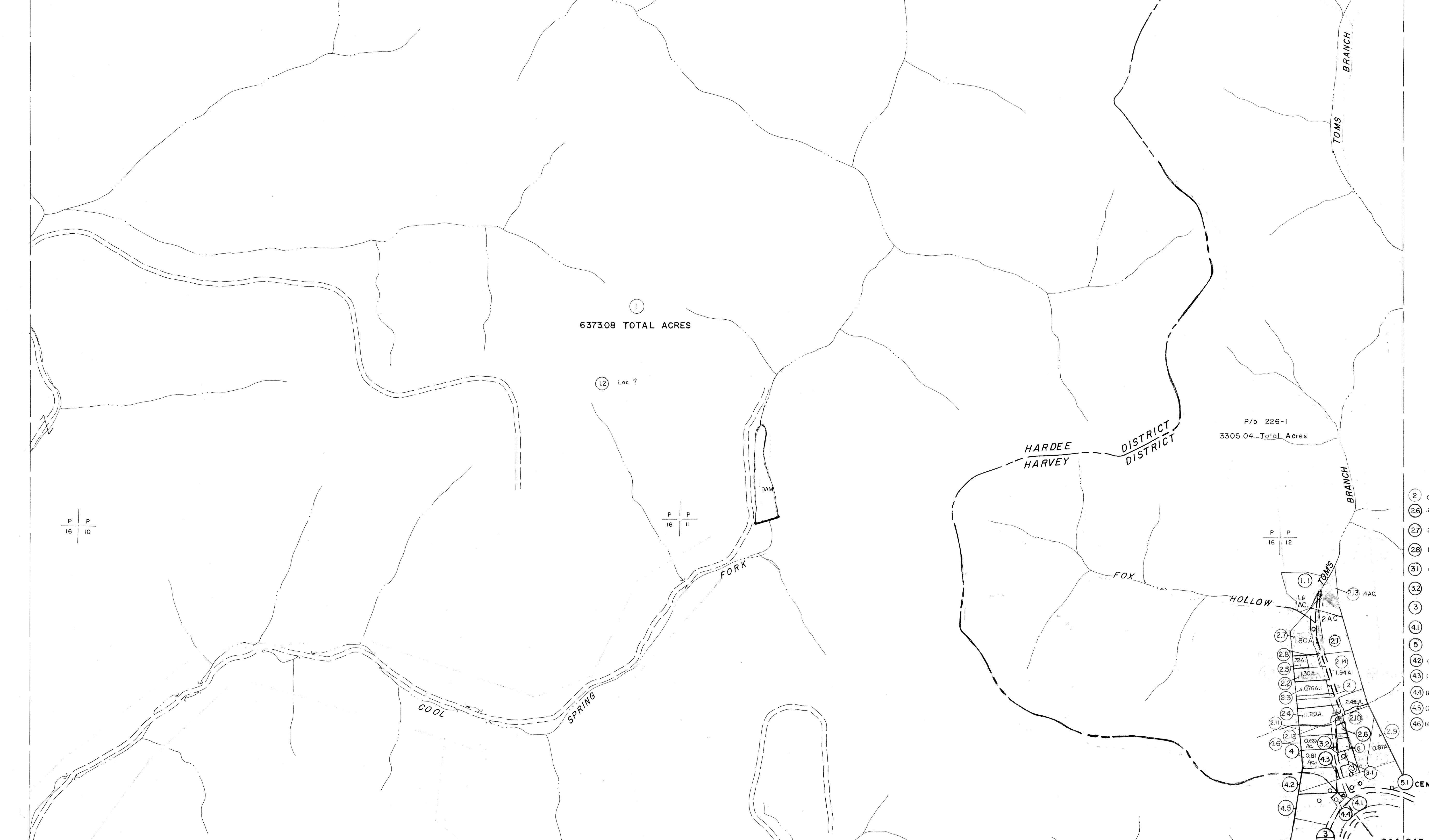


223 224
243 244

224 225
244 245



243 244
263 264

244 245
264 265

- 2 0.31 ACRE
- 2.6 2.3 ACRE
- 2.7 3.25 ACRES 1.42 ACRES (C)
- 2.8 (70'x127'x101'x127') .25 ACRE
- 3.1 (50'x75') .086 ACRE
- 3.2 (50'x75') .086 ACRE (C)
- 3 0.33 ACRE
- 4.1 (50'Sx 40'Sx 60'Sx 71.5')
- 5 0.5 ACRE 0.37 ACRES (C)
- 4.2 (200' x 276')
- 4.3 (180' x 127' x 47')
- 4.4 (62' x 74.5' x 69' x 71.5')
- 4.5 (290' x 337' x 210' x 276' x 69' x 74.5')
- 4.6 (40' x 60' x 30' x 60')

For Tax Purposes Only

Prepared by
MICHAEL BAKER, JR., INC.
Consulting Engineers
Rochester, Pennsylvania

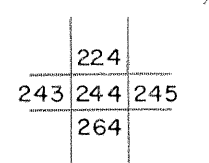
Legend

Property line	—————	Original lot line	—————
Edge of pavement or roadway	—————	Deed lot number	(15)
Corporation line	—————	Parcel or index number	(99)
District line	—————	Improvement	O
County line	—————	Railroad	—————

Revisions

1	10-1-63	9	3/05 3AA	17	
2	11-1-63	10		18	
3	3-31-64	11		19	
4	9-5-66 PENTREE	12		20	
5	6-1-87 L.E.S.	13		21	
6	1-1-93 A.M.	14		22	
7	1-27-94	15		23	
8	1-28-94	16		24	

KEY MAP



MINGO COUNTY
STATE OF WEST VIRGINIA
Office of Assessor

DISTRICT
HARDEE HARVEY

SHEET NO: 244

Date, Aerial Photography: April, 1961 Date, Map: July, 1962
Photo No: Scale: 1" = 400'