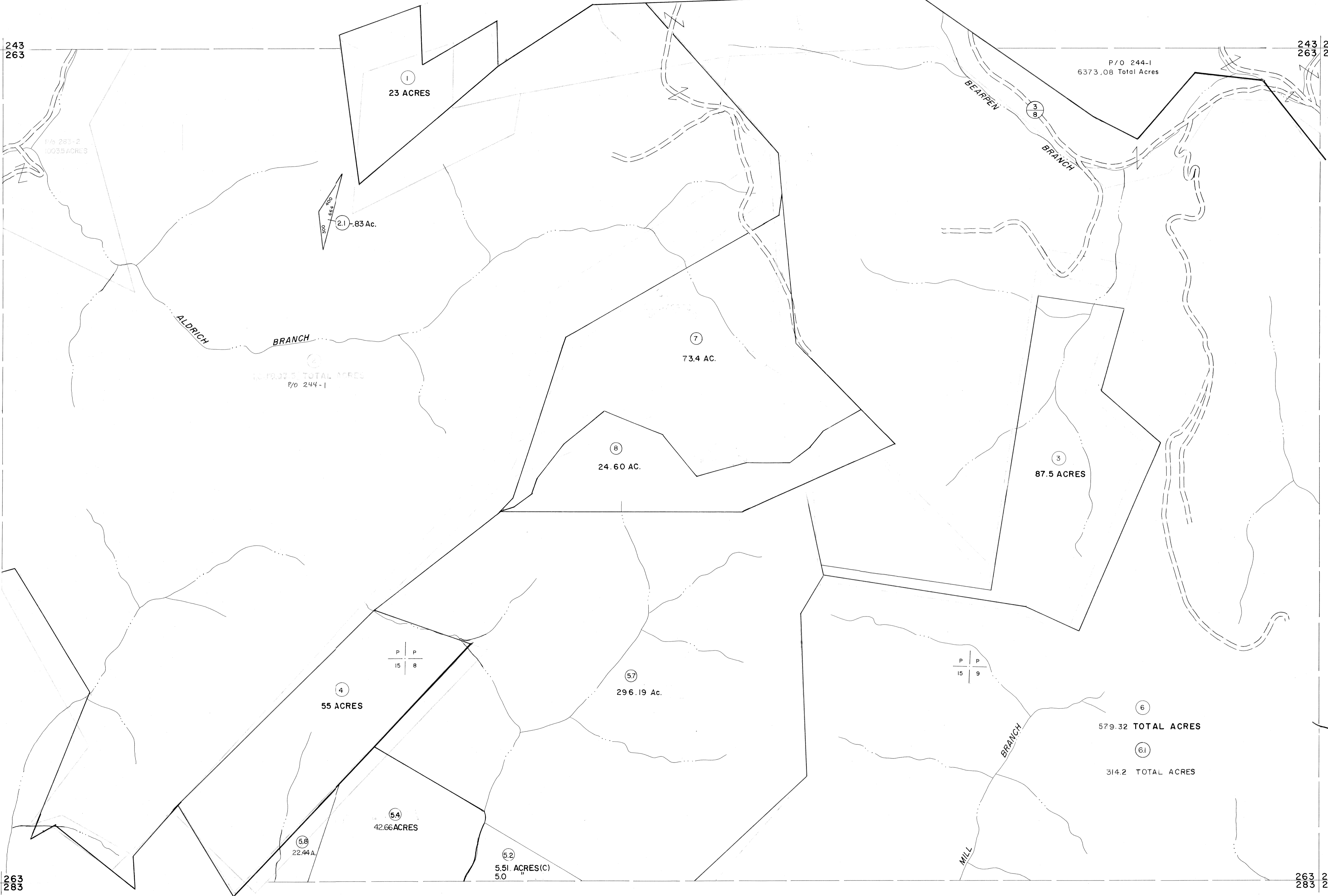


242 243
262 263

243 244
263 264

262 263
282 283

263 264
283 284



For Tax Purposes Only

Prepared by
MICHAEL BAKER, JR., INC.
Consulting Engineers
Rochester, Pennsylvania

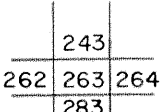
Legend

Property line	—————	Original lot line	-----
Edge of pavement or roadway	-----	Deed lot number	(15)
Corporation line	-----	Parcel or index number	(22)
District line	-----	Improvement	O
County line	-----	Railroad	—+—+—+—

Revisions

1	10-1-63	9	17
2	9-24-74	10	18
3	3-31-84	11	19
4	9-4-86 PENTREE	12	20
5	6-1-87 L.E.S.	13	21
6	Revised 10-15-89	14	22
7	1-97 AM	15	23
8	3/02 EAM	16	24

KEY MAP



MINGO COUNTY
STATE OF WEST VIRGINIA
Office of Assessor

DISTRICT **HARDEE**

SHEET NO: 263

Date, Aerial Photography: April, 1961
Date, Map: July, 1962
Photo No. Scale: 1" = 400'