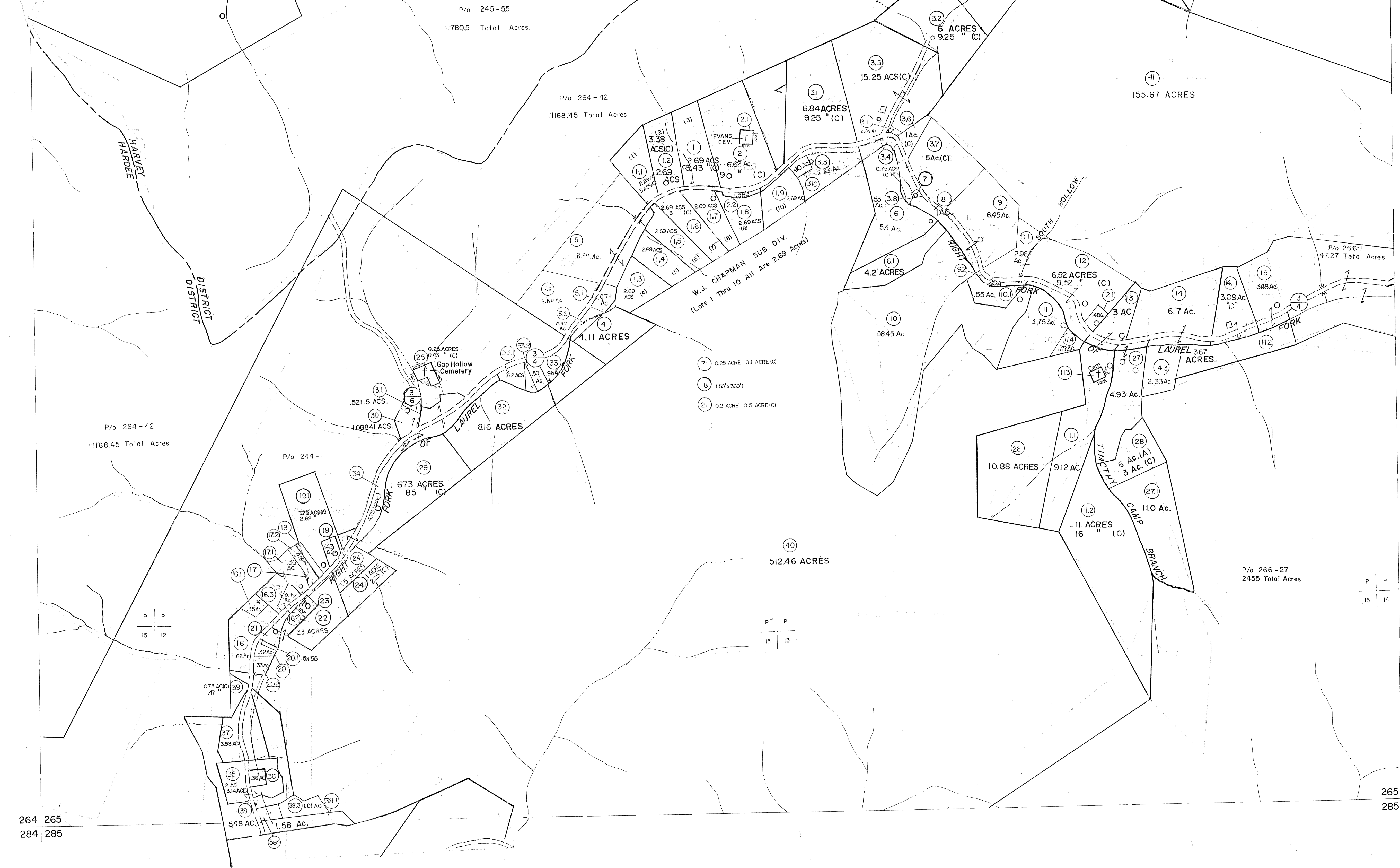


244 245  
264 265

245 246  
265 266



For Tax Purposes Only

Prepared by  
MICHAEL BAKER, JR., INC.  
Consulting Engineers  
Rochester, Pennsylvania

**Legend**

Property line	Original lot line	(15)
Edge of pavement or roadway	Dead lot number	99
Corporation line	Parcel or index number	00
District line	Improvement	
County line	Railroad	

**Revisions**

1	9-15-65	9	2-4-73 AM	17
2	10-1-63	10	1-77 AM	18
3	9/24/74	11	6-78 AM	19
4	3-31-84	12	1-00 AM	20
5	9/11/88	13	2-01 AM	21
6	6-1-87	14	3/05 B.M.	22
7	Revised to 7-1-88	15	8-00 AM	23
8	Revised to 1-1-90	16		24

KEY MAP

**MINGO COUNTY**  
STATE OF WEST VIRGINIA  
Office of Assessor

DISTRICT  
**HARDEE**

**SHEET NO: 265**

Date, Aerial Photography: April, 1961  
Photo No:

Date, Map: July, 1962  
Scale: 1" = 400'