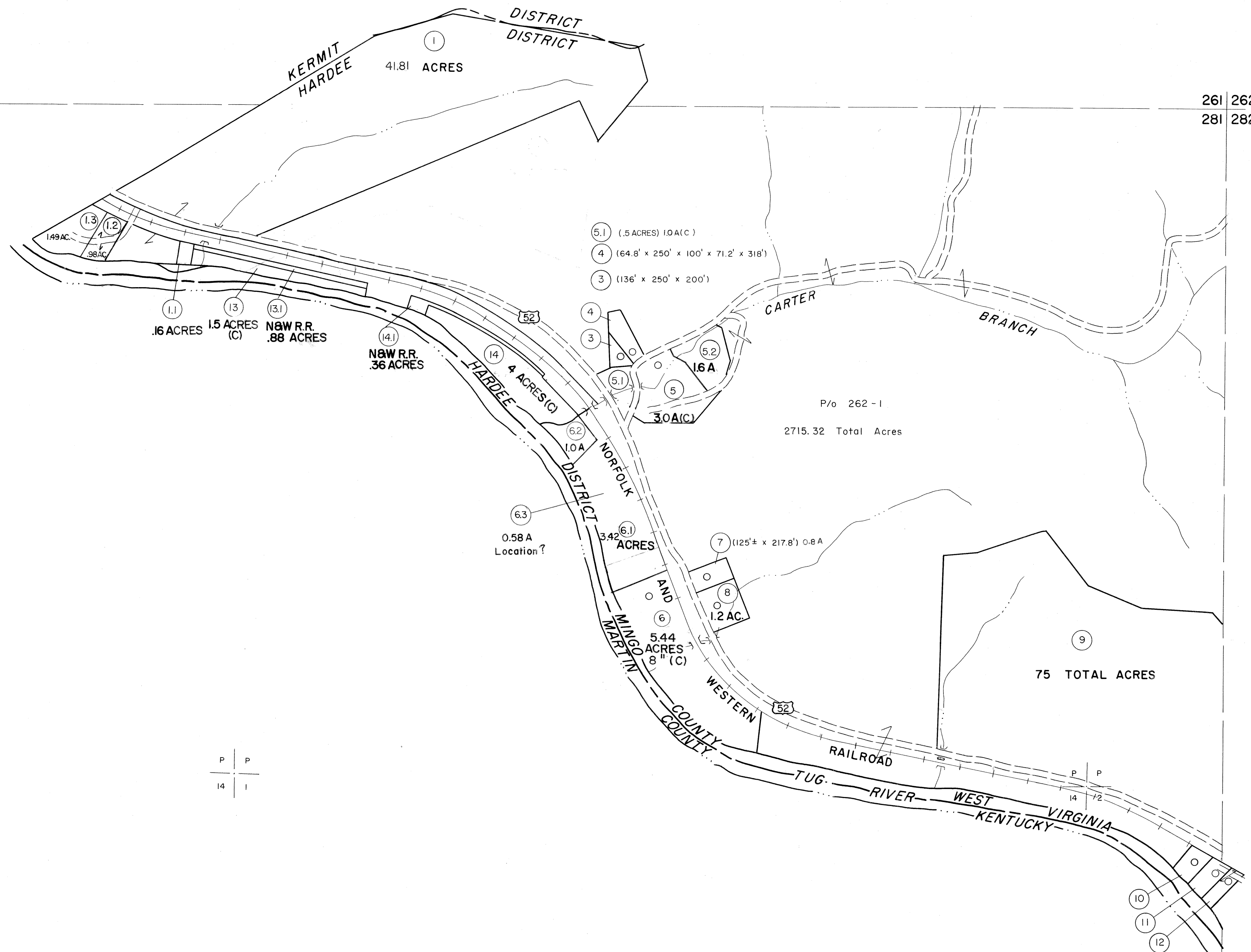


260 | 261
281

261 | 262
281 | 282



P P
14 1

- 10 0.371 ACRE
- 11 0.471 ACRE
- 12 (75' x 270' x 75' x 240')

281

281 | 282
302

For Tax Purposes Only
 Prepared by
MICHAEL BAKER, JR., INC.
Consulting Engineers
 Rochester, Pennsylvania

Legend	
Property line	—————
Edge of pavement or roadway	———+———
Corporation line	-----
District line	- - - - -
County line	—————
Original lot line	-----
Deed lot number	(15)
Parcel or index number	(29)
Improvement	o
Railroad	—+—+—+—

Revisions			
1	10-1-63	9	17
2	3-31-64	10	18
3	8-1-66 PENTREE	11	19
4	6-1-67 L.E.S.	12	20
5	1-27-68	13	21
6		14	22
7		15	23
8		16	24

KEY MAP

MINGO COUNTY
 STATE OF WEST VIRGINIA
 Office of Assessor

DISTRICT **HARDEE**
SHEET NO: 281
 Date, Aerial Photography: April, 1961 Date, Map: July, 1962
 Photo No: Scale: 1" = 400'