

261 262
281 282

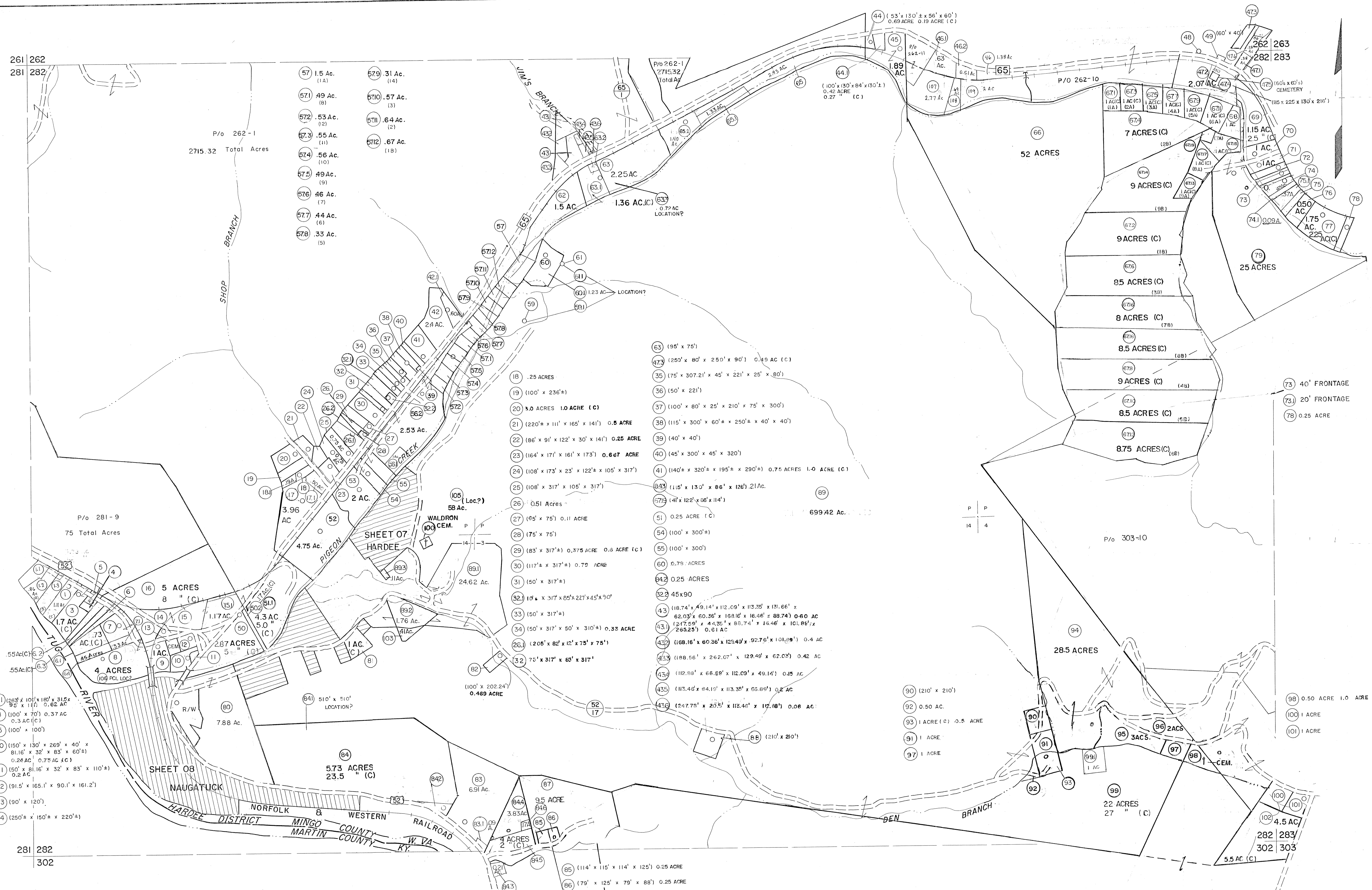
P/O 262-1
2715.32 Total Acres

- 57 1.5 Ac. (1A)
- 57.1 49 Ac. (8)
- 57.2 .53 Ac. (12)
- 57.3 .55 Ac. (11)
- 57.4 .56 Ac. (10)
- 57.5 49 Ac. (9)
- 57.6 46 Ac. (7)
- 57.7 44 Ac. (16)
- 57.8 .33 Ac. (5)
- 57.9 .31 Ac. (14)
- 57.10 .57 Ac. (3)
- 57.11 .64 Ac. (2)
- 57.12 .67 Ac. (18)

P/O 281-9
75 Total Acres

- 1.1 (263' x 107' x 180' x 315' x 95' x 111') 0.62 AC
- 4 (100' x 70') 0.37 AC
- 5 (100' x 100')
- 10 (150' x 130' x 289' x 40' x 81.16' x 32' x 83' x 60'±) 0.24 AC (0.75 AC (C))
- 11 (50' x 81.16' x 32' x 83' x 110'±) 0.2 AC
- 12 (91.5' x 165.1' x 90.1' x 161.2')
- 13 (90' x 120')
- 14 (250'± x 150'± x 220'±)

281 282
302



For Tax Purposes Only
 Prepared by
MICHAEL BAKER, JR., INC.
 Consulting Engineers
 Rochester, Pennsylvania

Legend	
Property line	Original lot line
Edge of pavement or roadway	Deed lot number
Corporation line	Parcel or index number
District line	Improvement
County line	Railroad

Revisions			
1	8-15-65	9	1-13-95 AM
2	10-1-65	10	1-21-95 AM
3	9-23-74	11	1-20-95 AM
4	3-31-84	12	3/25/95 B.A.M.
5	9/1/86	13	PENTREE
6	6-1-87	14	L.E.S.
7	Revised to 2-15-89	15	
8	Revised to 1-1-90	16	

KEY MAP

MINGO COUNTY
 STATE OF WEST VIRGINIA
 Office of Assessor

DISTRICT
HARDEE
 SHEET NO: 282
 Date, Aerial Photography: April, 1961
 Photo No: _____
 Date, Map: July, 1962
 Scale: 1" = 400'