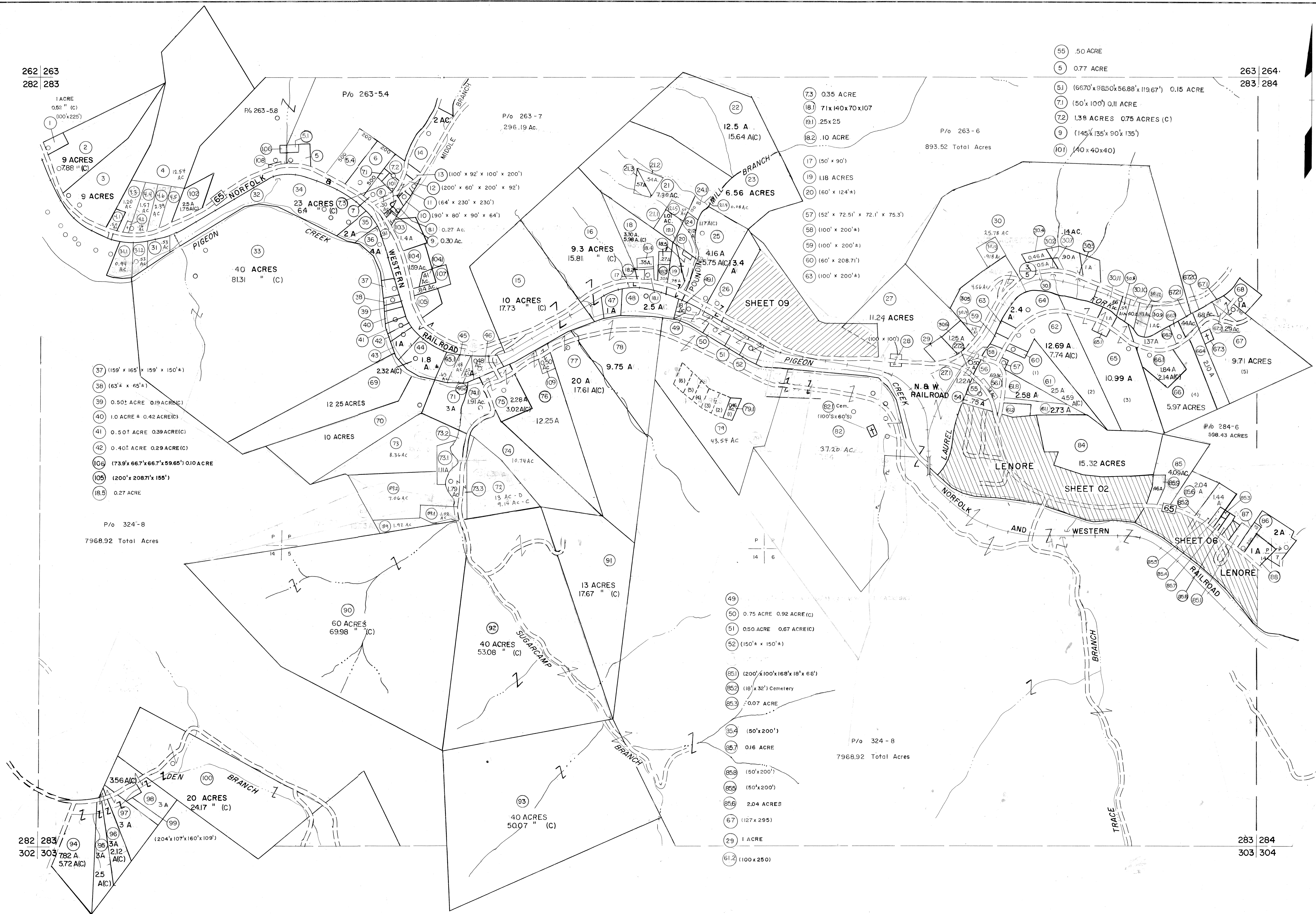


262 263
282 283

263 264
283 284



For Tax Purposes Only
 Prepared by
MICHAEL BAKER, JR., INC.
 Consulting Engineers
 Rochester, Pennsylvania

Legend	
Property line	—
Edge of pavement or roadway	—
Corporation line	—
District line	—
County line	—
Original lot line	—
Deed lot number	(15)
Parcel or index number	(22)
Improvement	o
Railroad	—

Revisions	
1	9-18-68
2	10-1-68
3	9-23-74
4	3-31-88
5	9-16-86
6	1-87
7	2-15-89
8	1-1-90
9	2-2-93
10	1-97
11	6-98
12	1-00
13	3/05
14	
15	
16	
17	
18	
19	
20	
21	
22	
23	
24	

KEY MAP
 263
 282 283 284
 303

MINGO COUNTY
 STATE OF WEST VIRGINIA
 Office of Assessor

DISTRICT
HARDEE
 SHEET NO: 283
 Date, Aerial Photography: April, 1961
 Date, Map: July, 1962
 Photo No:
 Scale: 1" = 400'