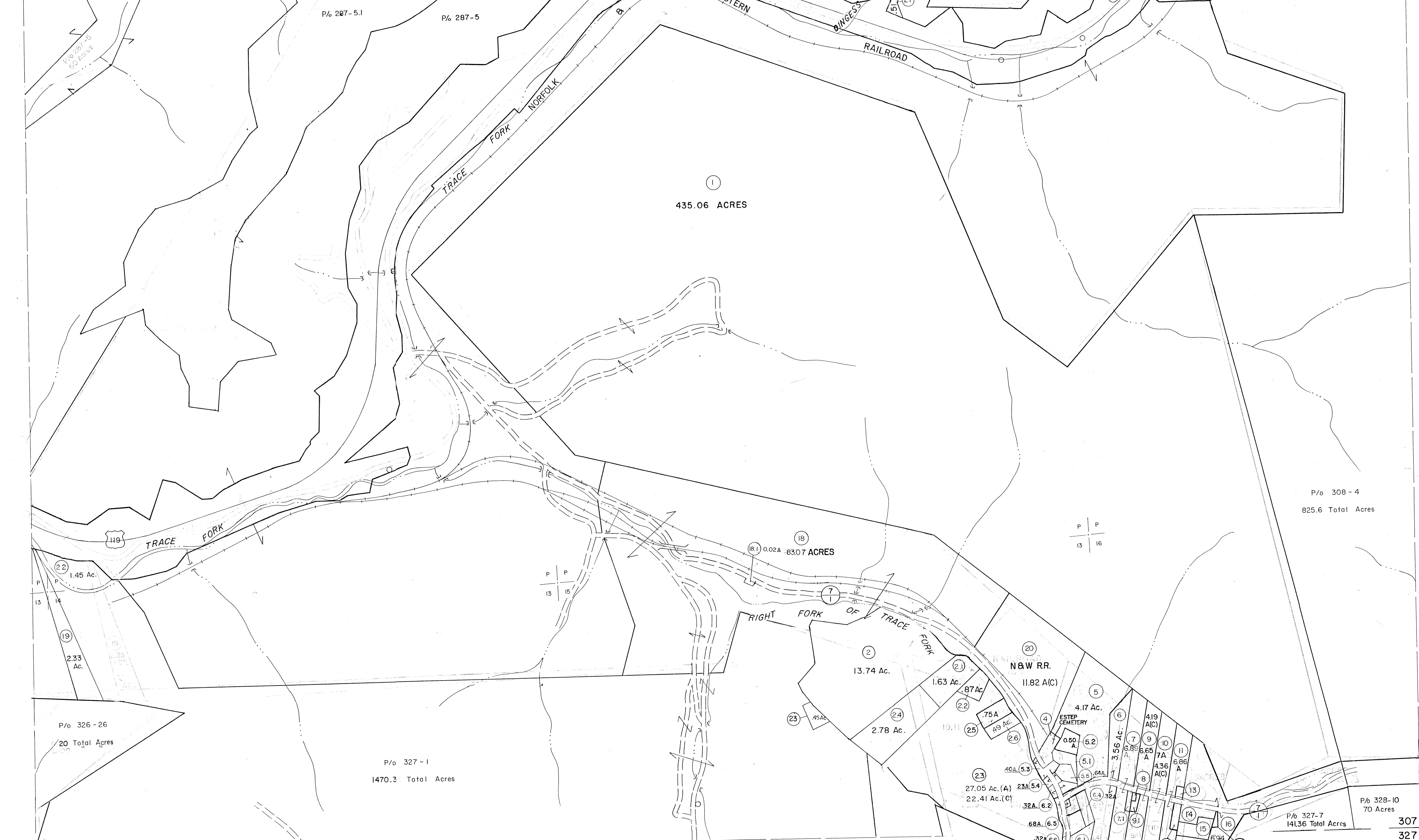


286 287
306 307

287 288
307 308



306 307
326 327

307 308
327 328

- (71) 13' x 150'
- (4) 180' x 130'
- (8) 150' x 80'
- (11) C-2 ACRES D-6.86ACRES
- (12) 157' x 100'
- (13) 150' x 100'
- (14) 1 ACRE .66 ACRES(C)
- (15) 1 ACRE .82 ACRES(C)

For Tax Purposes Only

Prepared by
MICHAEL BAKER, JR., INC.
Consulting Engineers
Rochester, Pennsylvania

Legend	
Property line	Original lot line
Edge of pavement or roadway	Dead lot number
Corporation line	Parcel or index number
District line	Improvement
County line	Railroad

Revisions			
1	9-15-68	9	5-28 A.M.
2	10-1-68	10	4-05 P.M.
3	9-25-74	11	10-07 A.M.
4	3-31-84	12	
5	9-23-86	13	PENTREE
6	Revised to 2-15-89	14	
7	Revised to 1-1-90	15	
8	4-10-93 A.M.	16	

KEY MAP	
287	307
306	308
327	328

MINGO COUNTY
STATE OF WEST VIRGINIA
Office of Assessor

DISTRICT **HARDEE**

SHEET NO: 307

Date, Aerial Photography: April 1, 1961 Date, Map: July, 1962
Photo No: Scale: 1" = 400'