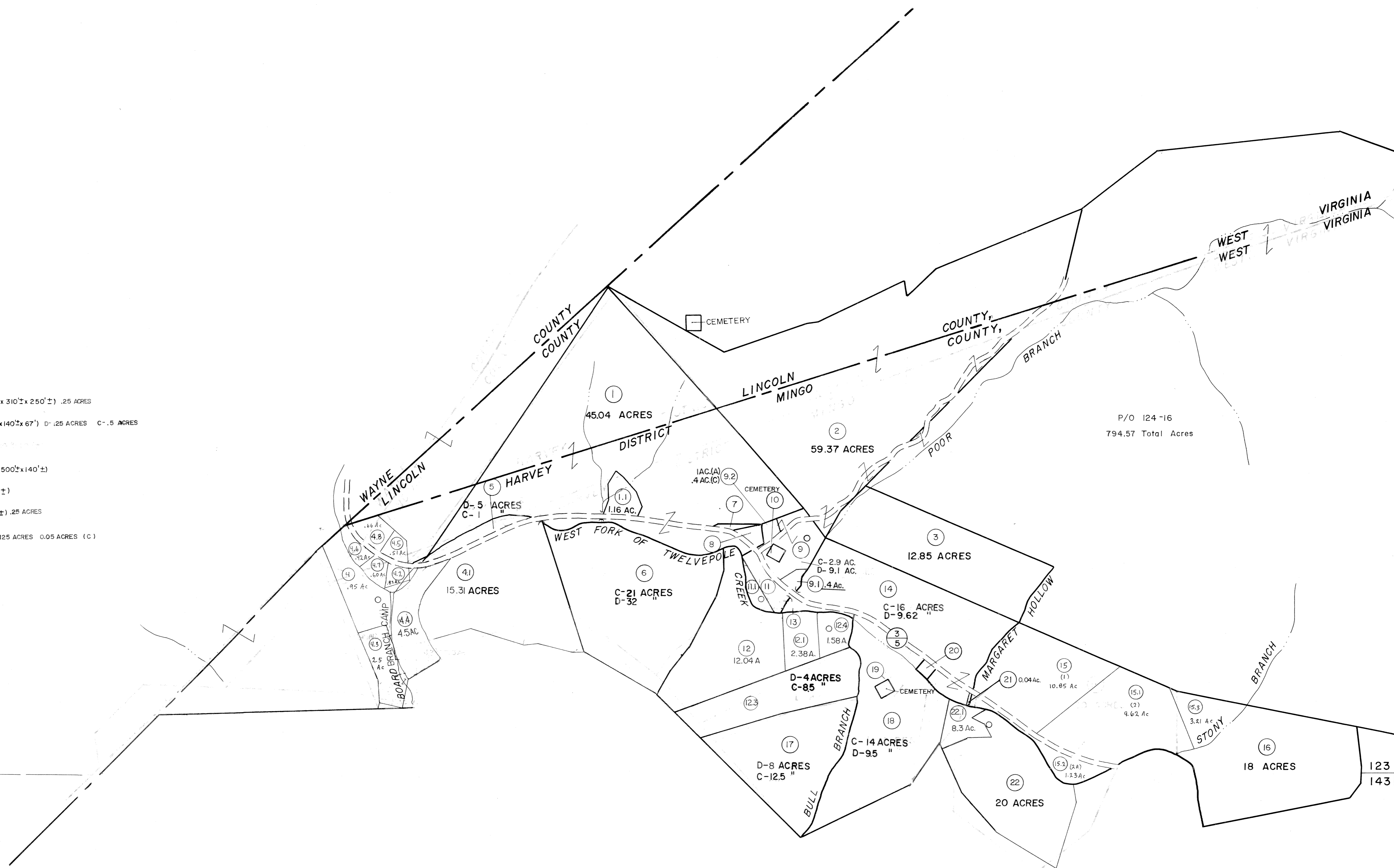


- 11 15 ACRES
- 111 (500'x460')
- 7 (120'± x 72'± x 310'± x 250'±) .25 ACRES
- 8 (250'± x 250'± x 140'± x 67'±) D-.125 ACRES C-.5 ACRES
- 10 (110'± x 100'±)
- 13 (430'± x 50'± x 500'± x 140'±)
- 19 (100'± x 100'±)
- 20 (110'± x 100'±) .25 ACRES
- 21 (27' x 75') .125 ACRES 0.05 ACRES (C)



For Tax Purposes Only

Prepared by
MICHAEL BAKER, JR., INC.
Consulting Engineers
Rochester, Pennsylvania

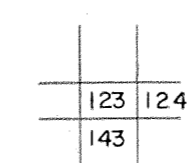
Legend

Property line	—————	Original lot line	-----
Edge of pavement or roadway	=====	Deed lot number	(15)
Corporation line	-----	Parcel or index number	(29)
District line	-----	Improvement	O
County line	-----	Railroad	+++++

Revisions

1	9-15-63	9	5-18	AM	17
2	10-1-63	10	8-01	ANM	18
3	3-31-64	11	3-05	BPM	19
4	2-1-64	12			20
5	9-20-86 PENTREE	13			21
6	6-1-87 L.E.S.	14			22
7	Revised Co. 1-1-90 REB	15			23
8	12-26 AM	16			24

KEY MAP



MINGO COUNTY
STATE OF WEST VIRGINIA
Office of Assessor

DISTRICT

HARVEY

SHEET NO: 123

Date, Aerial Photography: April, 1961 Date, Map: July, 1962
Photo No: Scale: 1" = 400'