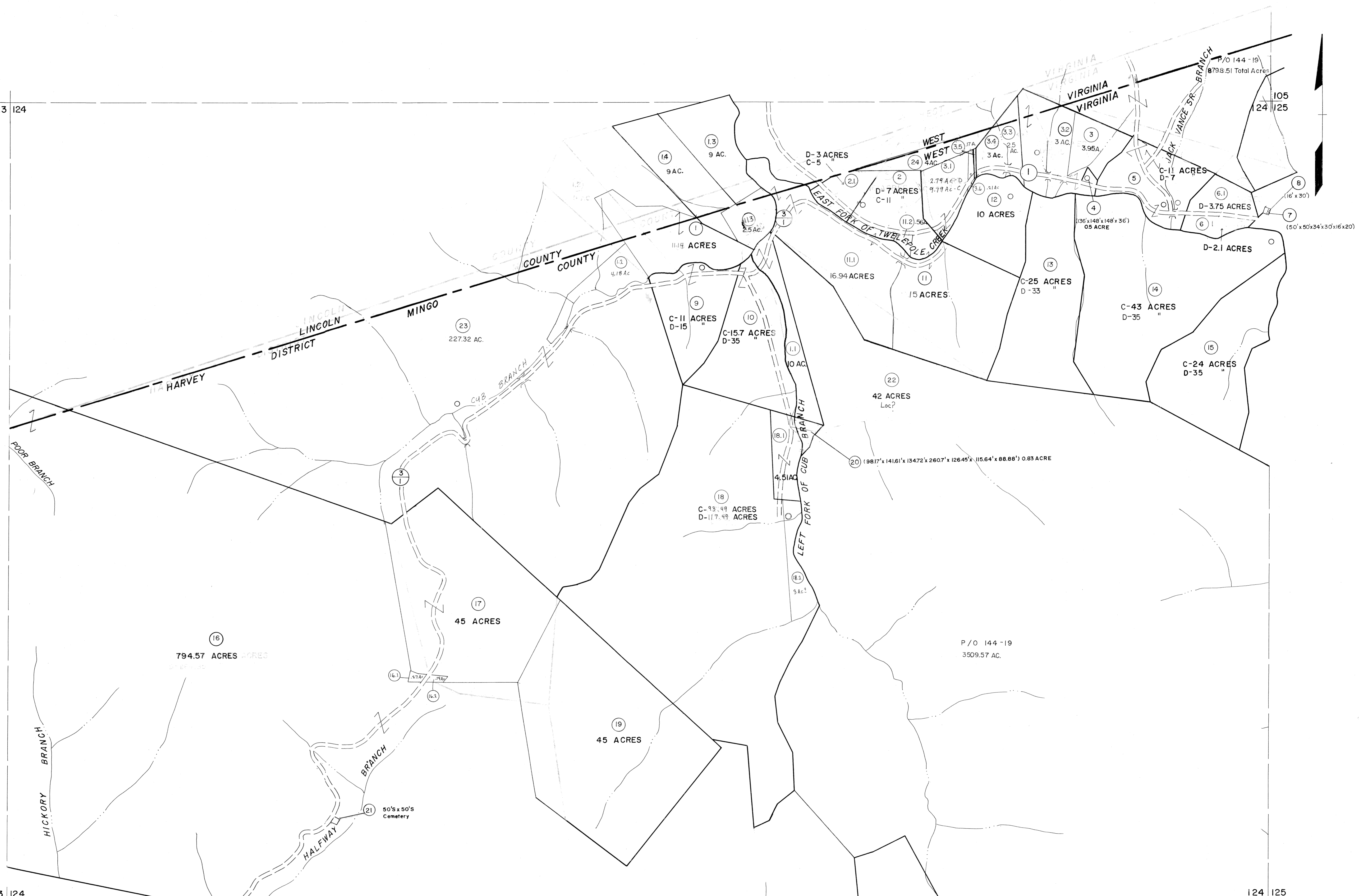


123 124

123 124
143 144

124 125
144 145



For Tax Purposes Only

Prepared by
MICHAEL BAKER, JR., INC.
Consulting Engineers
Rochester, Pennsylvania

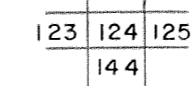
Legend

Property line	—	Original lot line	---
Edge of pavement or roadway	—	Deed lot number	(15)
Corporation line	---	Parcel or index number	(29)
District line	---	Improvement	o
County line	---	Railroad	—+—

Revisions

1	9-15-68	9	7-9-92 AM.	17	
2	10-1-68	10	12-96 AM.	18	
3	3-31-84	11	5-98 AM.	19	
4	2-1-84	12	8-01 AM.	20	
5	9-3-86 PENTREE	13	2/05 BRW	21	
6	6-1-87 L.E.S.	14		22	
7	REV. TO 2-15-89 NCS	15		23	
8	Revised to 1-1-90 R.E.B.	16		24	

KEY MAP



MINGO COUNTY
STATE OF WEST VIRGINIA
Office of Assessor

DISTRICT

HARVEY

SHEET NO: 124

Date, Aerial Photography: April, 1961 Date, Map: July, 1962
Photo No: Scale: 1" = 400'