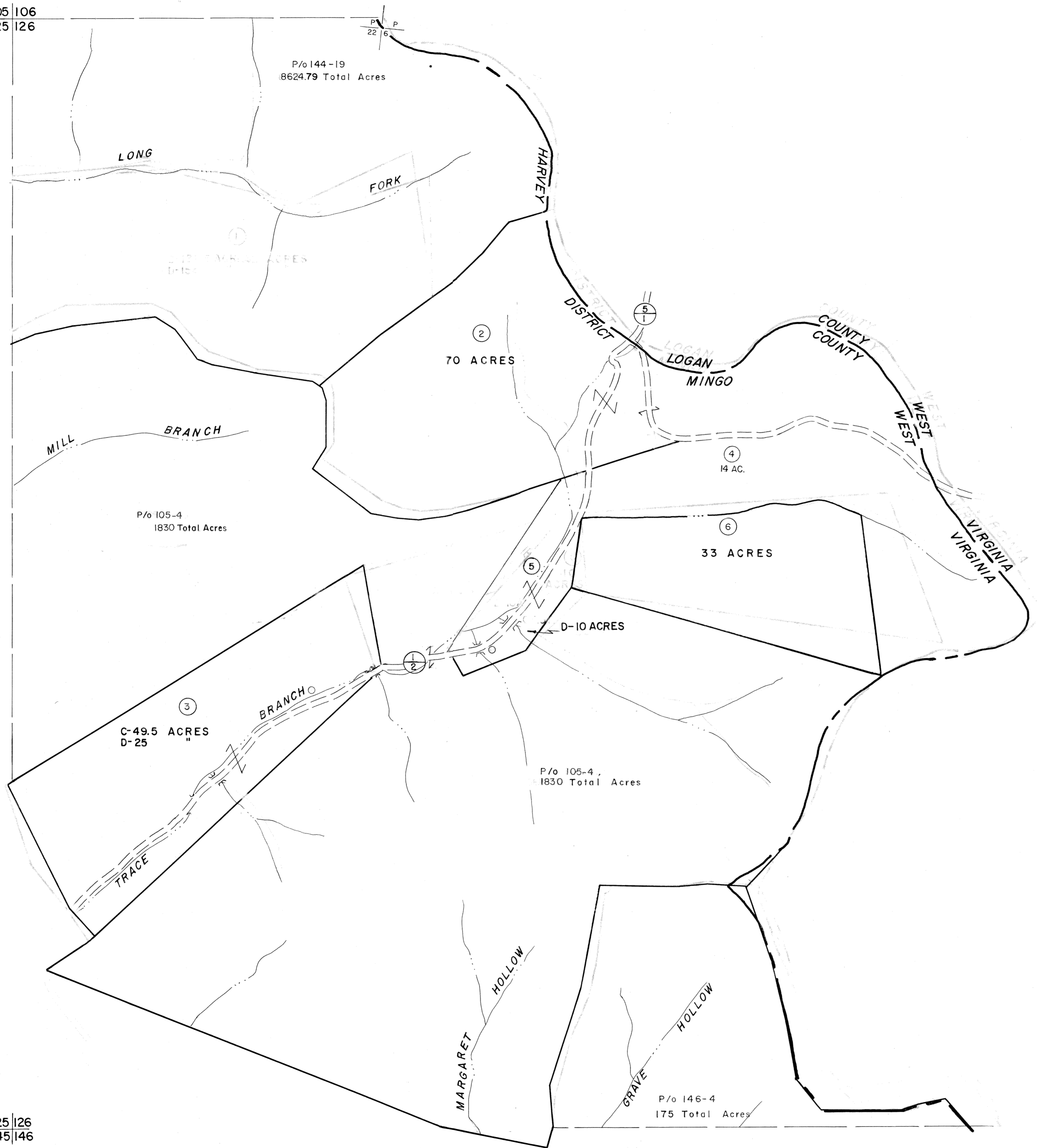


105 | 106  
125 | 126

106 |  
126 |



125 | 126  
145 | 146

126 |  
146 |

**For Tax Purposes Only**

Prepared by  
**MICHAEL BAKER, JR., INC.**  
Consulting Engineers  
Rochester, Pennsylvania

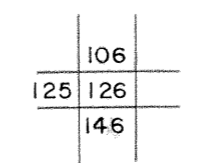
**Legend**

Property line	—	Original lot line	—
Edge of pavement or roadway	—	Deed lot number	(15)
Corporation line	—	Parcel or index number	(22)
District line	—	Improvement	o
County line	—	Railroad	—

**Revisions**

1	9-15-63	9	17
2	3-31-64	10	18
3	7-1-64	11	19
4	9-3-66 PENTREE	12	20
5	12-9-66 A.M.	13	21
6	1-20-66	14	22
7		15	23
8		16	24

**KEY MAP**



**MINGO COUNTY**  
STATE OF WEST VIRGINIA  
Office of Assessor

**DISTRICT**

**HARVEY**

**SHEET NO: 126**

Date, Aerial Photography: April, 1961    Date, Map: July, 1962  
Photo No:    Scale: 1" = 400'