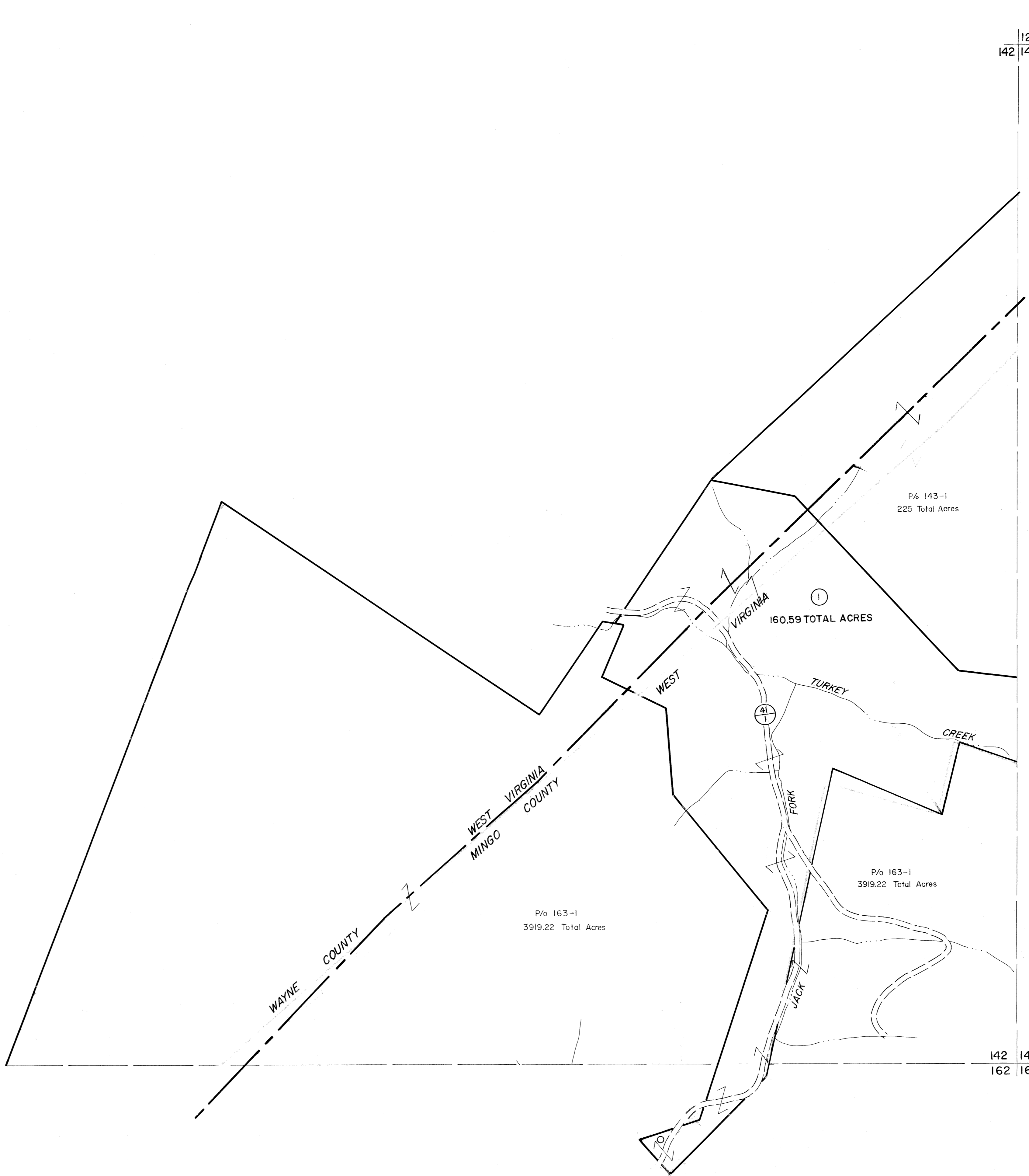


142  
143

142 143  
162 163



142  
162

142 143  
162 163

**For Tax Purposes Only**

Prepared by  
**MICHAEL BAKER, JR., INC.**  
Consulting Engineers  
Rochester, Pennsylvania

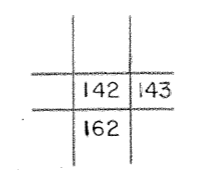
**Legend**

Property line	—————	Original lot line	-----
Edge of pavement or roadway	———	Deed lot number	(15)
Corporation line	-----	Parcel or index number	(29)
District line	-----	Improvement	o
County line	-----	Railroad	+

**Revisions**

1	3-31-54	9	17
2	7-1-54	10	18
3	8-20-56 PENTREE	11	19
4		12	20
5		13	21
6		14	22
7		15	23
8		16	24

**KEY MAP**



**MINGO COUNTY**  
STATE OF WEST VIRGINIA  
Office of Assessor

**DISTRICT**

**HARVEY**

**SHEET NO: 142**

Date, Aerial Photography: April, 1961 Date, Map: July, 1962  
Photo No: Scale: 1"= 400'