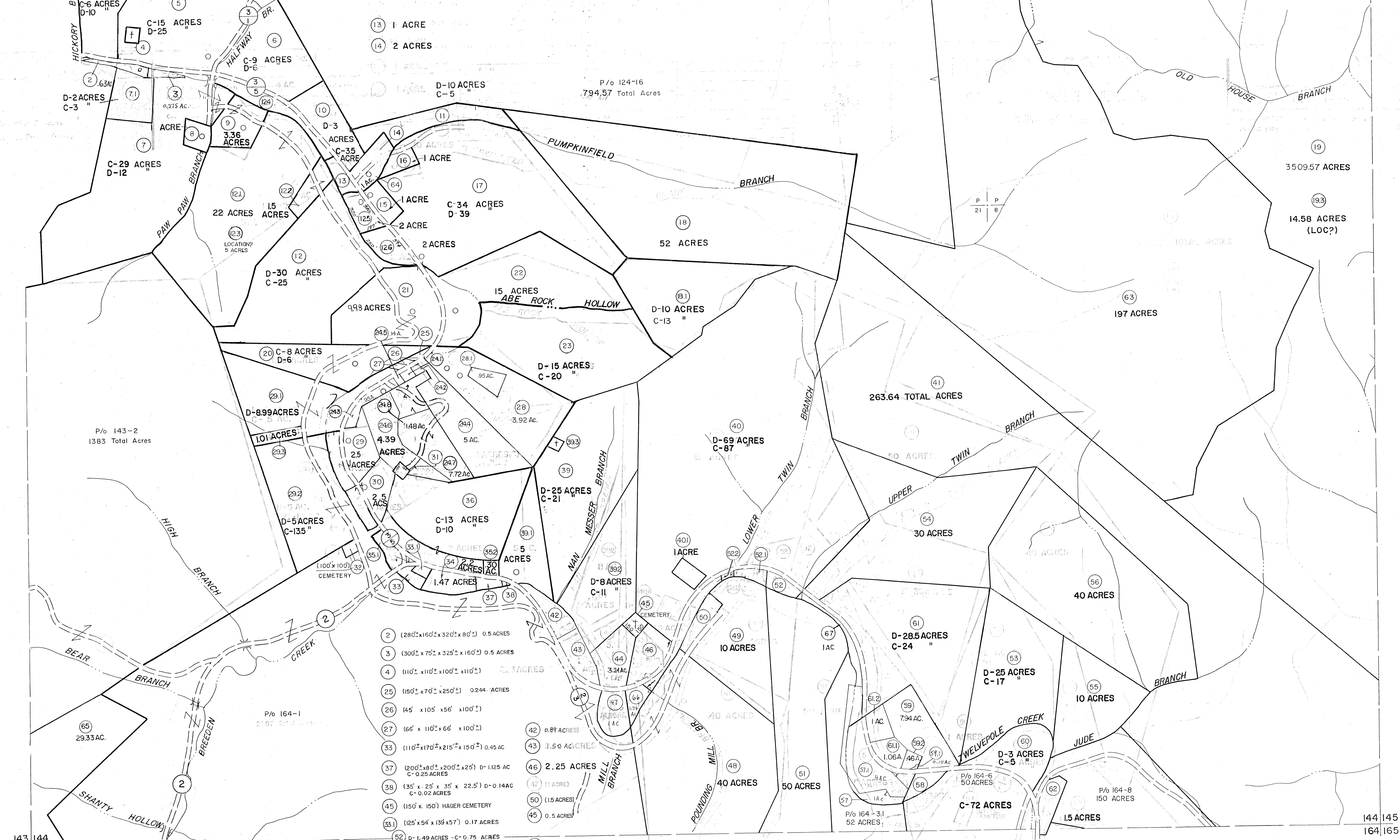


123|124  
143|144

124|125  
144|145



143|144  
163|164

144|145  
164|165

For Tax Purposes Only  
 Prepared by  
**MICHAEL BAKER, JR., INC.**  
 Consulting Engineers

Legend	
Property line	Original lot line
Edge of pavement or roadway	Deed lot number
Corporation line	Parcel or index number
District line	Improvement
County line	Railroad

Revisions	
1	9-15-69
2	10-1-69
3	9-11-74 J.C.
4	3-31-84
5	9-1-86 PENTREE
6	REV. TO 2-15-89 NCS
7	Revised to 1-1-90 RCB
8	7-22-90
9	10-30-93 A.M.
10	12-7-96 A.M.
11	5-78 A.M.
12	1-00 A.M.
13	8-01 A.M.
14	7-05 B.A.M.
15	6-27 B.A.M.
16	
17	
18	
19	
20	
21	
22	
23	
24	

KEY MAP	
124	
143 144 145	
164	

**MINGO COUNTY**  
 STATE OF WEST VIRGINIA  
 Office of Assessor

DISTRICT **HARVEY**  
**SHEET NO: 144**  
 Date, Aerial Photography: April, 1961 Date, Map: July, 1962  
 Photo No: Scale: 1" = 400'