

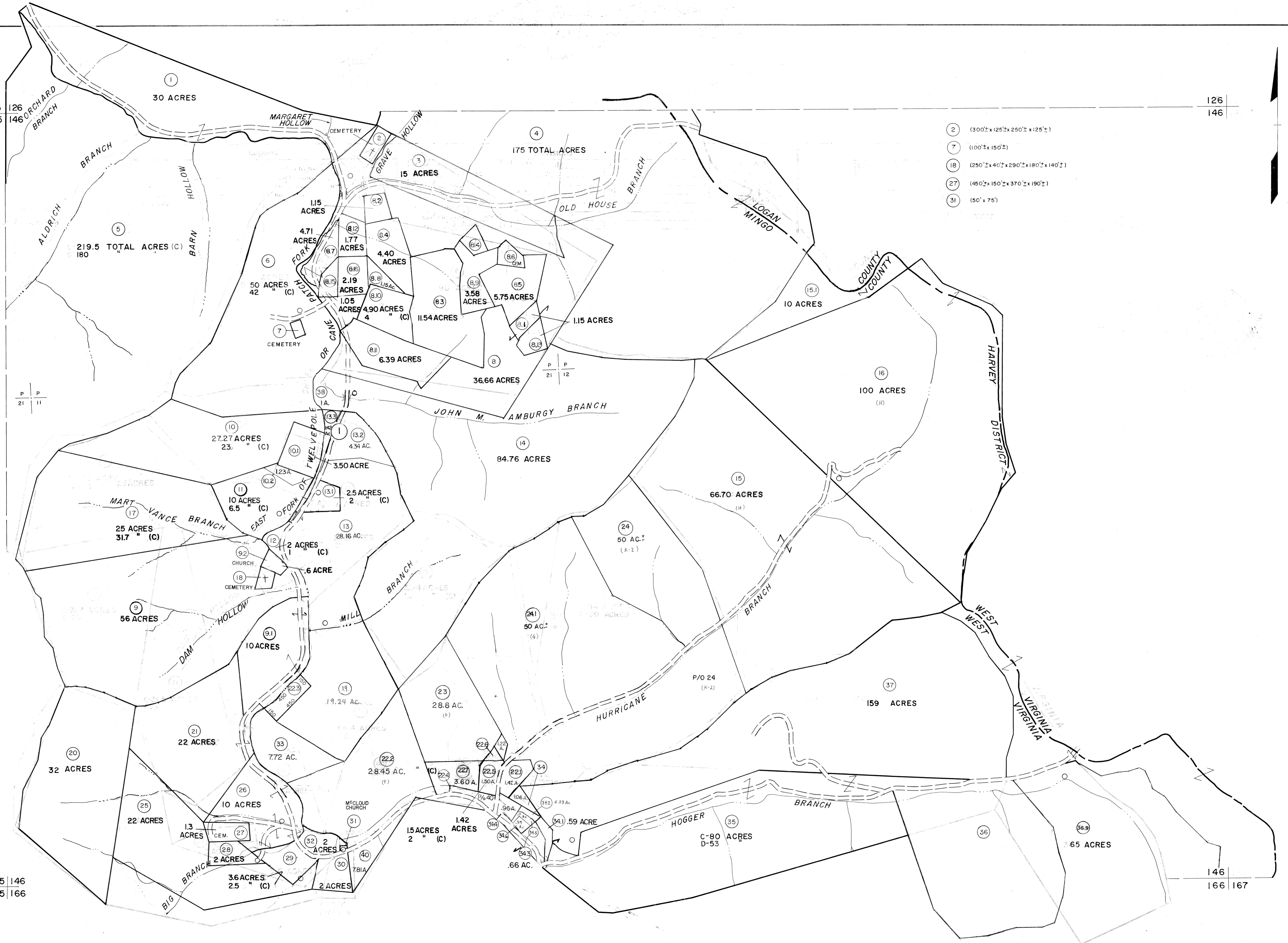
125 | 126  
145 | 146

126 |  
146

145 | 146  
165 | 166

146 |  
166 | 167

- 2 (300' x 125' x 250' x 125')
- 7 (100' x 150')
- 18 (250' x 40' x 290' x 180' x 140')
- 27 (450' x 150' x 370' x 190')
- 31 (50' x 75')



For Tax Purposes Only

Prepared by  
MICHAEL BAKER, JR., INC.  
Consulting Engineers  
Rochester, Pennsylvania

Legend	
Property line	Original lot line
Edge of pavement or roadway	Deed lot number
Corporation line	Parcel or index number
District line	Improvement
County line	Railroad

Revisions	
1 9-15-68	9 9-27-93 A.M.
2 9-17-74 J.C.	10 12-96 A.M.
3 3-31-84	11 5-98 A.M.
4 9-1-86 PENTREE	12 2/05 Ban
5 6-1-87 L.E.S.	13
6 REV. TO 2-15-89 NCS	14
7 Revised to 1-1-90 REB	15
8 7-9-92 A.M.	16

KEY MAP  
126 | 146 | 147  
145 | 146 | 147  
166

MINGO COUNTY  
STATE OF WEST VIRGINIA  
Office of Assessor

DISTRICT HARVEY  
SHEET NO: 146  
Date, Aerial Photography: April, 1961 Date, Map: July, 1962  
Photo No: Scale: 1" = 400'