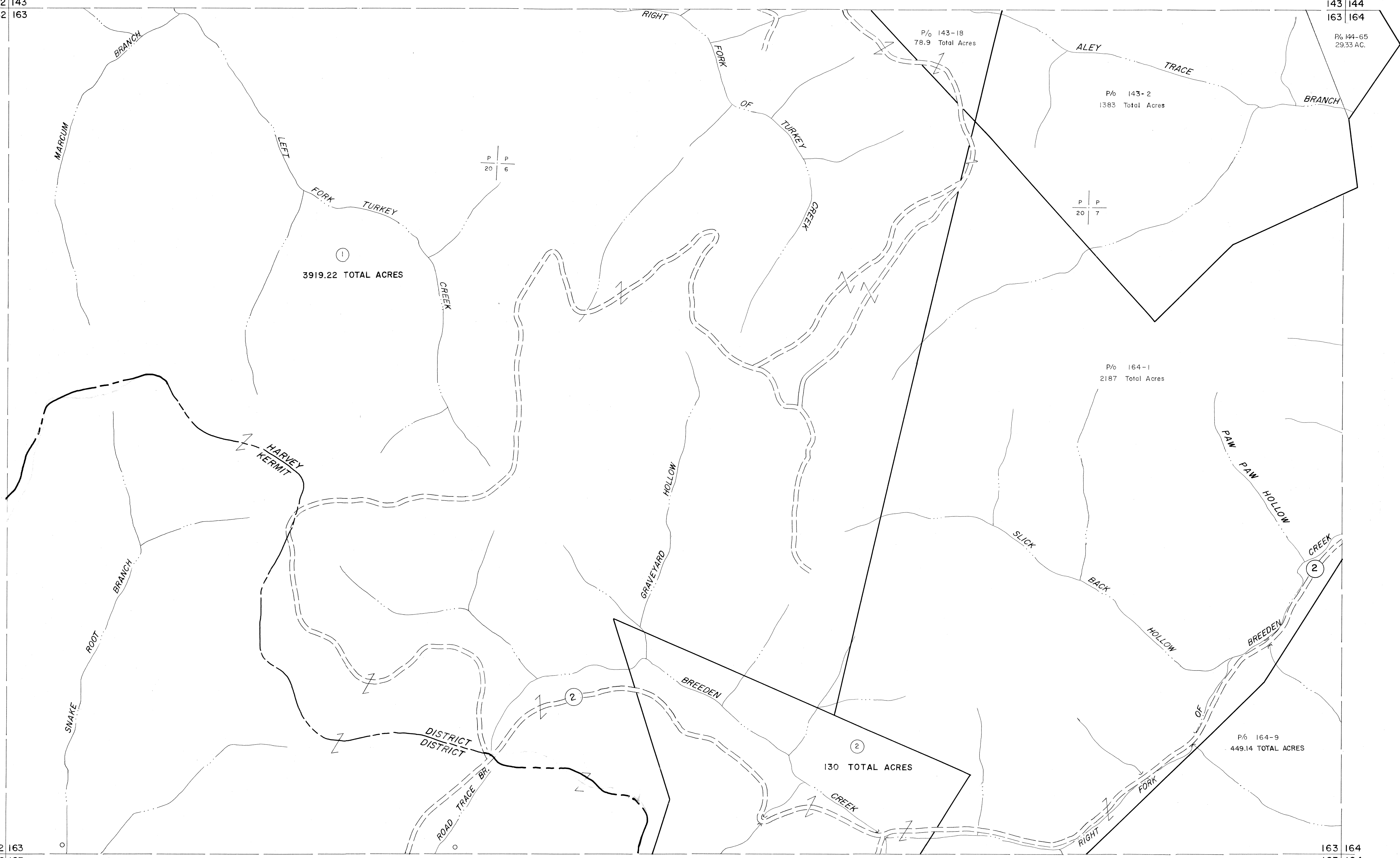


142 | 143
162 | 163

143 | 144
163 | 164

162 | 163
182 | 183

163 | 164
183 | 184



For Tax Purposes Only

Prepared by
MICHAEL BAKER, JR., INC.
Consulting Engineers
Rochester, Pennsylvania

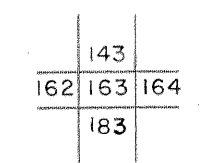
Legend

Property line	—	Original lot line	- - - - -
Edge of pavement or roadway	—	Deed lot number	(15)
Corporation line	—	Parcel or index number	(22)
District line	- - - - -	Improvement	○
County line	- - - - -	Railroad	—+—

Revisions

1	3-31-84	9	17
2	7-1-85	10	18
3	12-30-86 Pentacre	11	19
4	12-30-86 Azu	12	20
5		13	21
6		14	22
7		15	23
8		16	24

KEY MAP



MINGO COUNTY
STATE OF WEST VIRGINIA
Office of Assessor

DISTRICT KERMIT HARVEY

SHEET NO: 163

Date, Aerial Photography: April, 1961 Date, Map: July, 1962
Photo No: Scale: 1" = 400'