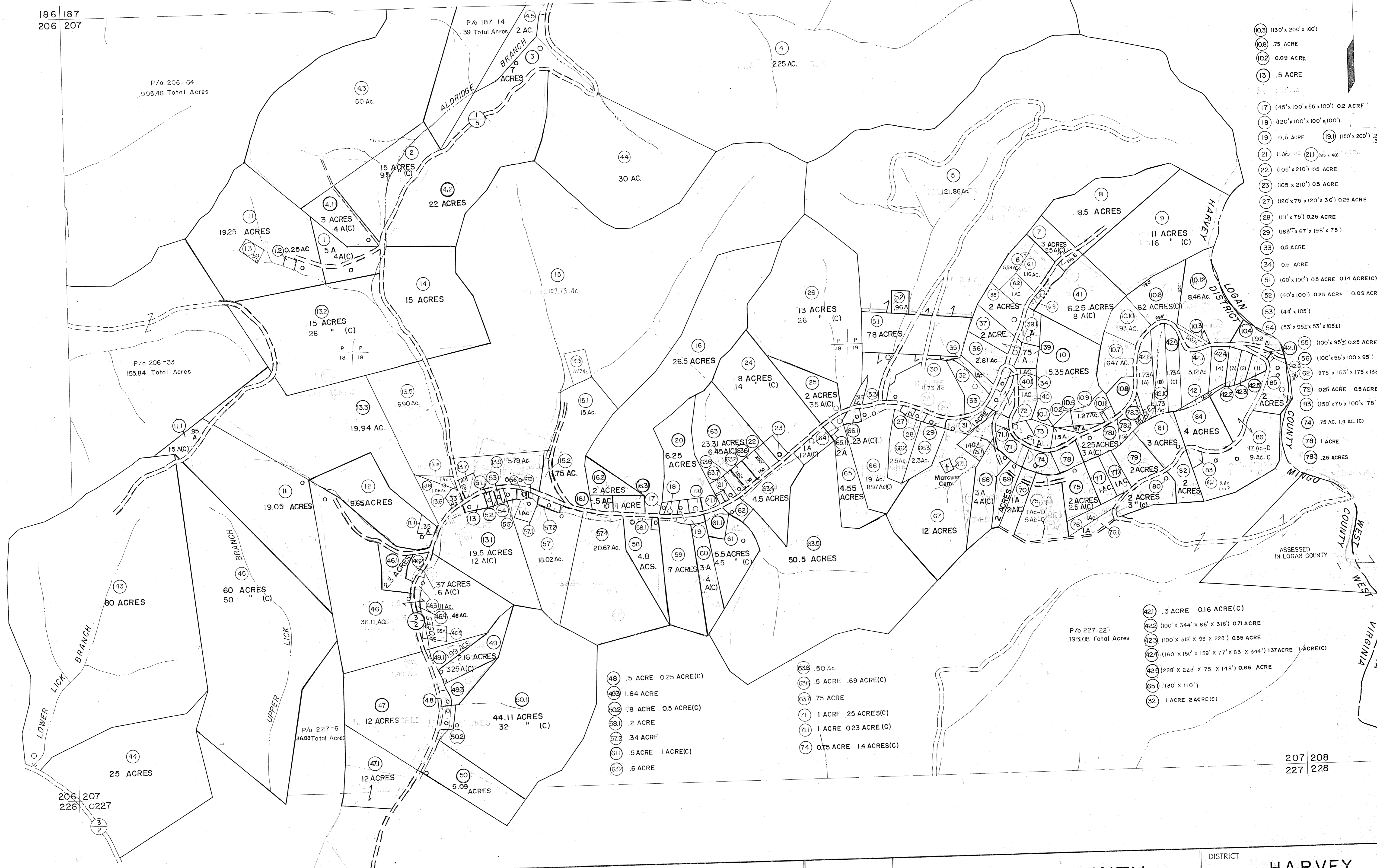


- (103) (130' x 200' x 100')
- (106) .75 ACRE
- (102) 0.09 ACRE
- (13) .5 ACRE
- (17) (45' x 100' x 55' x 100') 0.2 ACRE
- (18) (120' x 100' x 100' x 100')
- (19) 0.5 ACRE (19) (150' x 200') .25 ACRE .34 (C)
- (21) (110' x 210')
- (21) (85' x 40')
- (22) (105' x 210') 0.5 ACRE
- (23) (105' x 210') 0.5 ACRE
- (27) (120' x 75' x 120' x 36') 0.25 ACRE
- (28) (11' x 75') 0.25 ACRE
- (29) (83' x 67' x 198' x 75')
- (33) 0.5 ACRE
- (34) 0.5 ACRE
- (51) (60' x 100') 0.5 ACRE 0.14 ACRE(C)
- (52) (40' x 100') 0.25 ACRE 0.09 ACRE(C)
- (53) (44' x 105')
- (54) (53' x 95' x 53' x 105')
- (55) (100' x 95' x 53' x 105')
- (56) (100' x 55' x 100' x 95')
- (62) (75' x 153' x 175' x 135' x 85') 1 ACRE
- (72) 0.25 ACRE 0.5 ACRE(C)
- (83) (150' x 75' x 100' x 175')
- (74) .75 AC. 1.4 AC. (C)
- (78) 1 ACRE
- (79) .25 ACRES
- (421) .3 ACRE 0.16 ACRE(C)
- (422) (100' x 344' x 86' x 318') 0.71 ACRE
- (423) (100' x 318' x 93' x 228') 0.55 ACRE
- (424) (160' x 150' x 159' x 77' x 83' x 344') 1.37 ACRE 1 ACRE(C)
- (425) (228' x 228' x 75' x 148') 0.66 ACRE
- (651) (80' x 110')
- (32) 1 ACRE 2 ACRE(C)



For Tax Purposes Only

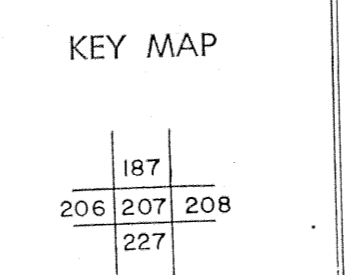
Prepared by  
**MICHAEL BAKER, JR., INC.**  
Consulting Engineers  
Pottsville, Pennsylvania

**Legend**

Property line	—	Original lot line	—
Edge of pavement or roadway	—	Dead lot number	(15)
Corporation line	—	Parcel or index number	(99)
Improvement	—	Railroad	—
District line	—		
County line	—		

**Revisions**

1	9-15-63	9	Revised to 11-90	17	8-07 AM
2	10-1-63	10	1-12-93 AM	18	
3	11-1-63	11	9-27-93 AM	19	
4	9-12-14 Gunner JC	12	1-97 AM	20	
5	3-31-84	13	5-98 AM	21	
6	9-4-86 Pentree	14	1-00 AM	22	
7	6-1-87 L.E.S.	15	9-01 AM	23	
8	Revised to 2-15-89	16	3/05 B.M.	24	



**MINGO COUNTY**  
STATE OF WEST VIRGINIA  
Office of Assessor

DISTRICT  
**HARVEY**

**SHEET NO: 207**

Date, Aerial Photography: April, 1961 Date, Map: July, 1962  
Photo No: Scale: 1" = 400'