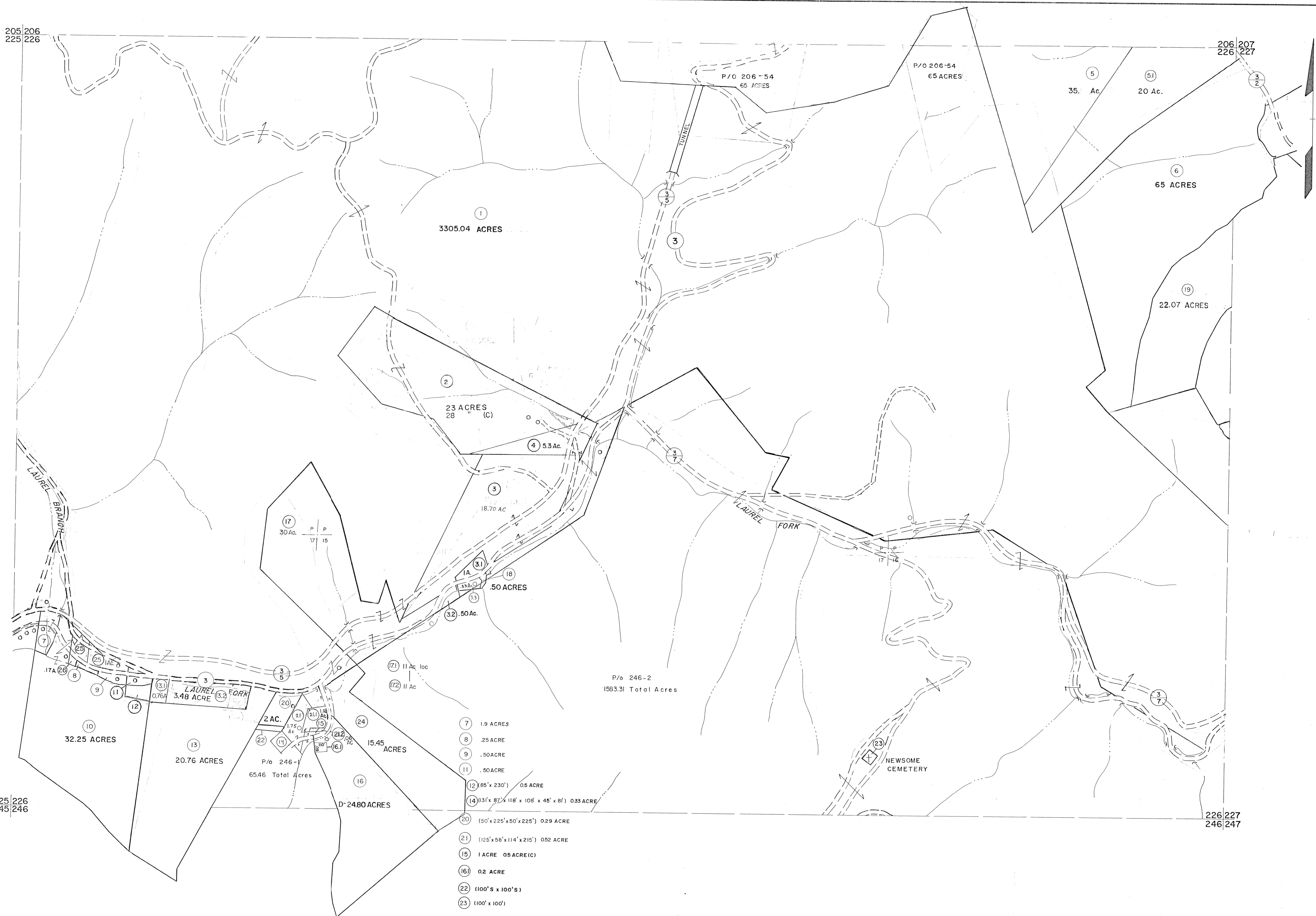


205|206
225|226

206|207
226|227

225|226
245|246

226|227
246|247



For Tax Purposes Only

Prepared by
MICHAEL BAKER, JR., INC.
Consulting Engineers
Rochester, Pennsylvania

Legend

Property line	—————	Original lot line	-----
Edge of pavement or roadway	-----	Deed lot number	(15)
Corporation line	-----	Parcel or index number	(29)
District line	-----	Improvement	O
County line	-----	Railroad	+++++

Revisions

1	9-15-68	9	5-18 A.M.	17	
2	10-1-69	10	1-22 A.M.	18	
3	9/23/74	11	3/05 8 AM	19	
4	3-31-84	12	6/01 8 AM	20	
5	9-2-86	13	PENTREE	21	
6	Revised to 2-15-89	14		22	
7	Revised to 1-1-90	15		23	
8	9-27-93 A.M.	16		24	

KEY MAP

206
225 226 227
246

MINGO COUNTY

STATE OF WEST VIRGINIA

Office of Assessor

DISTRICT

HARVEY

SHEET NO: 226

Date, Aerial Photography: April, 1961
Photo No: _____
Date, Map: July, 1962
Scale: 1" = 400'