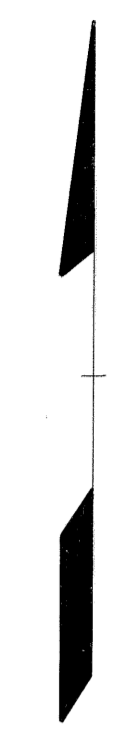
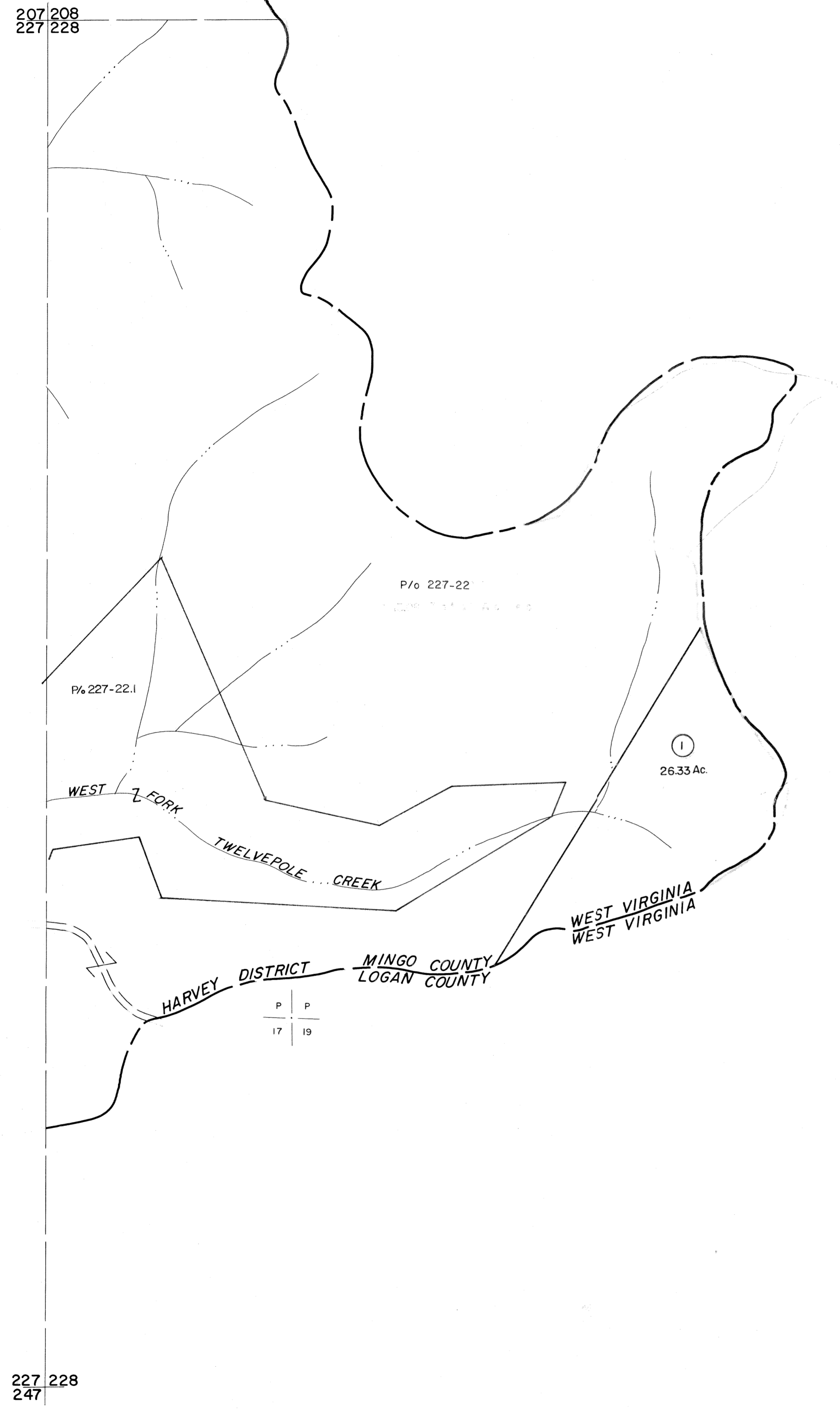


207 208
227 228

208
228



227 228
247

228

For Tax Purposes Only

Prepared by
MICHAEL BAKER, JR., INC.
Consulting Engineers
Rochester, Pennsylvania

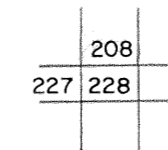
Legend

Property line	—————	Original lot line	-----
Edge of pavement or roadway	—————	Deed lot number	(15)
Corporation line	-----	Parcel or index number	(99)
District line	-----	Improvement	o
County line	-----	Railroad	—+—+—+—

Revisions

1	3-31-84	9		17	
2	7-1-84	10		18	
3	9-4-86 PENTREE	11		19	
4	1-27-87	12		20	
5	5-98 D.M.	13		21	
6	9-21-88	14		22	
7		15		23	
8		16		24	

KEY MAP



MINGO COUNTY
STATE OF WEST VIRGINIA
Office of Assessor

DISTRICT

HARVEY

SHEET NO: 228

Date, Aerial Photography: April, 1961 Date, Map: July, 1962
Photo No: Scale: 1" = 400'