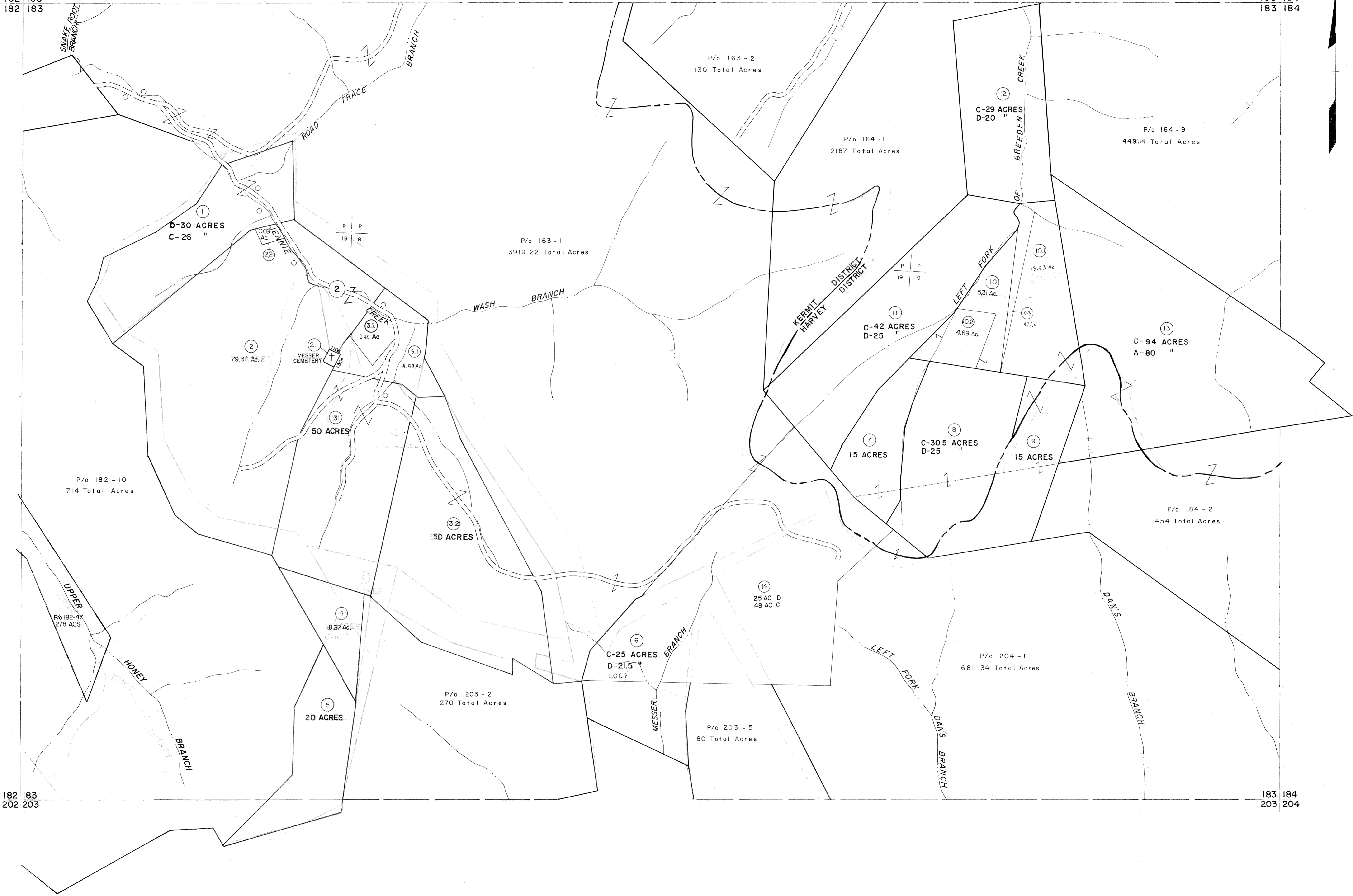


162 163
182 183

163 164
183 184

182 183
202 203

183 184
203 204



For Tax Purposes Only
 Prepared by
MICHAEL BAKER, JR., INC.
 Consulting Engineers
 Rochester, Pennsylvania

Legend	
Property line	—
Edge of pavement or roadway	—
Corporation line	—
District line	—
County line	—
Original lot line	—
Deed lot number	(15)
Parcel or index number	(99)
Improvement	o
Railroad	—

Revisions			
1	2-18-62	9	2/08 B.M.
2	10-1-63	10	
3	3-31-64	11	
4	7-1-64	12	
5	8-1-66	13	PENTREE
6	12-96	14	
7	5-98	15	A.H.
8	1-00	16	A.H.

KEY MAP

MINGO COUNTY
 STATE OF WEST VIRGINIA
 Office of Assessor

DISTRICT **HARVEY KERMIT**
SHEET NO: 183
 Date, Aerial Photography: April, 1961 Date, Map: July, 1962
 Photo No: Scale: 1" = 400'