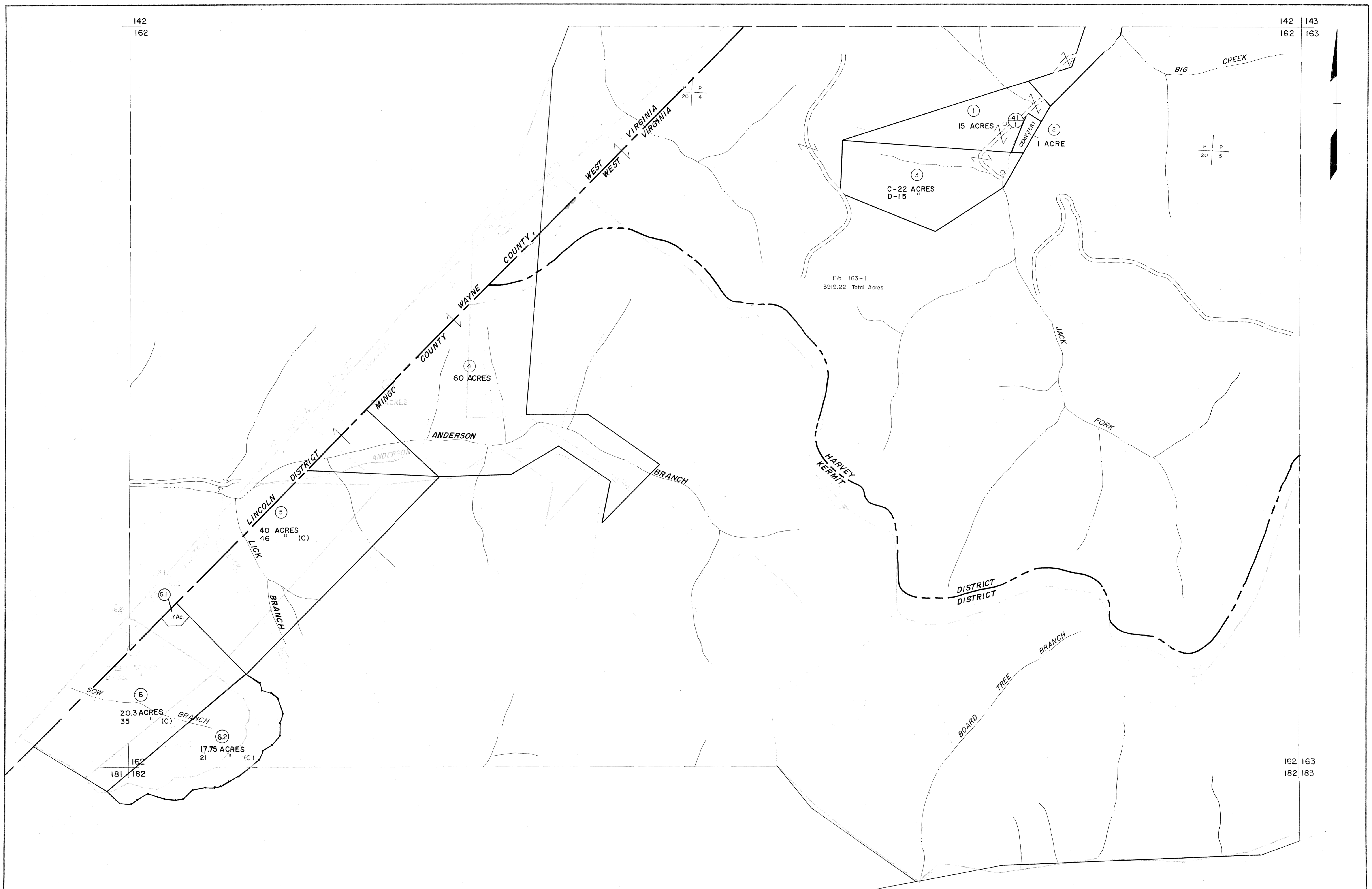


142
162

142 143
162 163



For Tax Purposes Only

Prepared by
MICHAEL BAKER, JR., INC.
Consulting Engineers
Rochester, Pennsylvania

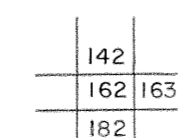
Legend

Property line	—————	Original lot line	-----
Edge of pavement or roadway	-----	Deed lot number	(15)
Corporation line	-----	Parcel or index number	(29)
District line	-----	Improvement	O
County line	-----	Railroad	—+—+—+—

Revisions

1	8-12-63	9		17
2	10-1-63	10		18
3	9/17/74	11	JC	19
4	3-31-84	12		20
5	7-1-84	13		21
6	8-1-86	14	PENTREE	22
7	5-98	15	A.M.	23
8		16		24

KEY MAP



MINGO COUNTY
STATE OF WEST VIRGINIA
Office of Assessor

DISTRICT **KERMIT HARVEY**

SHEET NO: 162

Date, Aerial Photography: April, 1961 Date, Map: July, 1962
Photo No: Scale: 1" = 400'