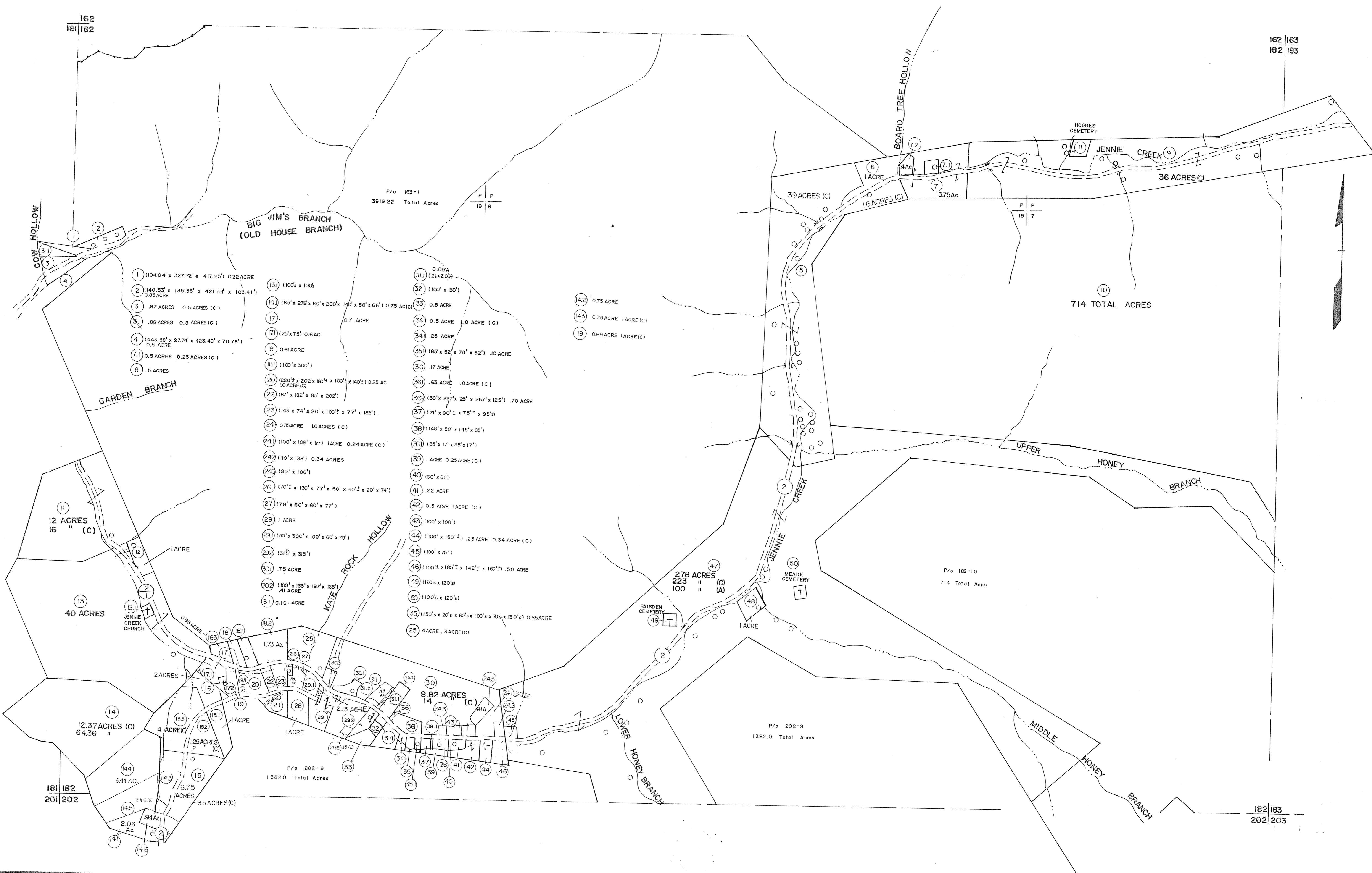


162
181 182

162 163
182 183



For Tax Purposes Only

Prepared by
PENTREE, INC
1428 MAIN STREET
PRINCETON, WEST VIRGINIA

LEGEND	
Property line	—
Edge of pavement or roadway	— — — —
Corporation line	— · — · —
District line	— · — · —
County line	— · — · —
State line	— · — · —
Lead hook	— · — · —
Water	~ ~ ~ ~

REVISIONS	
Original lot line	(15)
Deed lot number	(15)
Parcel or index number	(15)
Improvement	(15)
Railroad	(15)
Scaled dimension	(S)
Deed dimension	(D)
Calculated area	(C)

RESTRICTION	
12-23-94 Parcel	
6-1-87 L.E.S.	
7-9-92 AM	
11-18-93 AM	
1-01-AM	
7-01-AM	
2/05 BRK	
6/07 BRK	

KEY MAP	
162	182
181 182 183	202

All tax maps created under the provisions of reappraisal legislation are the property of the State of West Virginia and the reproduction, copying, distribution or sale of such tax maps or any copies thereof without the written permission of the State Tax Commissioner is prohibited by law.

MINGO COUNTY
STATE OF WEST VIRGINIA
Office of Assessor

DISTRICT
KERMIT

SHEET NO. 182

Date, Aerial Photography: April, 1961
Photo No:

Date, Map: July, 1962
Scale: 1" = 400'