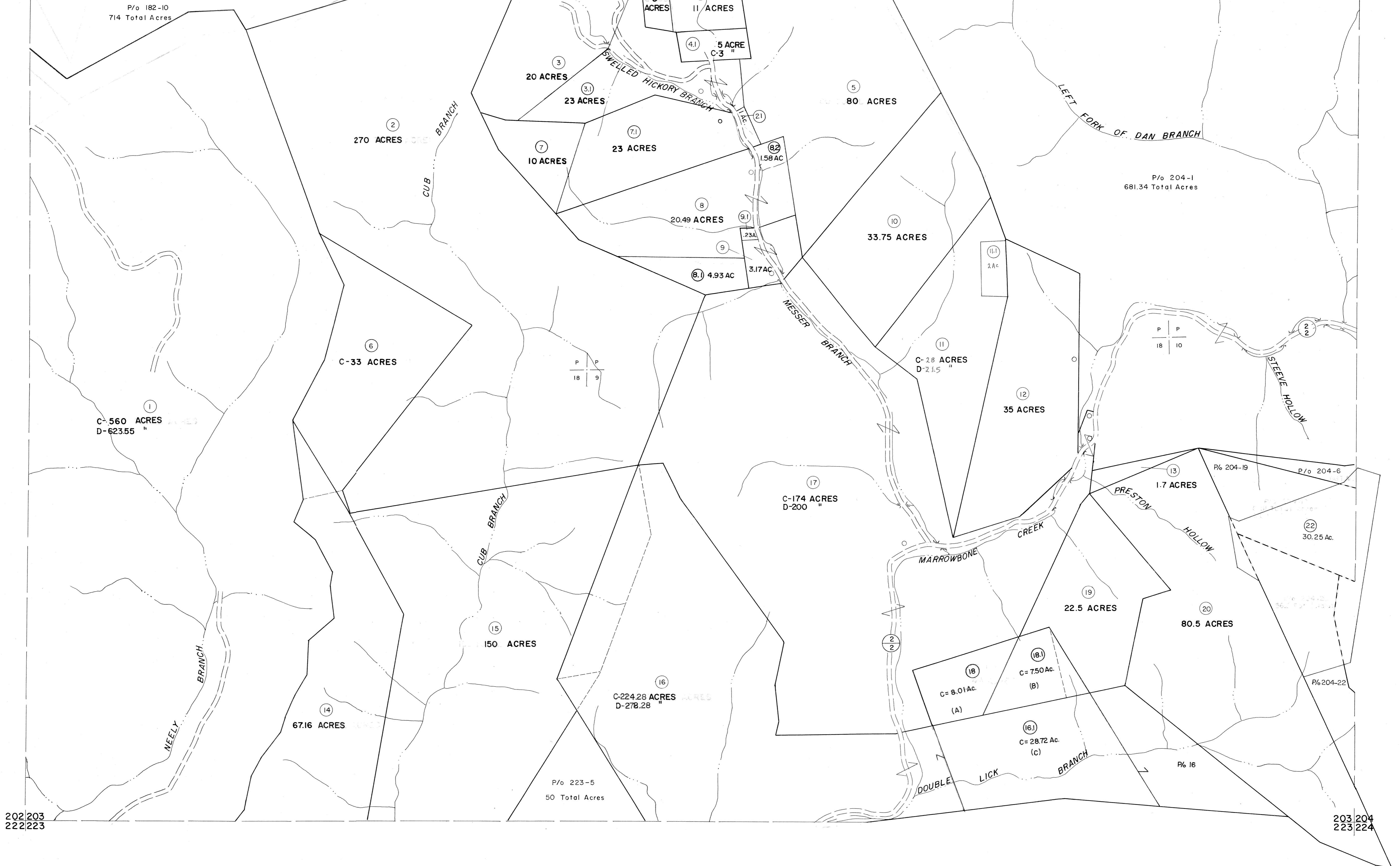


182 183  
202 203

183 184  
203 204



For Tax Purposes Only

Prepared by  
MICHAEL BAKER, JR., INC.  
Consulting Engineers  
Rochester, Pennsylvania

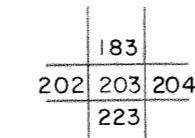
Legend

Property line	—————	Original lot line	-----
Edge of pavement or roadway	-----	Deed lot number	(15)
Corporation line	-----	Parcel or index number	(22)
District line	-----	Improvement	O
County line	-----	Railroad	+

Revisions

1	9-15-62	9	1-20-64	17	
2	9-19-64	10	9-01-64	18	
3	3-31-64	11	3/05-64	19	
4	7-1-64	12		20	
5	8-20-66	13		21	
6	Revised to 2-15-69	14		22	
7	1-27-64	15		23	
8	5-9-68	16		24	

KEY MAP



MINGO COUNTY  
STATE OF WEST VIRGINIA  
Office of Assessor

DISTRICT

KERMIT

SHEET NO:203

Date, Aerial Photography: April, 1961 Date, Map: July, 1962  
Photo No: Scale: 1" = 400'