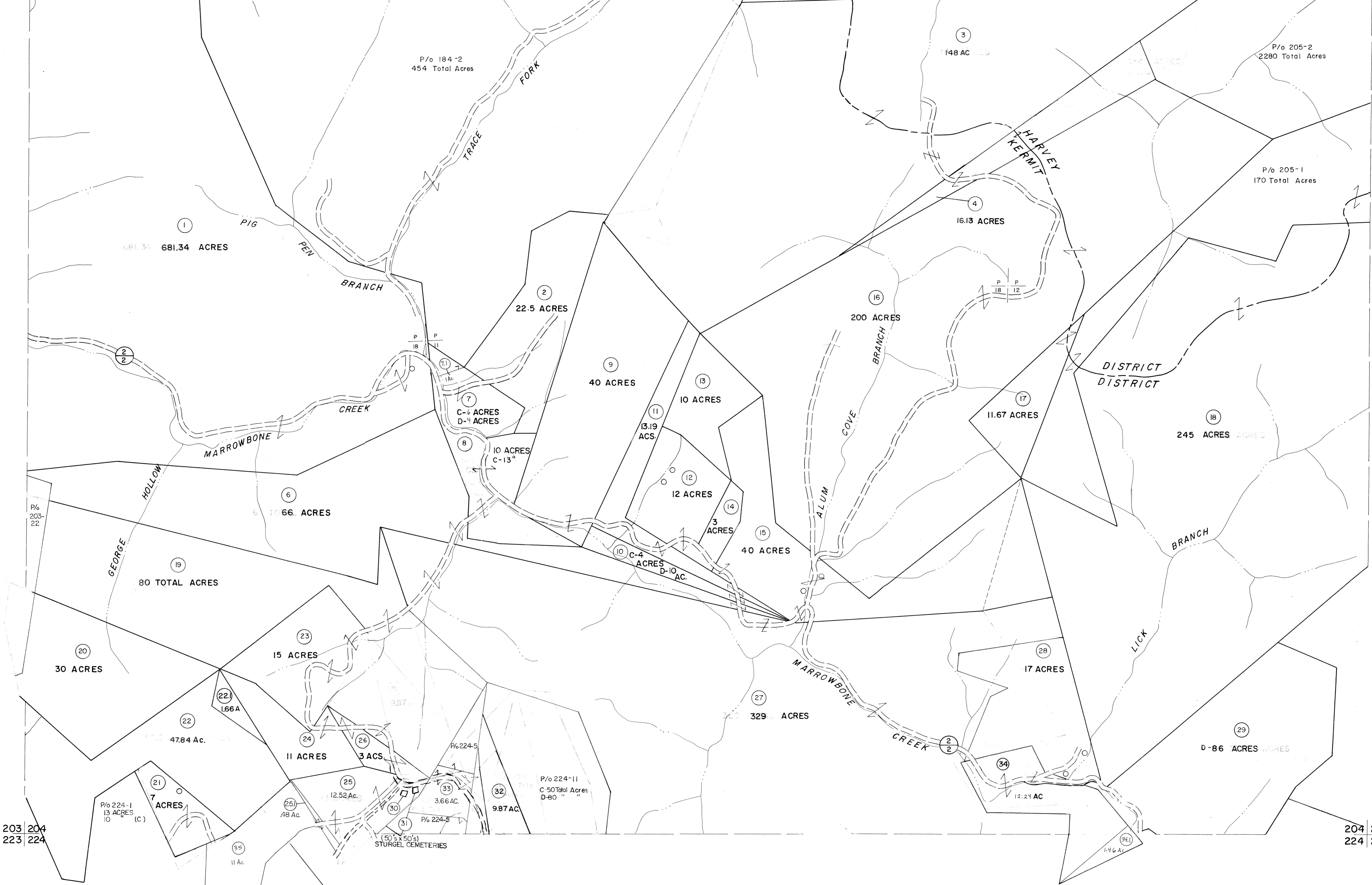


183 184  
203 204

184 185  
204 205



For Tax Purposes Only  
 Prepared by  
**MICHAEL BAKER, JR., INC.**  
 Consulting Engineers  
 Rochester, Pennsylvania

Legend	
Property line	—
Edge of pavement or roadway	—
Corporation line	—
District line	—
County line	—
Original lot line	—
Deed lot number	(15)
Parcel or index number	(29)
Improvement	o
Railroad	—

Revisions	
1	9-15-63
2	10-1-63
3	3-31-64
4	7-1-64
5	9-1-66 PENTREE
6	Revised to 2-15-69
7	2-4-73 AM
8	1-27-81
9	1-28 AM
10	9-01 ANM
11	3/05 3AM
12	
13	
14	
15	
16	
17	
18	
19	
20	
21	
22	
23	
24	

KEY MAP

**MINGO COUNTY**  
 STATE OF WEST VIRGINIA  
 Office of Assessor

DISTRICT  
**KERMIT**  
 SHEET NO: 204  
 Date, Aerial Photography: April, 1961 Date, Map July, 1962  
 Photo No. Scale: 1" = 400'