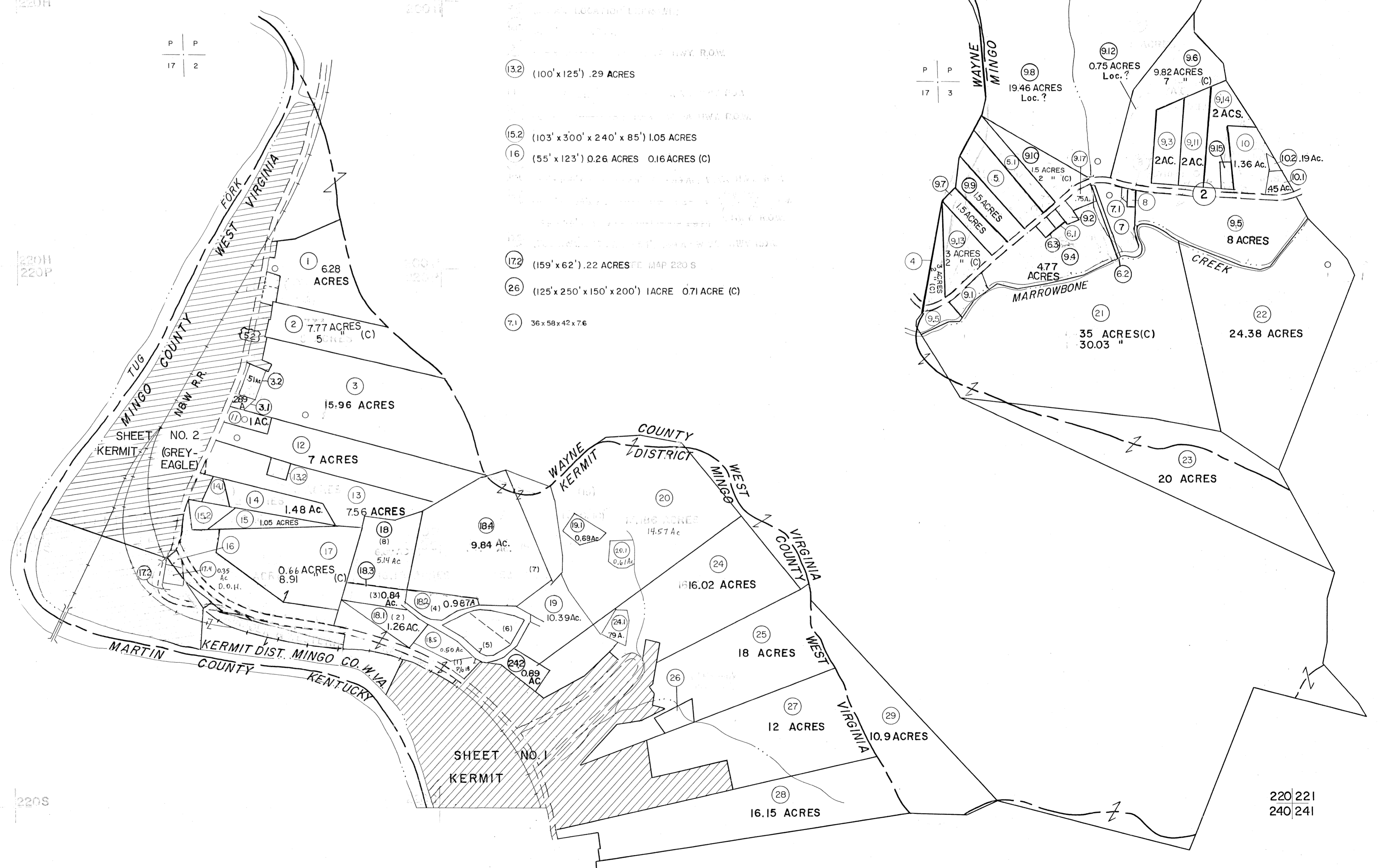


200
220

200 201
220 221



- 5 (170' x 500' x 170' x 600' s) 2.15 ACRES(C) 0.93 ACRES
- 51 (100' x 600' s x 100' x 700' s) 1.49 ACRES (C) 0.54 ACRES
- 6.1 (75' x 100') .17 ACRES
- 7 1.88 ACRES
- 8 (50' x 100') .11 ACRES
- 6.2 (45' x 289' x 195' x 45' x 195' x 289') 0.13 ACRES
- 6.3 (75' x 50' x 100' x 50' x 75' x 100') 0.23 ACRES
- 9.2 40 ACRES
- 13.2 (100' x 125') .29 ACRES
- 15.2 (103' x 300' x 240' x 85') 1.05 ACRES
- 16 (55' x 123') 0.26 ACRES 0.16 ACRES (C)
- 17.2 (159' x 62') .22 ACRES
- 26 (125' x 250' x 150' x 200') 1 ACRE 0.71 ACRE (C)
- 7.1 36 x 58 x 42 x 7.6

P P
17 2

P P
17 3

220
240

220 221
240 241

For Tax Purposes Only

Prepared by
MICHAEL BAKER, JR., INC.
Consulting Engineers
Rochester, Pennsylvania

Legend	
Property line	—
Edge of pavement or roadway	—
Corporation line	—
District line	—
County line	—
Original lot line	—
Dead lot number	(15)
Parcel or index number	(9)
Improvement	o
Railroad	—

Revisions			
1	3-18-63	9	1-97 AM
2	10-1-63	10	5-98 AM
3	9-23-74	11	9-01 AM
4	3-31-84	12	3/05 AM
5	7-1-84	13	8-07 AM
6	9-5-88	14	PENTREE
7	revised to 2-15-89	15	
8	revised to 1-1-90	16	

KEY MAP

200
220 221
240

MINGO COUNTY
STATE OF WEST VIRGINIA
Office of Assessor

DISTRICT	KERMIT
SHEET NO:	220
Date, Aerial Photography:	April, 1961
Date, Map:	July, 1962
Photo No:	
Scale:	1" = 400'