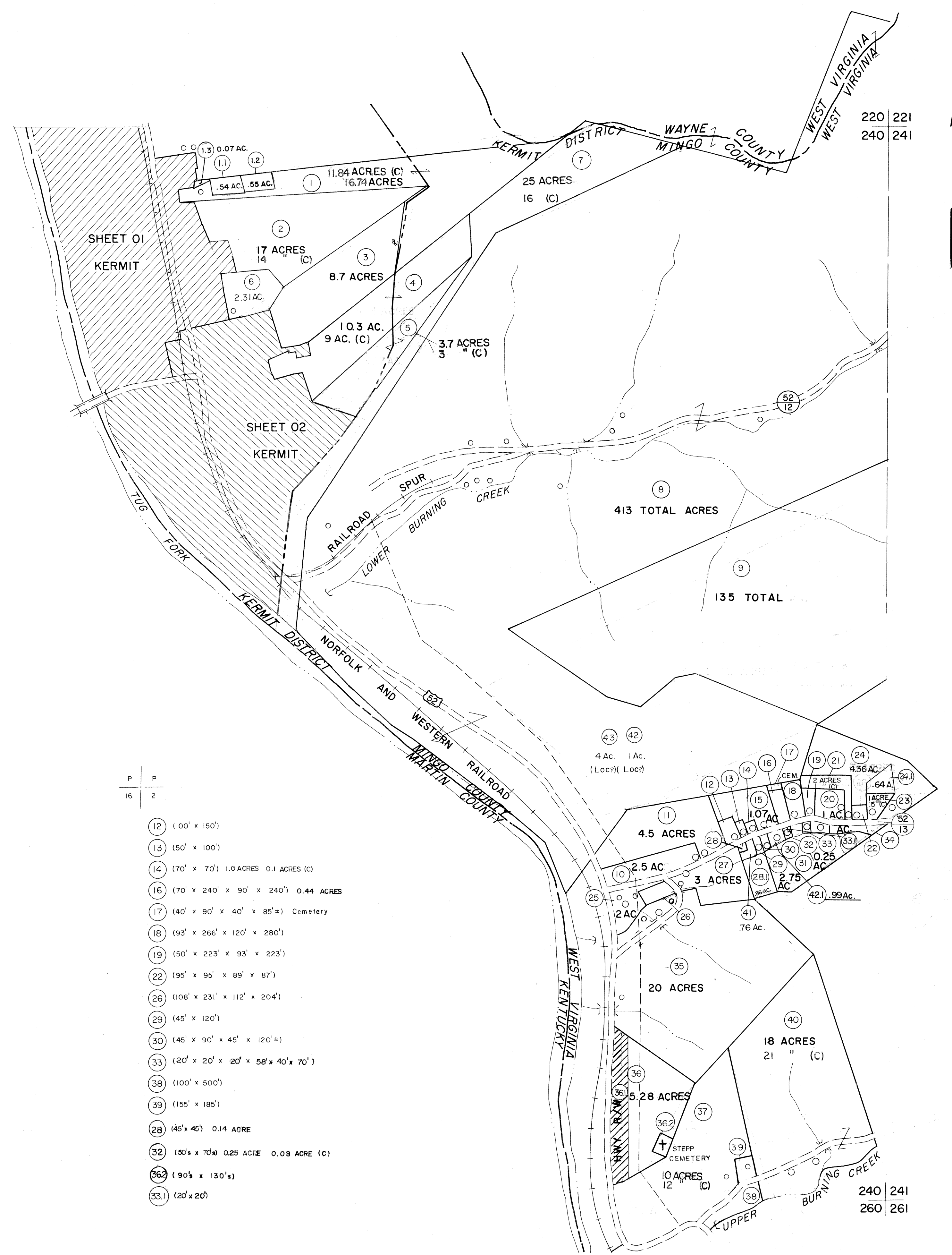


220  
240

220 221  
240 241



- | P    | P                                    |
|------|--------------------------------------|
| 12   | (100' x 150')                        |
| 13   | (50' x 100')                         |
| 14   | (70' x 70') 1.0 ACRES 0.1 ACRES (C)  |
| 16   | (70' x 240' x 90' x 240') 0.44 ACRES |
| 17   | (40' x 90' x 40' x 85'±) Cemetery    |
| 18   | (93' x 266' x 120' x 280')           |
| 19   | (50' x 223' x 93' x 223')            |
| 22   | (95' x 95' x 89' x 87')              |
| 26   | (108' x 231' x 112' x 204')          |
| 29   | (45' x 120')                         |
| 30   | (45' x 90' x 45' x 120'±)            |
| 33   | (20' x 20' x 20' x 58' x 40' x 70')  |
| 38   | (100' x 500')                        |
| 39   | (155' x 185')                        |
| 28   | (45' x 45') 0.14 ACRE                |
| 32   | (50' x 70') 0.25 ACRE 0.08 ACRE (C)  |
| 36   | (90' x 130')                         |
| 33.1 | (20' x 20')                          |

240  
260

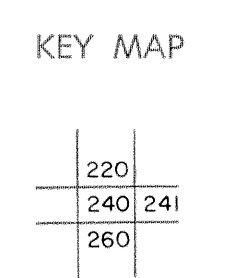
240 241  
260 261

For Tax Purposes Only

Prepared by  
**MICHAEL BAKER, JR., INC.**  
Consulting Engineers  
Rochester, Pennsylvania

| Legend                      |                        |
|-----------------------------|------------------------|
| Property line               | Original lot line      |
| Edge of pavement or roadway | Deed lot number        |
| Corporation line            | Parcel or index number |
| District line               | Improvement            |
| County line                 | Railroad               |

| Revisions |                    |
|-----------|--------------------|
| 1         | 9-18-62            |
| 2         | 10-1-63            |
| 3         | 9-23-74            |
| 4         | 3-31-84            |
| 5         | 7-1-84             |
| 6         | Revised to 7-1-85  |
| 7         | 8-1-86 PENTREE     |
| 8         | Revised to 2-15-89 |



**MINGO COUNTY**  
STATE OF WEST VIRGINIA  
Office of Assessor

DISTRICT  
**KERMIT**

SHEET NO: 240

Date, Aerial Photography: April, 1961 Date, Map: July, 1962  
Photo No: Scale: 1" = 400'