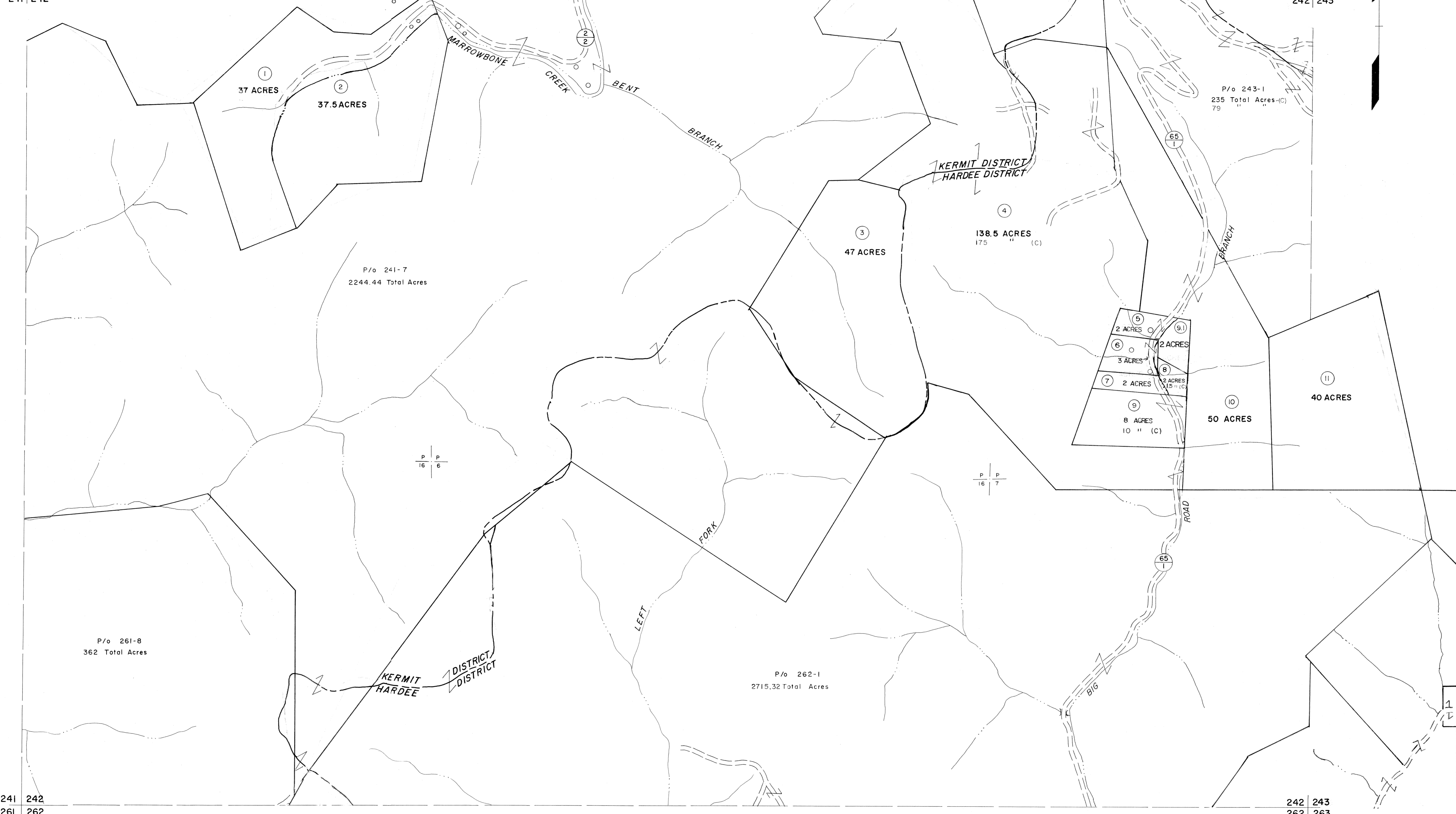


221 | 222
241 | 242

222 | 223
242 | 243



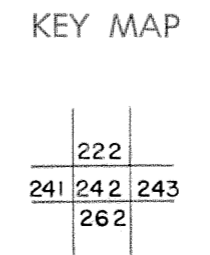
241 | 242
261 | 262

242 | 243
262 | 263

For Tax Purposes Only
Prepared by
MICHAEL BAKER, JR., INC.
Consulting Engineers
Rochester, Pennsylvania

Legend	
Property line	———
Edge of pavement or roadway	- - - - -
Corporation line	- · - · -
District line	- - - - -
County line	- - - - -
Original lot line	———
Deed lot number	(15)
Parcel or index number	(29)
Improvement	○
Railroad	—+—+—+—

Revisions			
1	9-15-62	9	
2	10-1-63	10	
3	9-23-74	11	GUNNIE, JC
4	3-31-84	12	
5	7-1-84	13	
6	12-30-86	14	PERITZEC
7		15	
8		16	



MINGO COUNTY
STATE OF WEST VIRGINIA
Office of Assessor

DISTRICT	KERMIT HARDEE
SHEET NO:	242
Date, Aerial Photography:	April, 1961
Date, Map:	July, 1962
Photo No:	
Scale:	1" = 400'