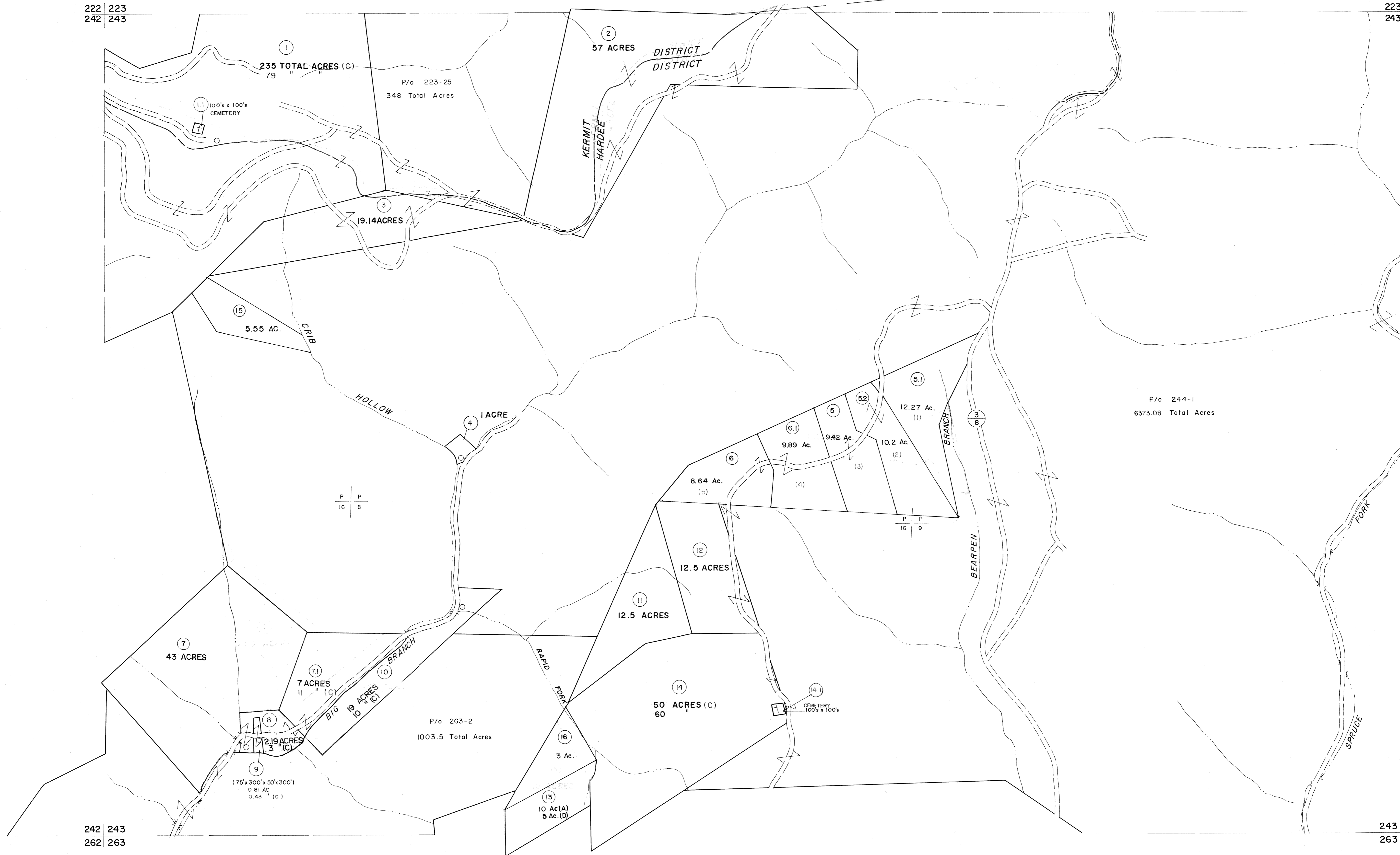


222 223
242 243

223 224
243 244



242 243
262 263

243 244
263 264

For Tax Purposes Only

Prepared by
MICHAEL BAKER, JR., INC.
Consulting Engineers
Rochester, Pennsylvania

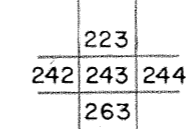
Legend

Property line	—————	Original lot line	-----
Edge of pavement or roadway	-----	Deed lot number	(15)
Corporation line	-----	Parcel or index number	(22)
District line	-----	Improvement	0
County line	-----	Railroad	+++++

Revisions

1	9-15-69	9	
2	9-15-74	10	
3	2-21-84	11	
4	2-1-84	12	
5	8-1-86	13	
6	Revised to 2-15-89	14	
7	Revised to 1-1-90	15	
8		16	

KEY MAP



MINGO COUNTY
STATE OF WEST VIRGINIA
Office of Assessor

DISTRICT
KERMIT
HARDEE

SHEET NO: 243

Date, Aerial Photography: April, 1961 Date, Map: July, 1962
Photo No: Scale: 1"=400'