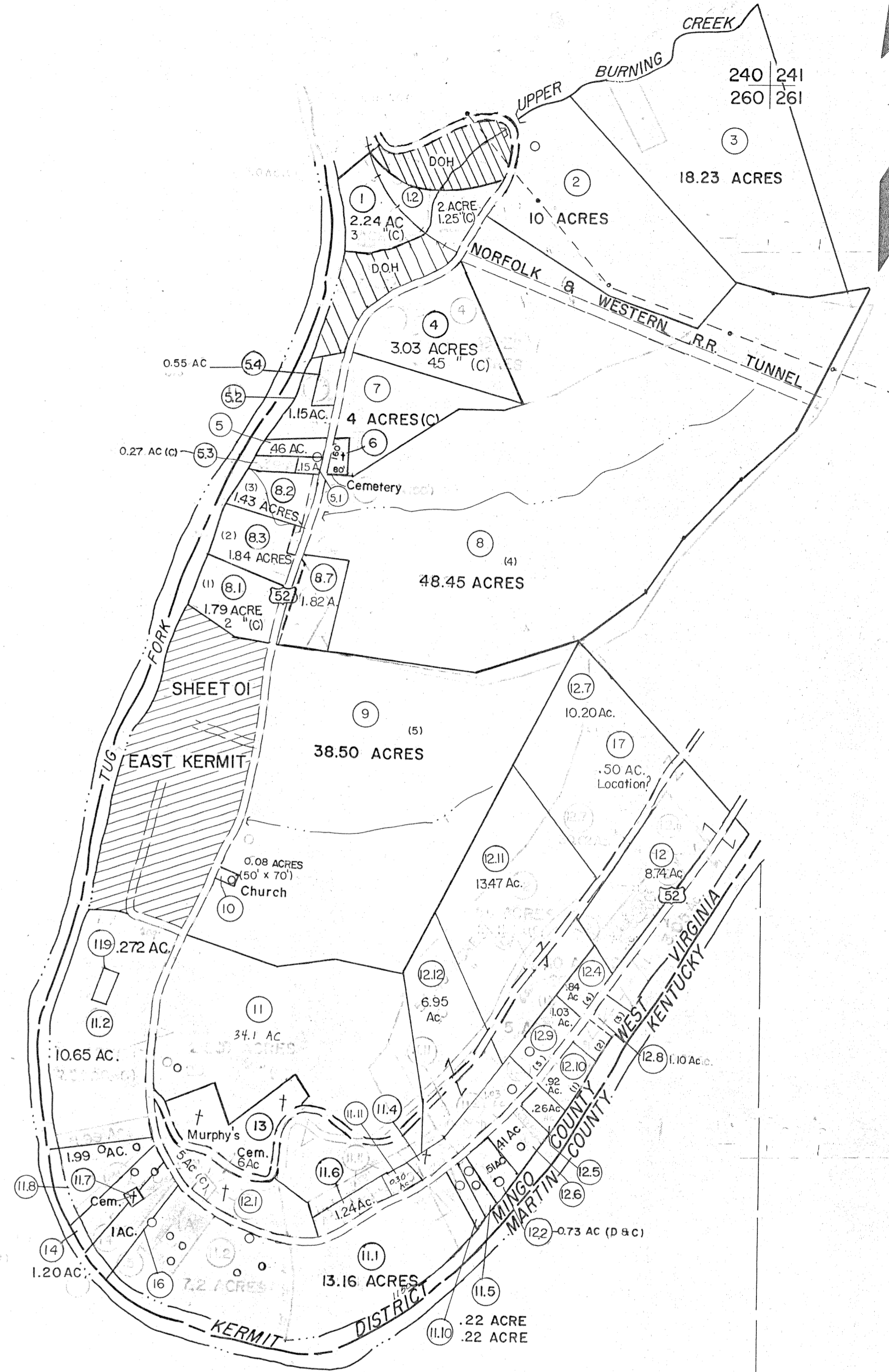


240
260

260



P	P
15	2

- (12.1) (700' x 125' x 650' x 225')
- (14) (20' x 320' x 100' x 310')
- (15) (100' x 300' x 100' x 310')
- (11.7) (60' x 60')

260 261
281

For Tax Purposes Only

Prepared by
MICHAEL BAKER, JR., INC.
 Consulting Engineers
 Rochester, Pennsylvania

Legend

Property line	—————	Original lot line	-----
Edge of pavement or roadway	-----	Dead lot number	(15)
Corporation line	-----	Parcel or index number	(99)
District line	-----	Improvement	o
County line	-----	Railroad	+

Revisions

1	3-15-63	9	2-2-93 AM	17
2	10-7-63	10	10-18-93 AM	18
3	9-24-74 Gunner JC	11	1-77 AM	19
4	3-31-84	12	6-98 AM	20
5	8-1-86 PENTRE	13	1-00 AM	21
6	6-1-87 L.E.S.	14	9-01 AM	22
7	Revised to 2-15-89 JF	15	3/05 BAW	23
8	Revised to 1-1-90	16	8/07 AM	24

KEY MAP

240	260
260	261

MINGO COUNTY
 STATE OF WEST VIRGINIA
 Office of Assessor

DISTRICT
KERMIT

SHEET NO: 260

Date, Aerial Photography: April, 1961 Date, Map: July, 1962
 Photo No: Scale: 1" = 400'