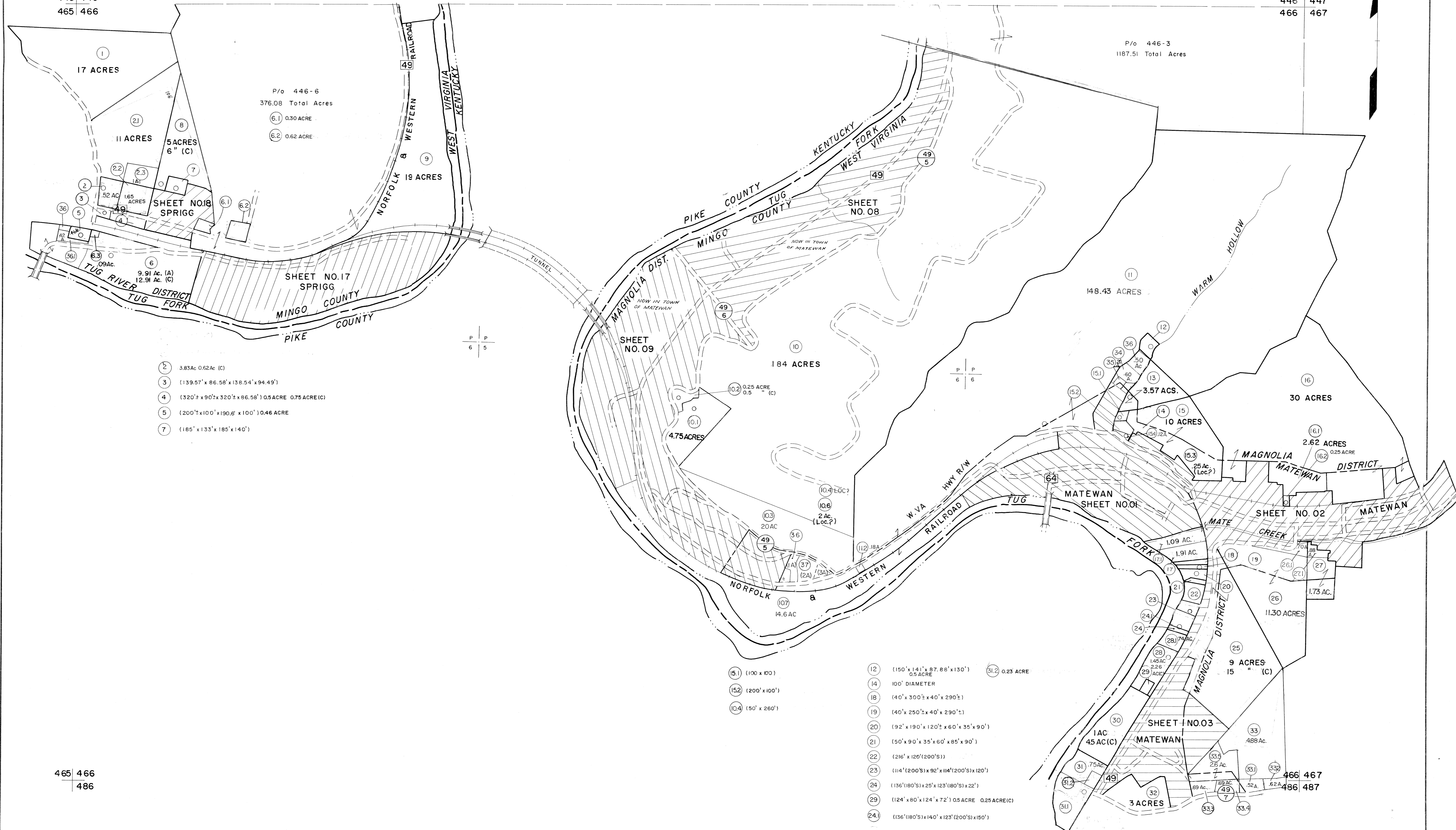


445 446  
465 466

446 447  
466 467



P/O 446-6  
376.08 Total Acres

P/O 446-3  
1187.51 Total Acres

- 2 3.83Ac 0.62Ac (C)
- 3 (139.57' x 86.58' x 138.54' x 94.49')
- 4 (320' x 90' x 320' x 86.58') 0.5ACRE 0.75ACRE(C)
- 5 (200' x 100' x 190.8' x 100') 0.46 ACRE
- 7 (185' x 133' x 185' x 140')

- 15.1 (100' x 100')
- 15.2 (200' x 100')
- 10.4 (50' x 260')
- 12 (150' x 141' x 87.88' x 130') 0.9 ACRE
- 14 100' DIAMETER
- 18 (40' x 300' x 40' x 290')
- 19 (40' x 250' x 40' x 290')
- 20 (92' x 190' x 120' x 60' x 35' x 90')
- 21 (50' x 90' x 35' x 60' x 85' x 90')
- 22 (216' x 120' (200'S))
- 23 (114' (200'S) x 92' x 114' (200'S) x 120')
- 24 (136' (180'S) x 25' x 123' (180'S) x 22')
- 29 (124' x 80' x 124' x 72') 0.5 ACRE 0.25 ACRE(C)
- 24 (136' (180'S) x 140' x 123' (200'S) x 150')
- 31.2 0.23 ACRE
- 31.2 0.23 ACRE
- 33 488 Ac.
- 33.3 2.6 Ac.
- 33.4 2.6 Ac.

465 466  
486

466 467  
486 487

**For Tax Purposes Only**

Prepared by  
**MICHAEL BAKER, JR., INC.**  
Consulting Engineers  
Rochester, Pennsylvania

Legend	
Property line	—————
Edge of pavement or roadway	—————
Corporation line	—————
District line	—————
County line	—————
Original lot line	-----
Deed lot number	(15)
Parcel or index number	(99)
Improvement	o
Railroad	—————

Revisions			
1	3-18-63	9	10-99 A.M.
2	10-1-63	10	6-01 A.M.
3	9-24-74 GUNVOX	11	4/05 BAN
4	3-31-84	12	
5	10-24-86 PENTREE	13	
6	2-15-89	14	TRL
7	1-1-90	15	
8	4-23-90	16	

KEY MAP	
446	447
465 466 467	
486	

**MINGO COUNTY**  
STATE OF WEST VIRGINIA  
Office of Assessor

DISTRICT	
<b>TUG RIVER MAGNOLIA</b>	
<b>SHEET NO: 466</b>	
Date, Aerial Photography: April, 1961	Date, Map: July, 1962
Photo No:	Scale: 1" = 400'