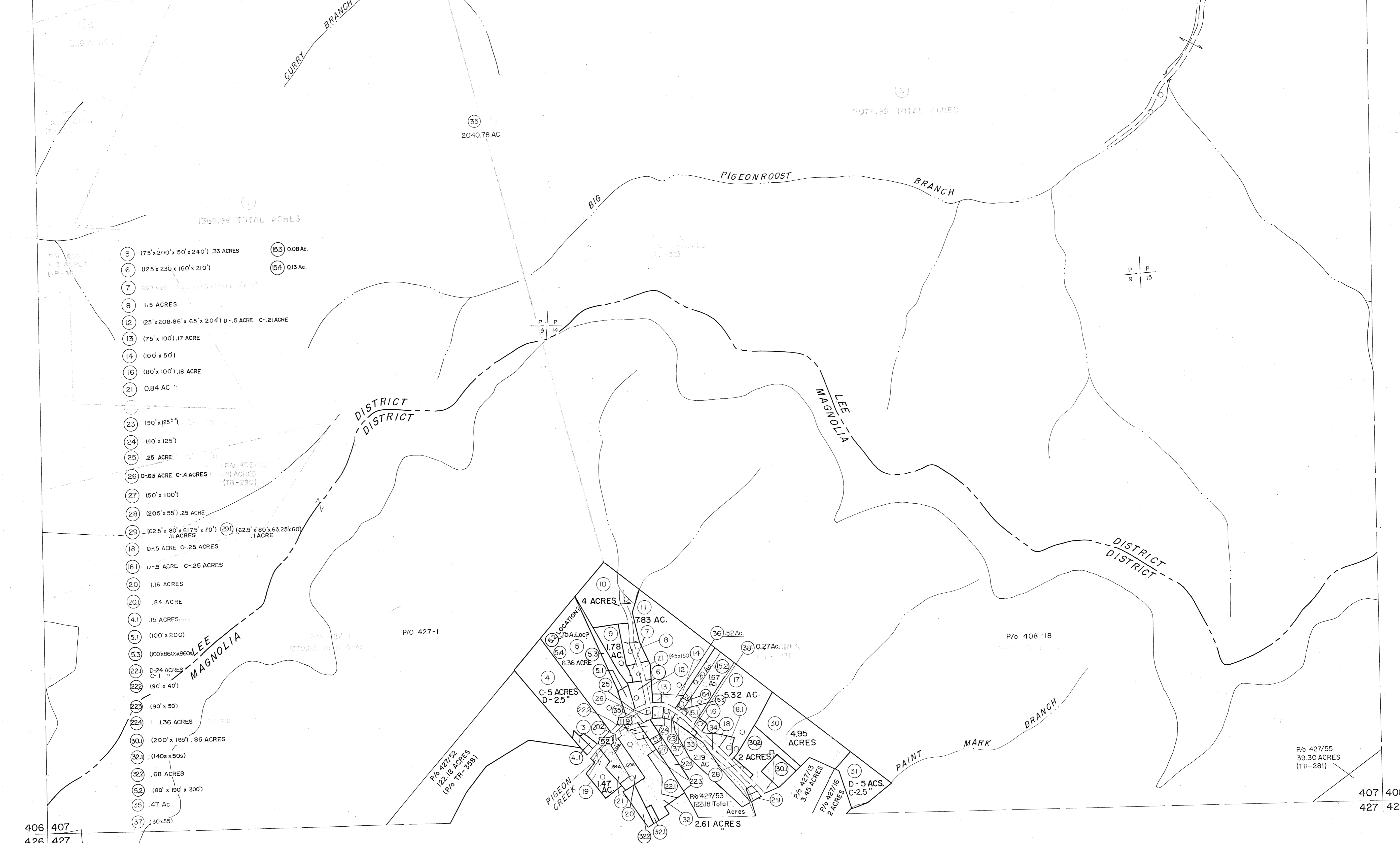


386 387  
406 407

387 388  
407 408



- 3 (75' x 210' x 50' x 240') .33 ACRES
- 6 (125' x 230' x 160' x 210')
- 7
- 8 1.5 ACRES
- 12 (25' x 208.86' x 65' x 204') D-.5 ACRE C-.21 ACRE
- 13 (75' x 100') .17 ACRE
- 14 (100' x 50')
- 16 (80' x 100') .18 ACRE
- 21 0.84 AC
- 23 (50' x 125')
- 24 (40' x 125')
- 25 .25 ACRE
- 26 D-.63 ACRE C-.4 ACRES
- 27 (50' x 100')
- 28 (205' x 55') .25 ACRE
- 29 (62.5' x 80' x 61.75' x 70') .11 ACRES (29) (62.5' x 80' x 63.25' x 60') .1 ACRE
- 18 D-.5 ACRE C-.25 ACRES
- 18.1 J-.5 ACRE C-.25 ACRES
- 20 1.16 ACRES
- 20.1 .84 ACRE
- 4.1 .15 ACRES
- 5.1 (100' x 200')
- 5.3 (100' x 80' x 80' x 80')
- 22.1 D-.24 ACRES C-.1
- 22.2 (90' x 40')
- 22.3 (90' x 50')
- 22.4 1.36 ACRES
- 30.1 (200' x 185') .85 ACRES
- 32.1 (140' x 50')
- 32.2 .68 ACRES
- 5.2 (80' x 190' x 300')
- 35 .47 AC.
- 37 (30' x 55')
- 15.3 0.08 Ac.
- 15.4 0.13 Ac.

For Tax Purposes Only  
 Prepared by  
**MICHAEL BAKER, JR., INC.**  
 Consulting Engineers

**Legend**

Property line	Original lot line
Edge of pavement or roadway	Deed lot number
Corporation line	Parcel or index number
District line	Improvement
County line	Railroad

**Revisions**

1	2-15-63	9	5-22-73 AM	17
2	10-1-63	10	4-27-74 AM	18
3	SEPT. 19, 1974	GBC	7-28-74 AM	19
4	3-31-84		10-29-84 AM	20
5	8-1-86 PENTREE		4/05 8AM	21
6	6-1-87 L. E.S.			22
7	2-1-89	TRL		23
				24

**KEY MAP**

387
406 407 408
427

**MINGO COUNTY**  
 STATE OF WEST VIRGINIA  
 Office of Assessor

DISTRICT **LEE MAGNOLIA**  
**SHEET NO: 407**  
 Date, Aerial Photography: April, 1961 Date, Map: July, 1962  
 Photo No: Scale: 1" = 400'