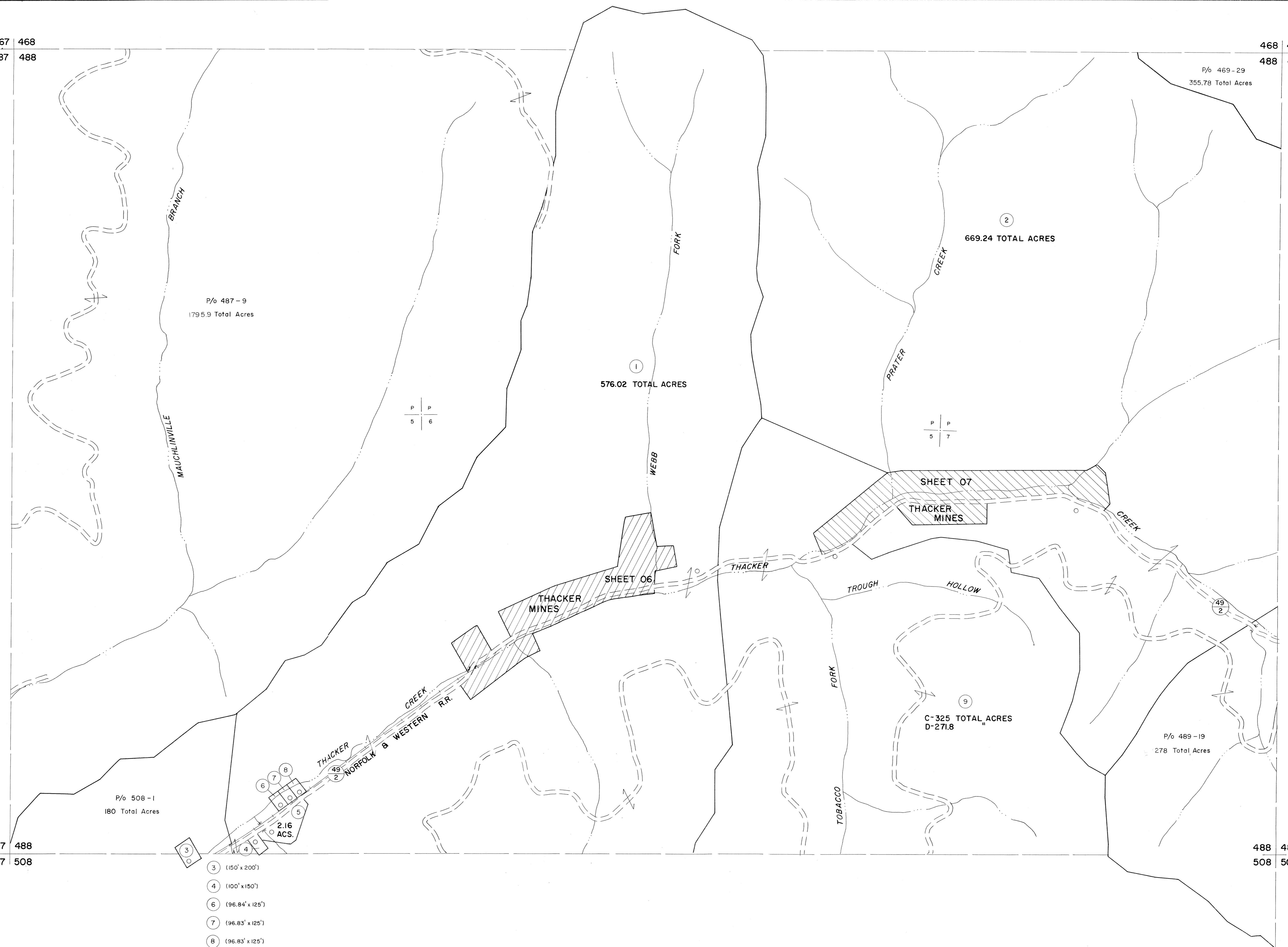


467 468  
487 488

468 469  
488 489

487 488  
507 508

488 489  
508 509

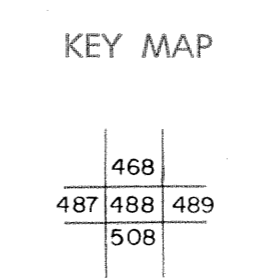


- ③ (150' x 200')
- ④ (100' x 150')
- ⑥ (96.84' x 125')
- ⑦ (96.83' x 125')
- ⑧ (96.83' x 125')

For Tax Purposes Only  
 Prepared by  
**MICHAEL BAKER, JR., INC.**  
 Consulting Engineers  
 Rochester, Pennsylvania

| Legend                      |      |
|-----------------------------|------|
| Property line               | —    |
| Edge of pavement or roadway | —    |
| Corporation line            | —    |
| District line               | —    |
| County line                 | —    |
| Original lot line           | —    |
| Deed lot number             | (15) |
| Parcel or index number      | (29) |
| Improvement                 | ○    |
| Railroad                    | —+—  |

| Revisions |                  |    |    |
|-----------|------------------|----|----|
| 1         | 9-18-68          | 9  | 17 |
| 2         | 3-31-64          | 10 | 18 |
| 3         | 7-1-67           | 11 | 19 |
| 4         | 10-23-86 PENTREE | 12 | 20 |
| 5         | 3-3-93 A.A.      | 13 | 21 |
| 6         |                  | 14 | 22 |
| 7         |                  | 15 | 23 |
| 8         |                  | 16 | 24 |



**MINGO COUNTY**  
 STATE OF WEST VIRGINIA  
 Office of Assessor

DISTRICT **MAGNOLIA**  
**SHEET NO: 488**  
 Date, Aerial Photography: April, 1961 Date, Map: July, 1962  
 Photo No. Scale: 1" = 400'