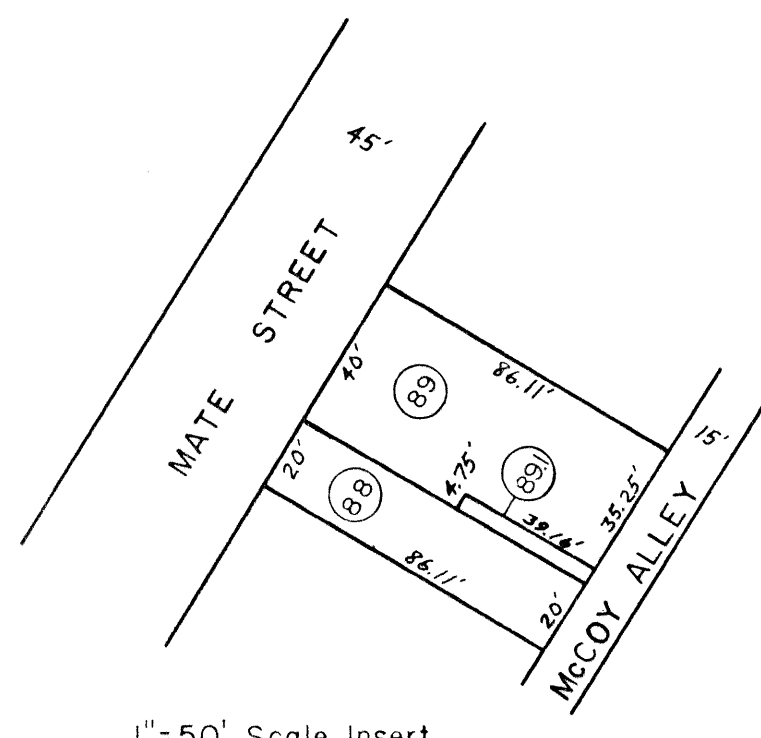
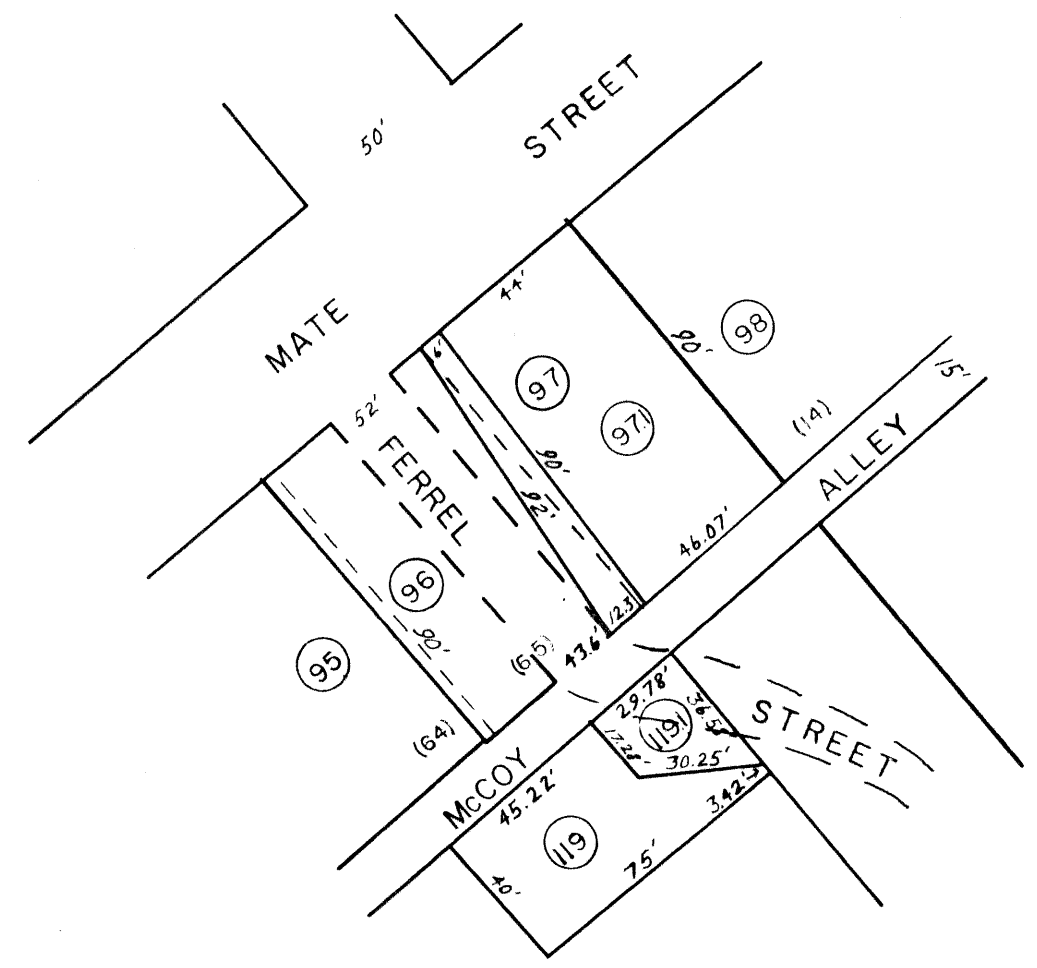


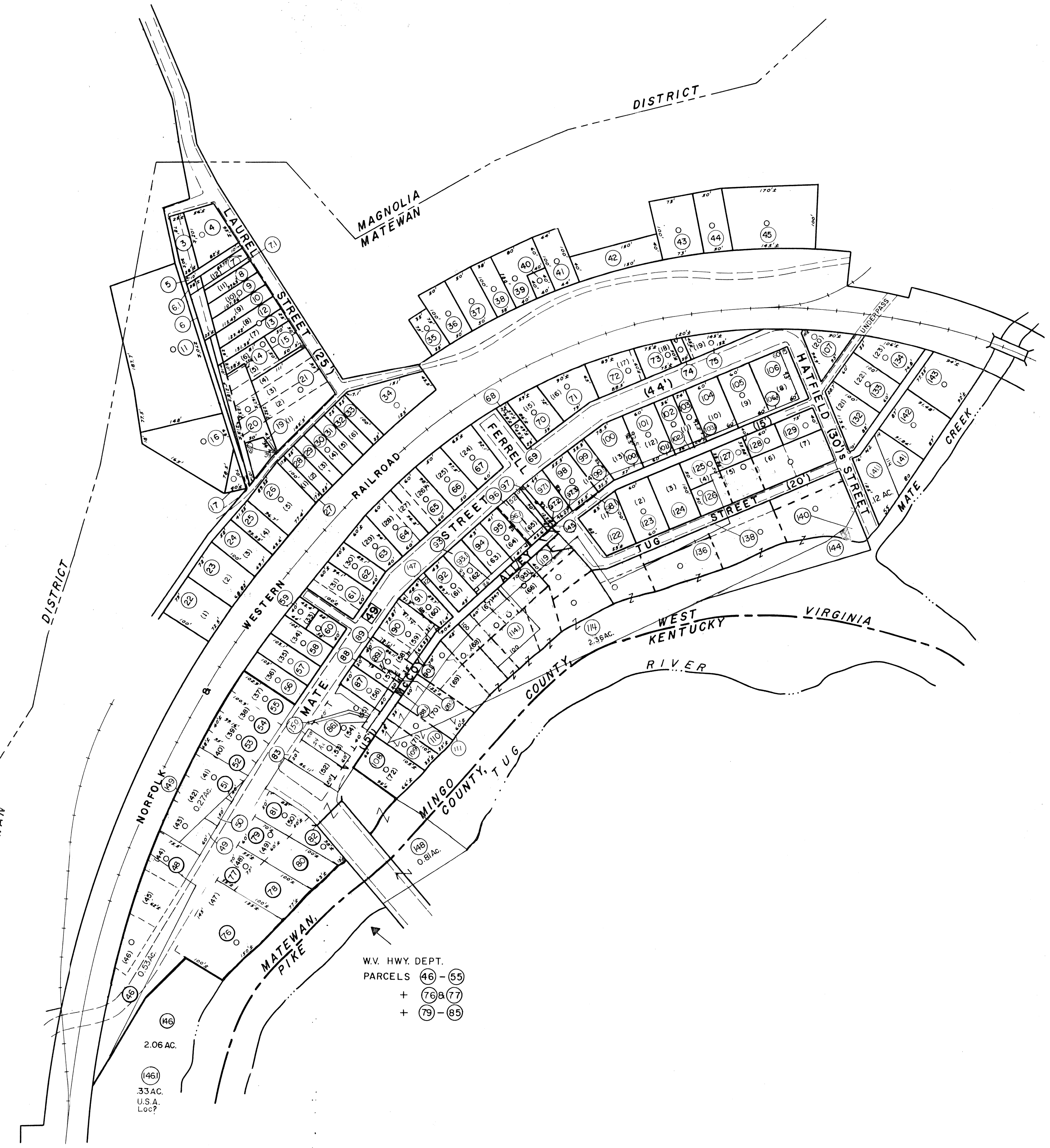
1"=50' Scale Insert



1"=50' Scale Insert



1"=50' Scale Insert



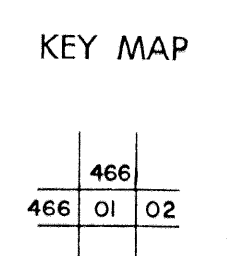
W.V. HWY. DEPT.
 PARCELS 46-55
 + 76B 77
 + 79-85

For Tax Purposes Only

Prepared by
MICHAEL BAKER, JR., INC.
 Consulting Engineers
 Rochester, Pennsylvania

Legend	
Property line	—————
Edge of pavement or roadway	———
Corporation line	-----
District line	- - - - -
County line	—————
Original lot line	-----
Deed lot number	(15)
Parcel or index number	(99)
Improvement	○
Railroad	—————

Revisions			
1	8-18-68	9	6-12 AM
2	10-1-68	10	10-1-68 AM
3	9-18-74	11	8-12-76 AM
4	3-31-84	12	3-98 AM
5	7-1-82	13	4-01 AM
6	6-1-87	14	1/05 AM
7	REV. TO 2-15-89	15	5/07 AM
8	Revised to 1-2-90	16	



MINGO COUNTY
 STATE OF WEST VIRGINIA
 Office of Assessor

DISTRICT
MATEWAN

SHEET NO: 01

Date, Aerial Photography: April, 1961 Date, Map: July, 1962
 Photo No. 285-6-6 Scale: 1"=100'