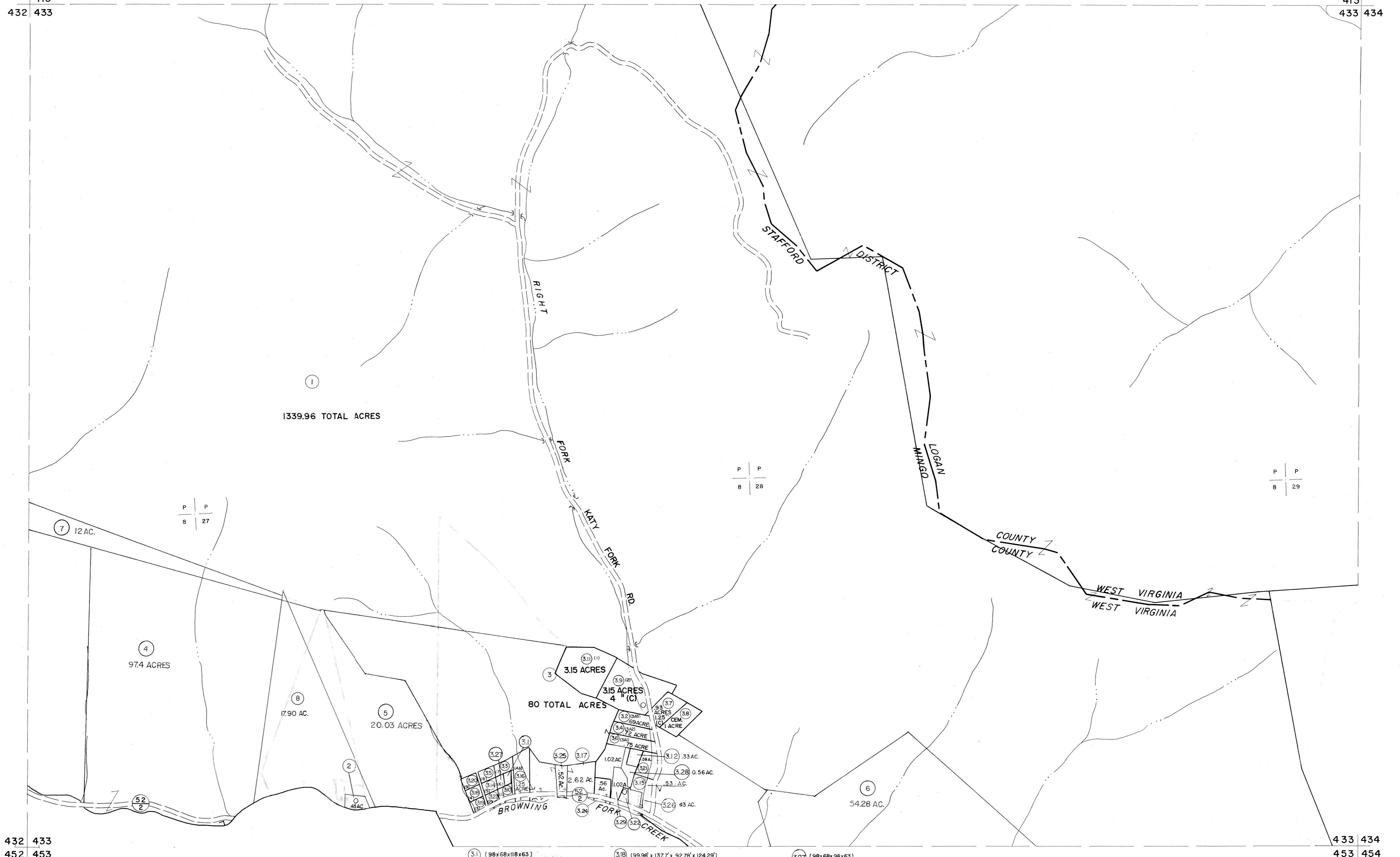


413
432 433

413
433 434



432 433
452 453

433 434
453 454

- (3.1) (98x68x118x63)
- (3.3) (85.8' x 74.88' x 119.23' x 152.56' x 112.98')
- (3.5) (112.98' x 133.05' x 106.78' x 152.55')
- (3.10) (1266' x 118.93' x 15' x 44.99' x 301' x 102' x 143.46')
- (3.14) (9856' x 116.14' x 92.78' x 133.05')
- (3.18) (99.98' x 137.7' x 92.78' x 124.29')
- (3.19) (115.86' x 30.21' x 7.5' x 93.23' x 124.29' x 1001')
- (3.20) (106.78' x 137.7' x 100.02' x 152.49')
- (3.21) (502' x 1105')
- (3.22) (100' x 30.21' x 7.5' x 93.23' x 116.14' x 143.46')
- (3.27) (98x68x96x63)

For Tax Purposes Only

Prepared by
MICHAEL BAKER, JR., INC.
Consulting Engineers
Rochester, Pennsylvania

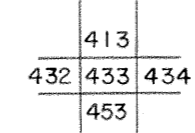
Legend

Property line	—————	Original lot line	-----
Edge of pavement or roadway	—————	Deed lot number	(15)
Corporation line	-----	Parcel or index number	(99)
District line	-----	Improvement	o
County line	-----	Railroad	—+—+—+—

Revisions

1	9-15-63	9	17
2	3-31-64	10	18
3	12-20-64	11	19
4	2-15-69	12	20
5	Revised to 1-1-70	13	21
6	4-2-73 AM	14	22
7	2-97 AM	15	23
8		16	24

KEY MAP



MINGO COUNTY
STATE OF WEST VIRGINIA
Office of Assessor

DISTRICT

STAFFORD

SHEET NO: 433

Date, Aerial Photography: April, 1961 Date, Map: July, 1962
Photo No: Scale: 1" = 400'