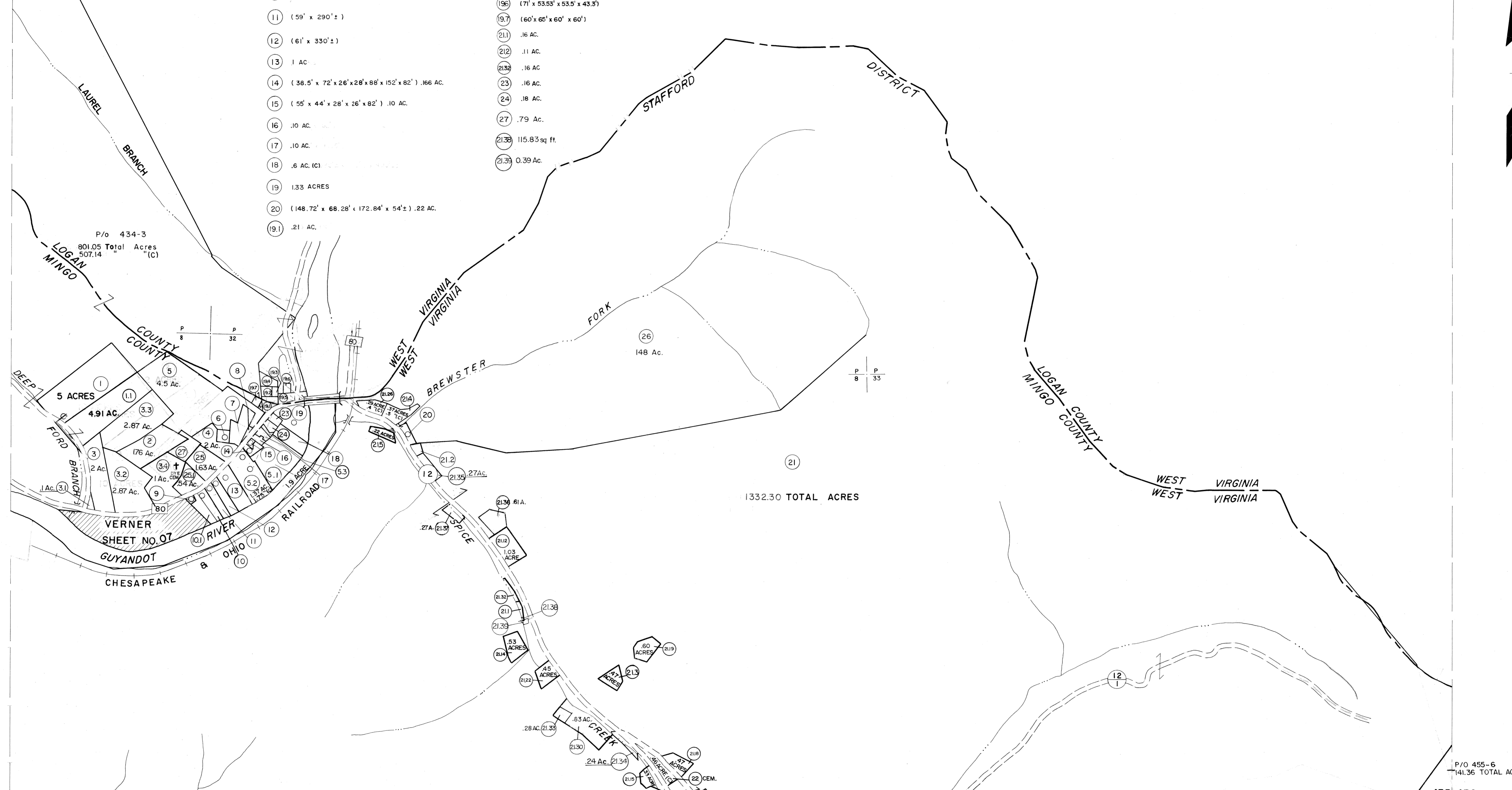


414
434 435

435 436

- (53) 134.82' x 97.95' x 13' x 74.32' x 40'
- (6) (95' x 89')
- (7) (274' x 57' x 62' x 90' x 58' x 165' x 120')
- (8) (160' x 160' x 66')
- (9) (76' x 55' x 45' x 64')
- (10) 0.25 AC.
- (11) (59' x 290' ±)
- (12) (61' x 330' ±)
- (13) 1 AC.
- (14) (38.5' x 72' x 26' x 28' x 88' x 152' x 82') .166 AC.
- (15) (55' x 44' x 28' x 26' x 82') .10 AC.
- (16) .10 AC.
- (17) .10 AC.
- (18) .6 AC. (C)
- (19) 1.33 ACRES
- (20) (148.72' x 68.28' x 172.84' x 54' ±) .22 AC.
- (19.1) .21 AC.
- (19.2) .11 AC.
- (19.3) .07 AC.
- (19.4) 50 AC. .3 AC. (C)
- (19.5) .46 AC. .33 AC. (C)
- (19.6) (71' x 53.53' x 53.5' x 43.3')
- (19.7) (60' x 65' x 60' x 60')
- (21.1) .16 AC.
- (21.2) .11 AC.
- (21.3) .16 AC.
- (23) .16 AC.
- (24) .18 AC.
- (27) .79 AC.
- (21.38) 115.83 sq. ft.
- (21.39) 0.39 AC.



434 435
454 455

P/O 455-6
141.36 TOTAL ACRES
435 436
455 456

For Tax Purposes Only
Prepared by
MICHAEL BAKER, JR., INC.
Consulting Engineers
Rochester, Pennsylvania

Legend	
Property line	———
Edge of pavement or roadway	—————
Corporation line	—————
District line	—————
County line	—————
Original lot line	-----
Deed lot number	(15)
Parcel or index number	(99)
Improvement	○
Railroad	———

Revisions			
1	8-15-68	9	4-2-93 A.M.
2	10-1-63	10	10-99 A.M.
3	11-1-63	11	5-01 A.M.
4	SEP 20, 1974 GUNNOR GBC	12	
5	3-31-84	13	
6	12-30-84 DENTREE	14	
7	2-15-89	15	TRL
8	Revised to 11-90	16	

KEY MAP
434 435 436
455

MINGO COUNTY
STATE OF WEST VIRGINIA
Office of Assessor

DISTRICT
STAFFORD
SHEET NO: 435
Date, Aerial Photography: April, 1961 Date, Map: July, 1962
Photo No: Scale: 1" = 400'