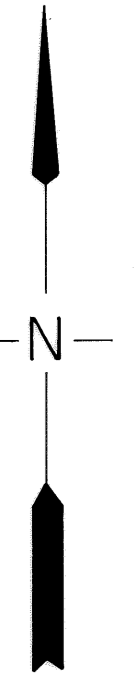
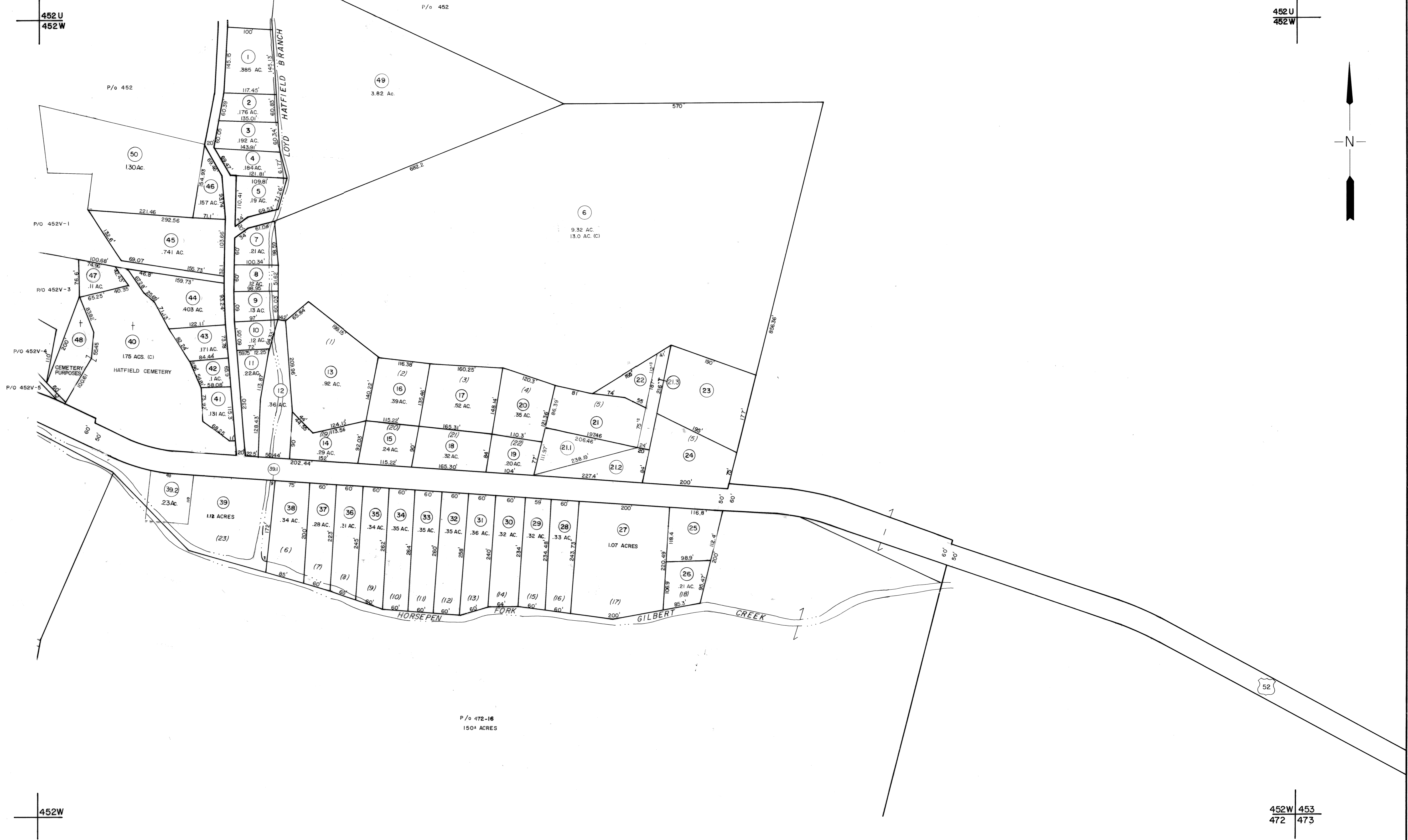


452 U
452 W

452 U
452 W



For Tax Purposes Only

Prepared by
LOCAL GOVERNMENT RELATIONS DIV.
STATE TAX COMMISSIONER
CHARLESTON, W.VA.

LEGEND

Property line	Original lot line
Edge of pavement or roadway	Deed lot number
Corporation line	Parcel or index number
District line	Improvement
County line	Railroad
State line	Scaled dimension
Land hook	Deed dimension
Water	Calculated area

REVISIONS

12-30-86	PRINTING
6-1-87	L. E. S.
2-15-89	TRL
4-2-93	A.H.
2-27-94	A.H.
10-22-94	A.H.

RESTRICTION

All tax maps created under the provisions of reappraisal legislation are the property of the State of West Virginia and the reproduction, copying, distribution or sale of such tax maps or any copies thereof without the written permission of the State Tax Commissioner is prohibited by law.

KEY MAP

452	452U	453
452V	452W	453
472	472	473

MINGO COUNTY
STATE OF WEST VIRGINIA

Office of Assessor

HAMRICK SUBDIVISION

DISTRICT: **STAFFORD**

SHEET NO: 452W

Date, Aerial Photography: Photo No: Date, Map: 7/31/84 Scale: 1" = 100'