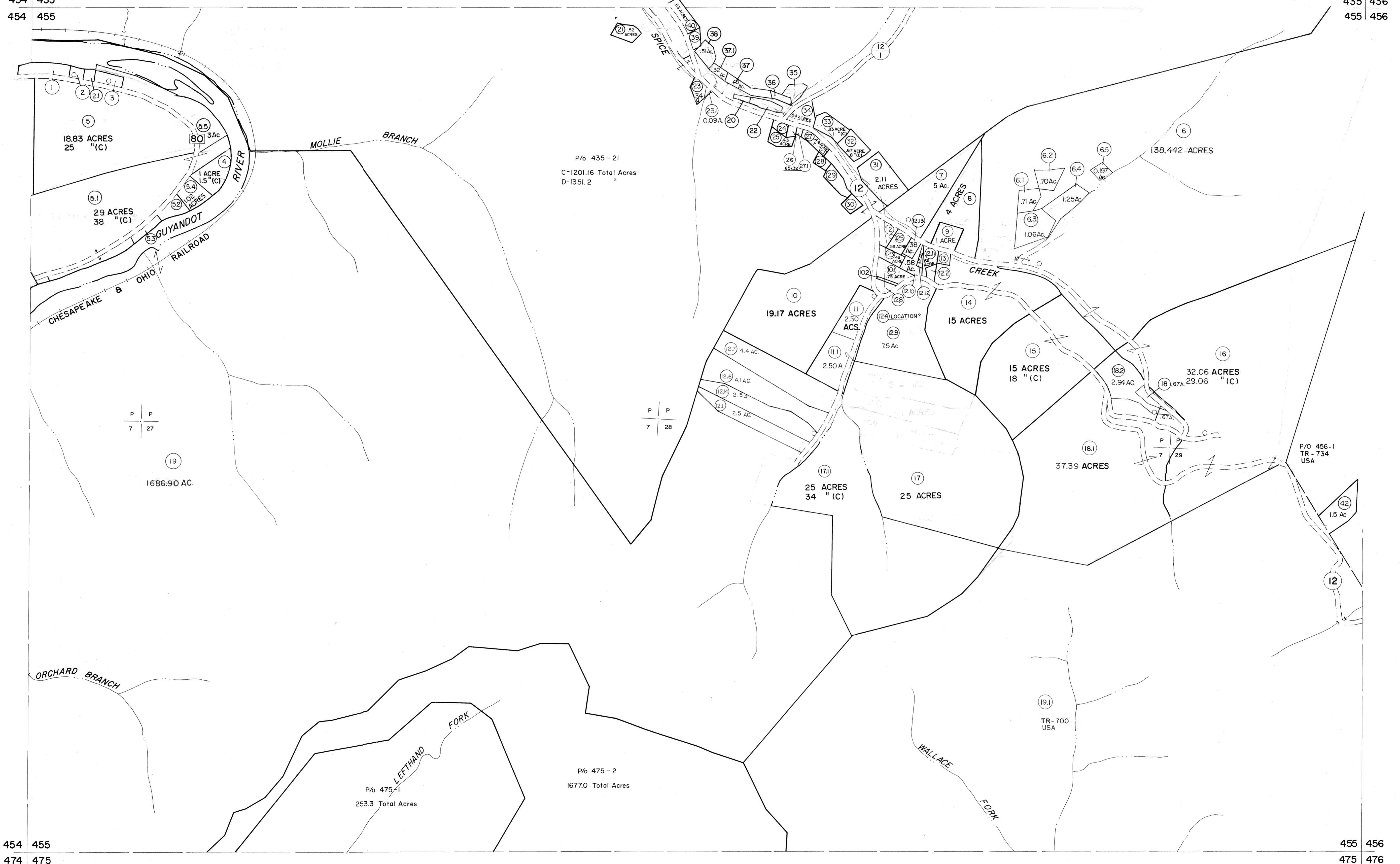


- ① (400' x 100') 1 AC.
- ② .26 AC.
- ②.1 .24 AC.
- ③ (233' x 100')
- ⑤.2 1 AC .64 AC. (C)
- ⑤.3 (300' x 50')
- ⑩.2 (16' x 215' x 16' x 212.33')
- ⑫ .831 AC.
- ⑫.2 (80' x 70' x 140' x 90')
- ⑫.4 .639 AC.
- ⑫.8 .51 AC. .25 AC. (C)
- ⑫.10 .10 AC.
- ⑫.22 .37 AC. .5 AC. (C)
- ⑫.24 .22 AC.
- ⑫.25 .21 AC.
- ⑫.27 AC.
- ⑫.29 .39 AC. .75 AC. (C)
- ⑫.30 .43 AC.
- ⑫.35 4 AC.
- ⑫.36 .21 AC.
- ⑫.39 .28 AC.



For Tax Purposes Only  
 Prepared by  
**MICHAEL BAKER, JR., INC.**  
 Consulting Engineers  
 Rochester, Pennsylvania

Legend	
Property line	———
Edge of pavement or roadway	———
Corporation line	———
District line	———
County line	———
Original lot line	-----
Deed lot number	(15)
Parcel or index number	(99)
Improvement	○
Railroad	——+——

Revisions	
1 9-18-83	2-97 A.M.
2 9-24-74	Gunwade GBC
3 3-31-84	6-01 A.M.
4 12-30-84	PENTREE 4/05 B.A.M.
5 6-1-87	L.E.S.
6 2-15-89	TRL
7 Revised to 1-1-90	
8 3-18-93 A.M.	

KEY MAP	
435	436
454 455 456	455 456
475	476

**MINGO COUNTY**  
 STATE OF WEST VIRGINIA  
 Office of Assessor

DISTRICT	
<b>STAFFORD</b>	
<b>SHEET NO: 455</b>	
Date, Aerial Photography: April, 1961	Date, Map: July, 1962
Photo No:	Scale: 1" = 400'