

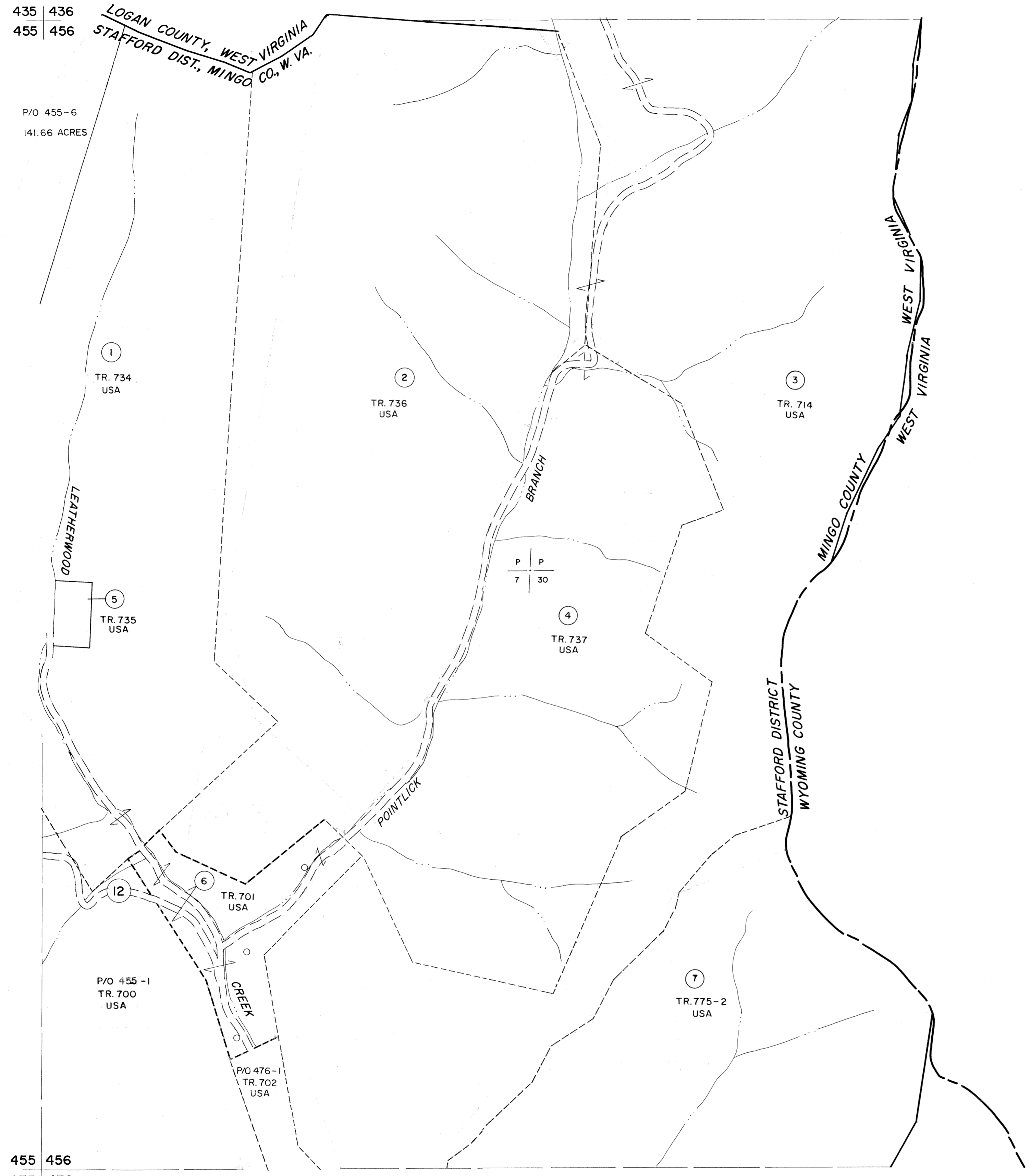
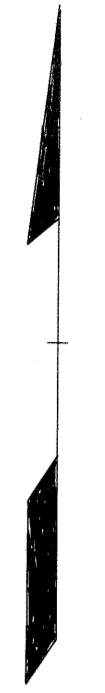
435 436
455 456

P/O 455-6
141.66 ACRES

LOGAN COUNTY, WEST VIRGINIA
STAFFORD DIST., MINGO CO., W. VA.

455 456
475 476

436
456



P P
7 31

456
476

For Tax Purposes Only

Prepared by
MICHAEL BAKER, JR., INC.
Consulting Engineers
Rochester, Pennsylvania

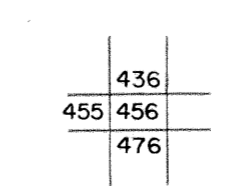
Legend

Property line	———	Original lot line	-----
Edge of pavement or roadway	———	Deed lot number	(15)
Corporation line	-----	Parcel or index number	(99)
District line	-----	Improvement	O
County line	-----	Railroad	—+—+—+—

Revisions

1	9-18-63	9	17
2	10-1-63	10	18
3	SRV: 24, 1974	11	19
4	3-31-84	12	20
5	7-1-84	13	21
6	12-17-86 PENTREE	14	22
7	4-1-93 A.H.	15	23
8		16	24

KEY MAP



MINGO COUNTY
STATE OF WEST VIRGINIA
Office of Assessor

DISTRICT

STAFFORD

SHEET NO: 456

Date, Aerial Photography: April, 1961 Date, Map: July, 1962
Photo No: Scale: 1" = 400'