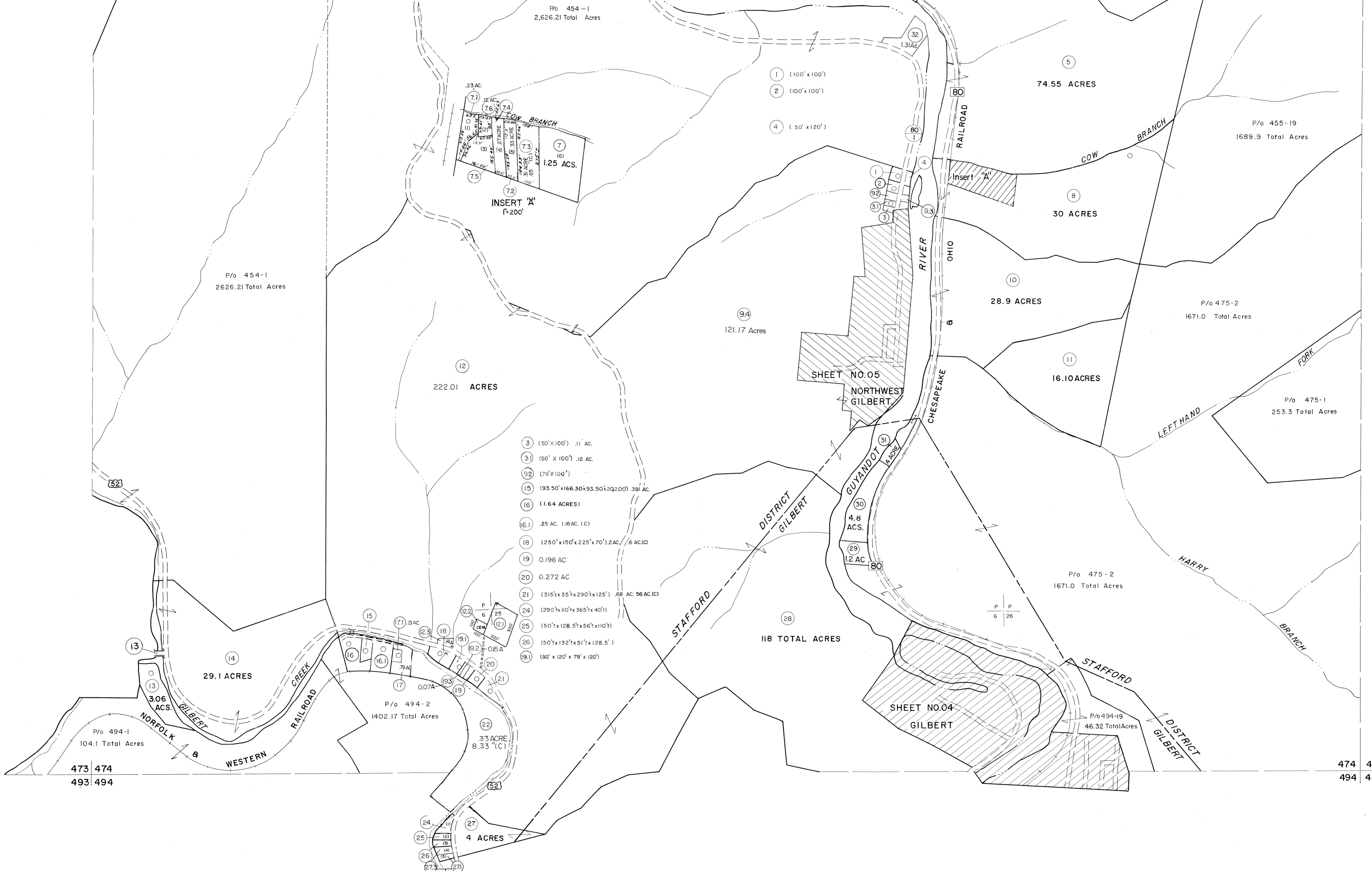


453 454
473 474

454 455
474 475



- ③ (50' X 100') .11 AC.
- ③① (50' X 100') .12 AC.
- ③② (78' X 100')
- ①⑤ (93.50' X 166.30' X 93.50' X 292.00') .391 AC.
- ①⑥ (1.64 ACRES)
- ①⑥① .25 AC. 1.18 AC. (C)
- ①⑧ (250' X 150' X 225' X 70') 2 AC. 6 AC. (C)
- ①⑨ 0.196 AC
- ②① 0.272 AC
- ②① (315' X 35' X 290' X 125') .68 AC. 56 AC. (C)
- ②④ (290' X 110' X 365' X 40')
- ②⑤ (50' X 128.6' X 56' X 110')
- ②⑥ (50' X 132' X 51' X 128.5')
- ①⑨① 192' X 120' X 79' X 120'

For Tax Purposes Only
 Prepared by
MICHAEL BAKER, JR., INC.
 Consulting Engineers
 Rochester, Pennsylvania

Legend	
Property line	—
Edge of pavement or roadway	—
Corporation line	—
District line	—
County line	—
Original lot lines	—
Deed lot number	(15)
Parcel or index number	②②
Improvement	○
Railroad	—

Revisions			
1	9-18-63	9	10-99 AM
2	10-1-63	10	6-01 AM
3	9-28-74	11	4/05 8 AM
4	3-31-84	12	
5	12-19-86	13	
6	Revised to 1-1-90	14	
7	2-99 AM	15	
8	7-98 AM	16	

KEY MAP
 454
 473 474 475
 494

MINGO COUNTY
 STATE OF WEST VIRGINIA
 Office of Assessor

DISTRICT	
STAFFORD	
SHEET NO: 474	
Date, Aerial Photography: April, 1961	Date, Map: July, 1962
Photo No:	Scale: 1" = 400'