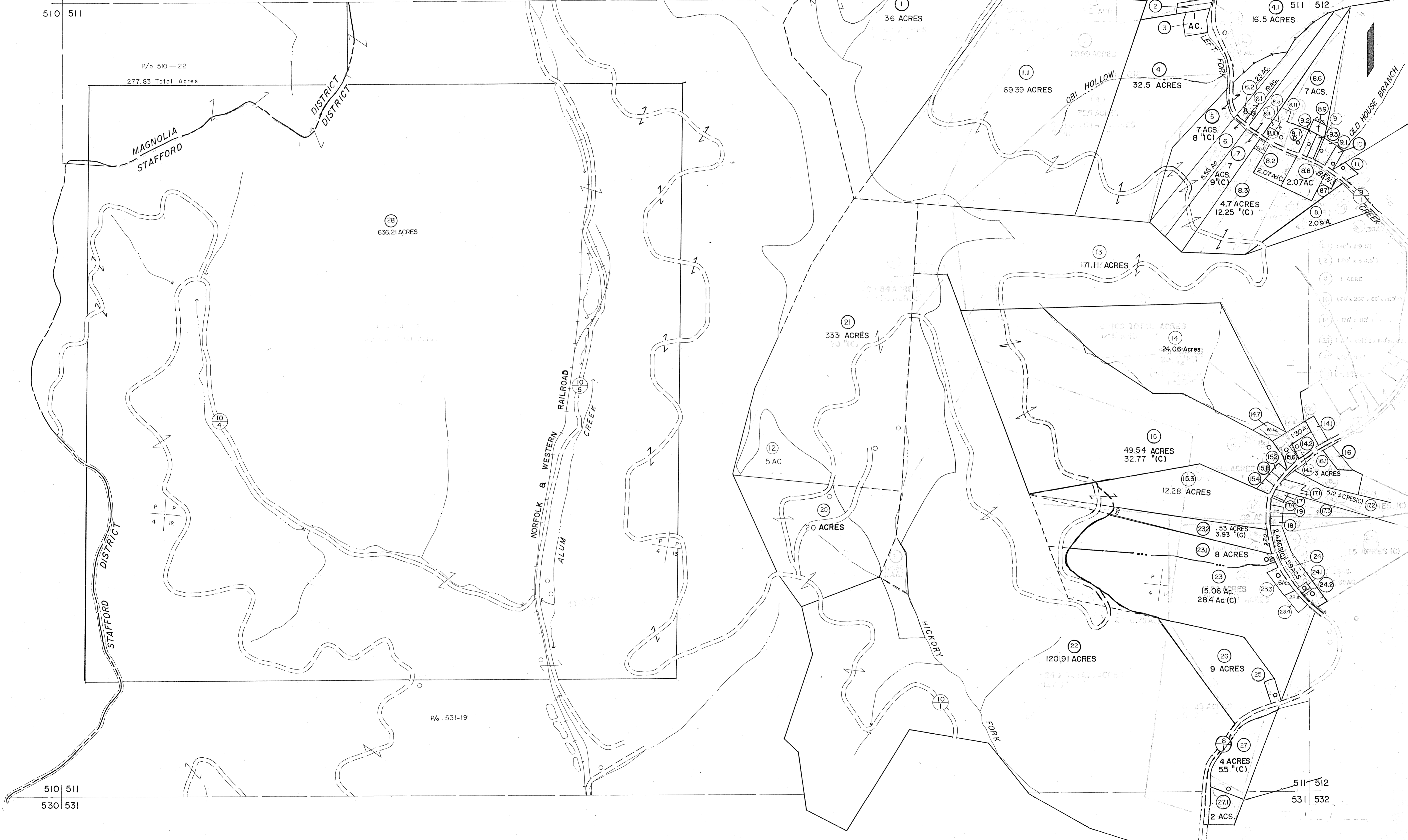


490 491

510 511

P/O 510-22
277.83 Total Acres



- (2) .54 AC. .37 AC.(C)
- (2.1) .46 AC. .29 AC.(C)
- (8.1) (161' x 184' x 141' x 200')
- (8.2) (300' x 300')
- (8.4) (78' x 115') .21 AC.
- (8.5) (36' x 94' x 38' x 94') .8 AC.(C)
- (8.7) .23 AC.
- (8.9) .34 AC.(C) CEM.
- (9.1) (136' x 191' x 100' x 182')
- (9.2) (78' x 184')
- (9.3) (62' x 184' x 61.6' x 184')
- (10) .25 AC.
- (11) (176' x 110')
- (14.1) (100' x 248')
- (14.2) (123' x 185')
- (14.3) (140' x 185')
- (14.4) (62' x 185')
- (15.1) (100' x 100') .23 AC.
- (15.2) (100' x 100') .23 AC.
- (15.4) (100' x 100') .23 AC.(C)
- (15.6) .56 AC.
- (16) (100' x 285' x 131' x 210')
- (17) (75' x 100')
- (17.1) .5 AC.
- (17.2) (285' x 101' x 193' x 185' x 65' x 57' x 52' x 8' x 100')
- (17.3) (60' x 100' x 90' x 77' x 79' x 100' x 100')
- (17.4) (115' x 100')
- (18) (75' x 100')
- (19) (100' x 100')
- (24.1) .125 AC.
- (24.2) (118' x 85')
- (25) (120' x 216' x 100' x 216')
- (25.1) .09 AC.
- (14.6) (8 x 155 x 28 x 155) 0.06 AC.

510 511

530 531

P/6 531-19

For Tax Purposes Only

Prepared by
MICHAEL BAKER, JR., INC.
Consulting Engineers
Rochester, Pennsylvania

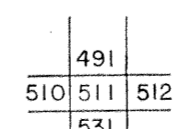
Legend

- Property line ————
- Edge of pavement or roadway ————
- Corporation line ————
- District line ————
- County line ————
- Original lot line - - - - -
- Deed lot number (15)
- Parcel or index number (29)
- Improvement O
- Railroad ————

Revisions

1	9-19-63	9	2-27 AM	17	
2	10-1-63	10	6-25 AM	18	
3	9-28-74 GUNNIE ES.	11	3-05 BMM	19	
4	3-31-84	12	10-07 AM	20	
5	12-12-86 PER TREE	13		21	
6	6-1-87 L.E.S.	14		22	
7	Revised to 1-1-90 SF	15		23	
8	3-9-93 AM	16		24	

KEY MAP



MINGO COUNTY
STATE OF WEST VIRGINIA
Office of Assessor

DISTRICT
STAFFORD

SHEET NO: 511

Date, Aerial Photography: April, 1961 Date, Maps: July, 1962
Photo No: Scale: 1" = 400'