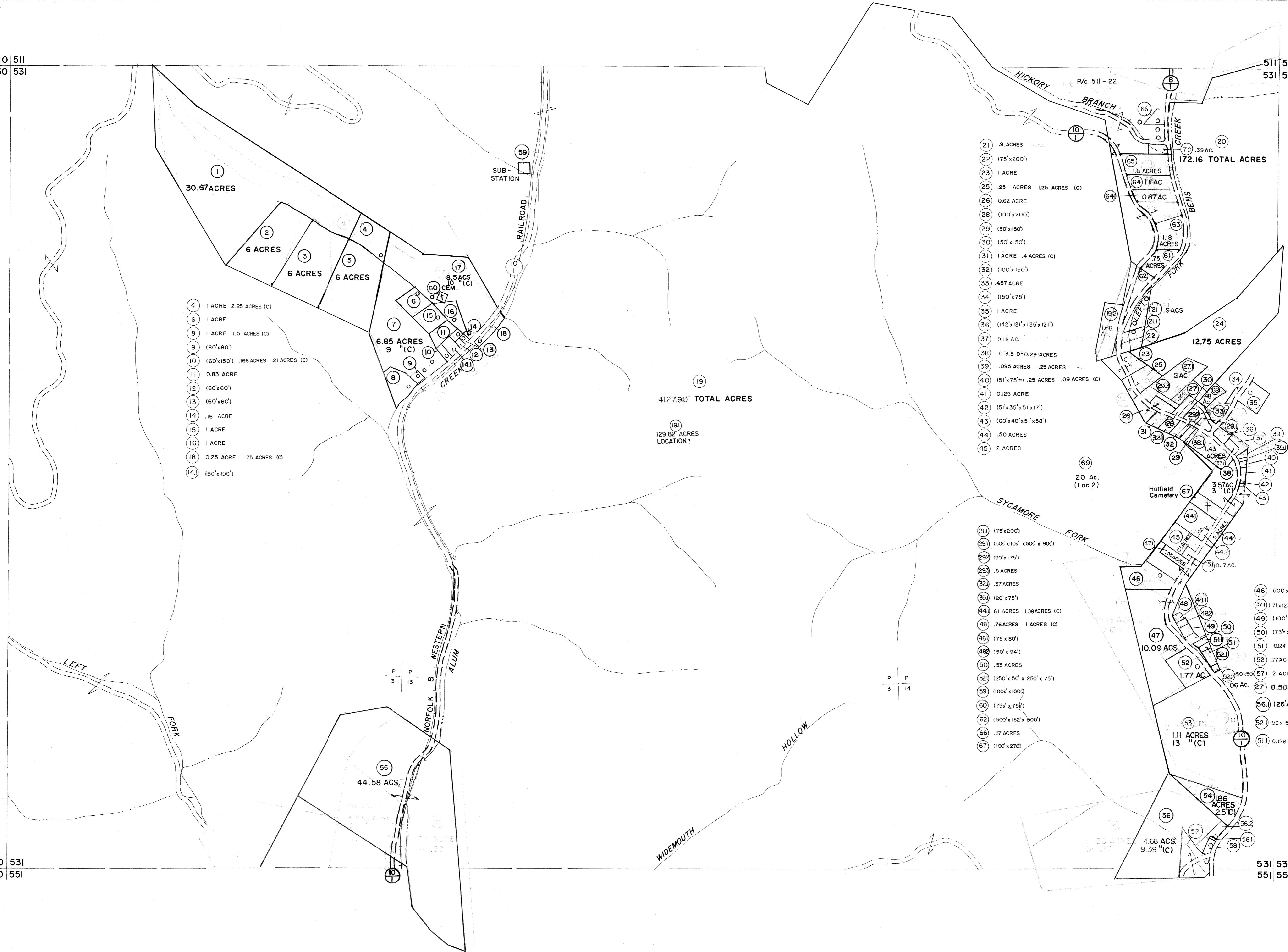


510 511  
530 531

511 512  
531 532

530 531  
550 551

531 532  
551 552



- 4 1 ACRE 2.25 ACRES (C)
- 6 1 ACRE
- 8 1 ACRE 1.5 ACRES (C)
- 9 (80'x80')
- 10 (60'x150') .166 ACRES .21 ACRES (C)
- 11 0.83 ACRE
- 12 (60'x60')
- 13 (60'x60')
- 14 .16 ACRE
- 15 1 ACRE
- 16 1 ACRE
- 18 0.25 ACRE .75 ACRES (C)
- 141 850'x100'

- 21 .9 ACRES
- 22 (75'x200')
- 23 1 ACRE
- 25 .25 ACRES 1.25 ACRES (C)
- 26 0.62 ACRE
- 28 (100'x200')
- 29 (50'x150')
- 30 (50'x150')
- 31 1 ACRE .4 ACRES (C)
- 32 (100'x150')
- 33 .457 ACRE
- 34 (150'x75')
- 35 1 ACRE
- 36 (142'x121'x135'x121')
- 37 0.16 AC.
- 38 C-3.5 D-0.29 ACRES
- 39 .095 ACRES .25 ACRES
- 40 (51'x75'x) .25 ACRES .09 ACRES (C)
- 41 0.125 ACRE
- 42 (51'x35'x51'x17')
- 43 (60'x40'x51'x58')
- 44 .50 ACRES
- 45 2 ACRES

- 211 (75'x200')
- 221 (50'x110' x 50' x 90')
- 222 (30'x175')
- 223 .5 ACRES
- 321 .37 ACRES
- 322 (20'x75')
- 441 .61 ACRES 1.08 ACRES (C)
- 48 .76 ACRES 1 ACRES (C)
- 481 (75'x80')
- 482 (150'x94')
- 50 .53 ACRES
- 521 (250'x50'x250'x75')
- 59 (100'x100')
- 60 (75'x75')
- 62 (100'x152'x500')
- 66 .37 ACRES
- 67 (100'x270')
- 46 (100'x400'x198'x198'x75'x350')
- 371 (71'x123) 0.20 AC.
- 49 (100'x94') .22 ACRE
- 50 (73'x94'x90'x80'x) .53 ACRE .16 "(C)
- 51 0.24 ACRE
- 52 1.77 ACRES
- 57 2 ACRES
- 27 0.50 AC
- 56.1 (26'x62'x26'x60) .4 ACRES
- 52.1 (50'x150'x80'x150)
- 51.1 0.126 A.

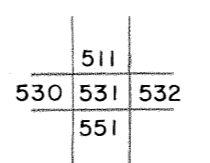
Legend

Property line	—	Original lot line	---
Edge of pavement or roadway	—	Deed lot number	(15)
Corporation line	---	Parcel or index number	(22)
District line	---	Improvement	o
County line	---	Railroad	—

Revisions

1	8-15-43	9	8-27-44	17	
2	10-1-43	10	6-28-44	18	
3	9-20-74	11	9-01-44	19	
4	3-31-84	12	3/05-84	20	
5	12-12-86	13	PEN+REE	21	
6	2-15-89	14		22	
7	Revised 10-11-90	15		23	
8	3-5-93 A.M.	16		24	

KEY MAP



**MINGO COUNTY**  
STATE OF WEST VIRGINIA  
Office of Assessor

DISTRICT

**STAFFORD**

SHEET NO: 531

Date, Aerial Photography: April, 1961  
Date, Map: July, 1962  
Photo No: Scale: 1" = 400'

For Tax Purposes Only  
Prepared by  
**MICHAEL BAKER, JR., INC.**  
Consulting Engineers  
Rochester, Pennsylvania