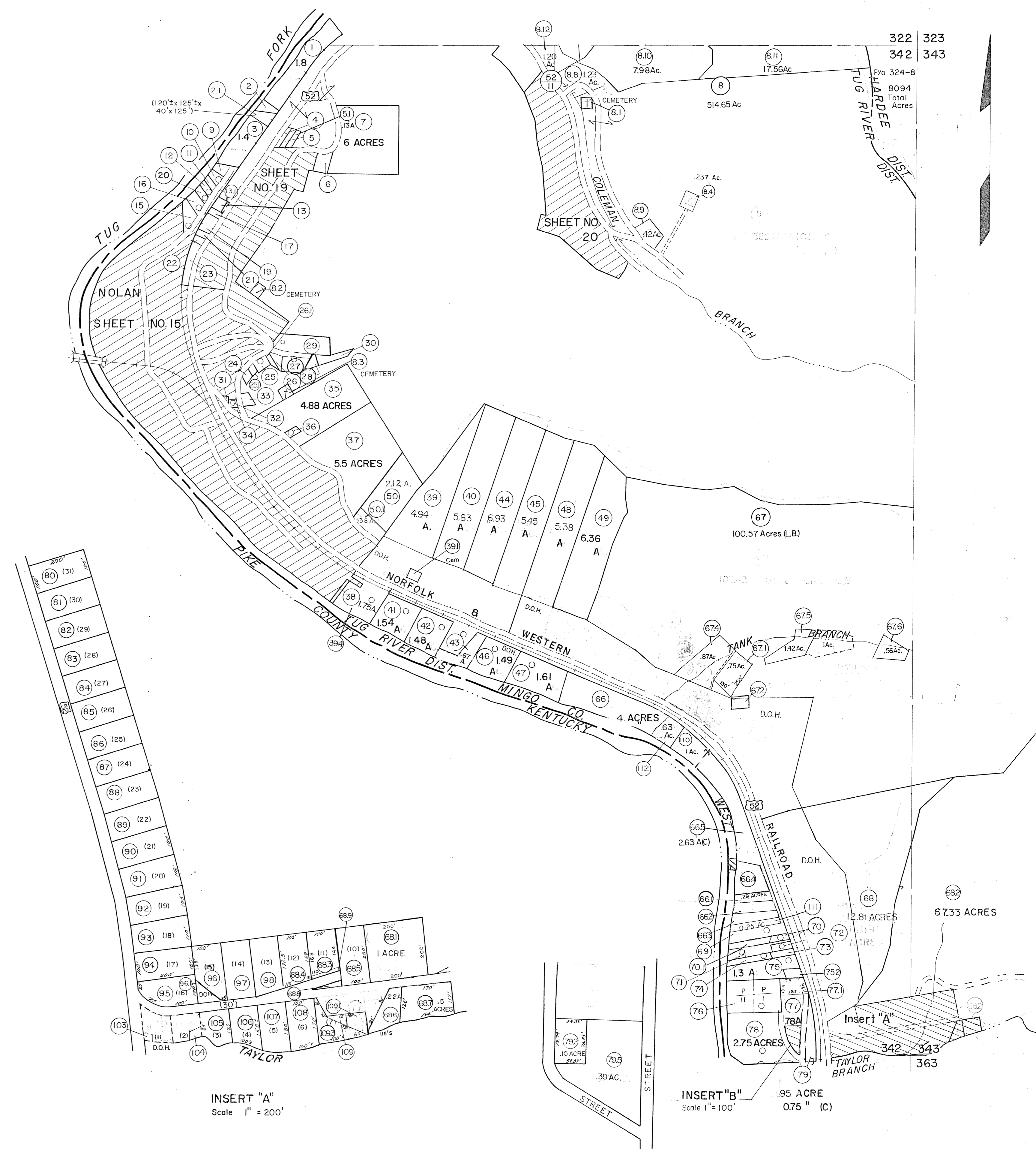


- 2 (30' x 130' x 100' x 110')
- 4 (40' x 150')
- 5 (40' x 150')
- 6 (100' x 150')
- 9 (100' x 110' x 55' x 120')
- 10 (100' x 130' x 56' x 110')
- 11 (40' x 125' x 40' x 130')
- 12 (40' x 140' x 40' x 125')
- 13 (40' x 110')
- 14 (40' x 110')
- 15 (130' x 90' x 40' x 150')
- 16 (90' x 150' x 80' x 140')
- 17 (40' x 110')
- 18 (80' x 110')
- 19 (40' x 110')
- 20 (55' x 140' x 55' x 130')
- 21 (40' x 110' x 40' x 100')
- 22 (40' x 100' x 40' x 80')
- 23 (30' x 30')
- 24 (50' x 100')
- 25 (100' x 110')
- 26 .122 ACRE .15 ACRE(C)
- 27 (200' x 150' x 150' x 125')
- 28 (14' x 85' x 100' x 126')
- 29 (100' x 280' x 120' x 383')
- 30 (267' x 50' x 220' x 85')
- 31 (110' x 70' x 75')
- 32 (50' x 90' x 50' x 70')
- 33 (90' x 75' x 100' x 100')
- 34 (150' x 90' x 110')
- 36 (50' x 100')
- 38 (20' x 175')
- 51 (150' x 200' x 200' x 100')
- 52 (150' x 100' x 150' x 200')
- 53 .1 ACRE .033 ACRE(C)
- 54 (43.5' x 200')
- 55 (70' x 150')
- 56 (57' x 80')
- 57 (40' x 150')
- 58 (50' x 180')
- 59 (80' x 97')
- 60 (90' x 97')
- 61 (57' x 115' x 55' x 130')
- 62 (50' x 130' x 120' x 139' x 9' x 26')
- 63 (50' x 100' x 26' x 92')
- 64 (50' x 100' x 45' x 100')
- 65 (119' x 26' x 9' x 52' x 105' x 80')
- 69 (110' x 420' x 110' x 370' x 0.5 A 1 A(C))
- 70 .09 ACRE .38 ACRE(C)
- 71 25 ACRE .34 ACRE(C)
- 72 (50' x 140')
- 73 (40' x 160')
- 74 (40' x 300' x 40' x 280')
- 76 1.8 ACRES
- 80 100' x 170' x 100' x 180'
- 85 (75' x 200')
- 86 (75' x 200' x 50' x 200')
- 88 (50' x 200')
- 88 (150' x 200' x 250' x 200')
- 88 (70' x 108')
- 25 (93' x 220' x 220' x 230') .57A .06 A(C)
- 26 (125' x 65' x 60' x 20')
- 81 (75' x 75')
- 83 (80' x 80')
- 82 (100' x 70')
- 89 (70' x 80')
- 87 (190' x 120')
- 88 (100' x 20' x 100')
- 70 (.16 ACRE)
- 13 (128' x 15' x 128')



For Tax Purposes Only
 Prepared by
MICHAEL BAKER, JR., INC.
 Consulting Engineers
 Rochester, Pennsylvania

Legend	
Property line	Original lot line
Edge of pavement or roadway	Deed lot number
Corporation line	Parcel or index number
District line	Improvement
County line	Railroad

Revisions			
1	9-12-63	9	Revised 11-1-90
2	10-1-63	10	2-13-93 A.M.
3	11-1-63	11	11-30-93 A.M.
4	9-25-74	12	2-9-97 A.M.
5	3-31-81	13	6-98 A.M.
6	9-22-86 PENTREE	14	1-00 A.M.
7	6-1-87 L.E.S.	15	5-01 A.M.
8	Revised 10-2-89	16	4-05 A.M.

KEY MAP
 322
 342 343

MINGO COUNTY
 STATE OF WEST VIRGINIA
 Office of Assessor

DISTRICT
TUG RIVER
 SHEET NO: 342
 Date, Aerial Photography: April, 1961
 Date, Map: July, 1962
 Photo No. Scale: 1" = 400'