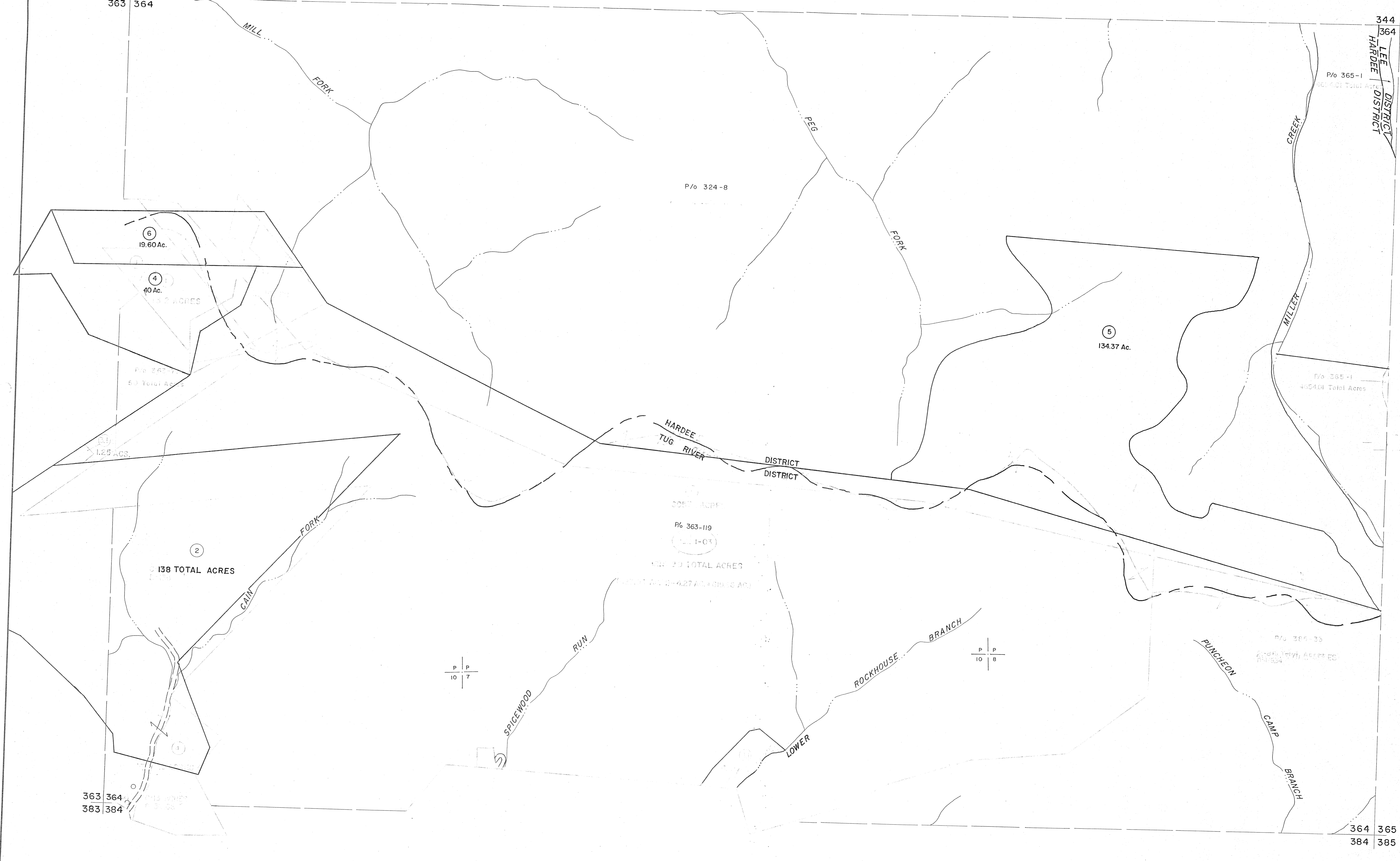


343 344  
363 364

344 345  
364 365



363 364  
383 384

364 365  
384 385

**For Tax Purposes Only**

Prepared by  
**MICHAEL BAKER, JR., INC.**  
Consulting Engineers  
Rochester, Pennsylvania

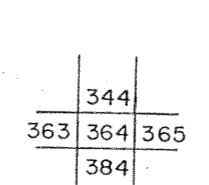
**Legend**

|                             |   |                        |      |
|-----------------------------|---|------------------------|------|
| Property line               | — | Original lot line      | —    |
| Edge of pavement or roadway | — | Deed lot number        | (15) |
| Corporation line            | — | Parcel or index number | (2)  |
| District line               | — | Improvement            | (9)  |
| County line                 | — | Railroad               | (O)  |

**Revisions**

|   |                   |    |  |    |  |
|---|-------------------|----|--|----|--|
| 1 | 3-15-63           | 9  |  | 17 |  |
| 2 | 10-1-63           | 10 |  | 18 |  |
| 3 | 3-21-64           | 11 |  | 19 |  |
| 4 | Revised to 7-1-85 | 12 |  | 20 |  |
| 5 | 9-23-86 PENTREE   | 13 |  | 21 |  |
| 6 | 3-27-87           | 14 |  | 22 |  |
| 7 | 10-1-87           | 15 |  | 23 |  |
| 8 |                   | 16 |  | 24 |  |

**KEY MAP**



**MINGO COUNTY**  
STATE OF WEST VIRGINIA  
Office of Assessor

DISTRICT **TUG RIVER HARDEE**

**SHEET NO: 364**

Date, Aerial Photography: April 1961 Date, Map: July 1963