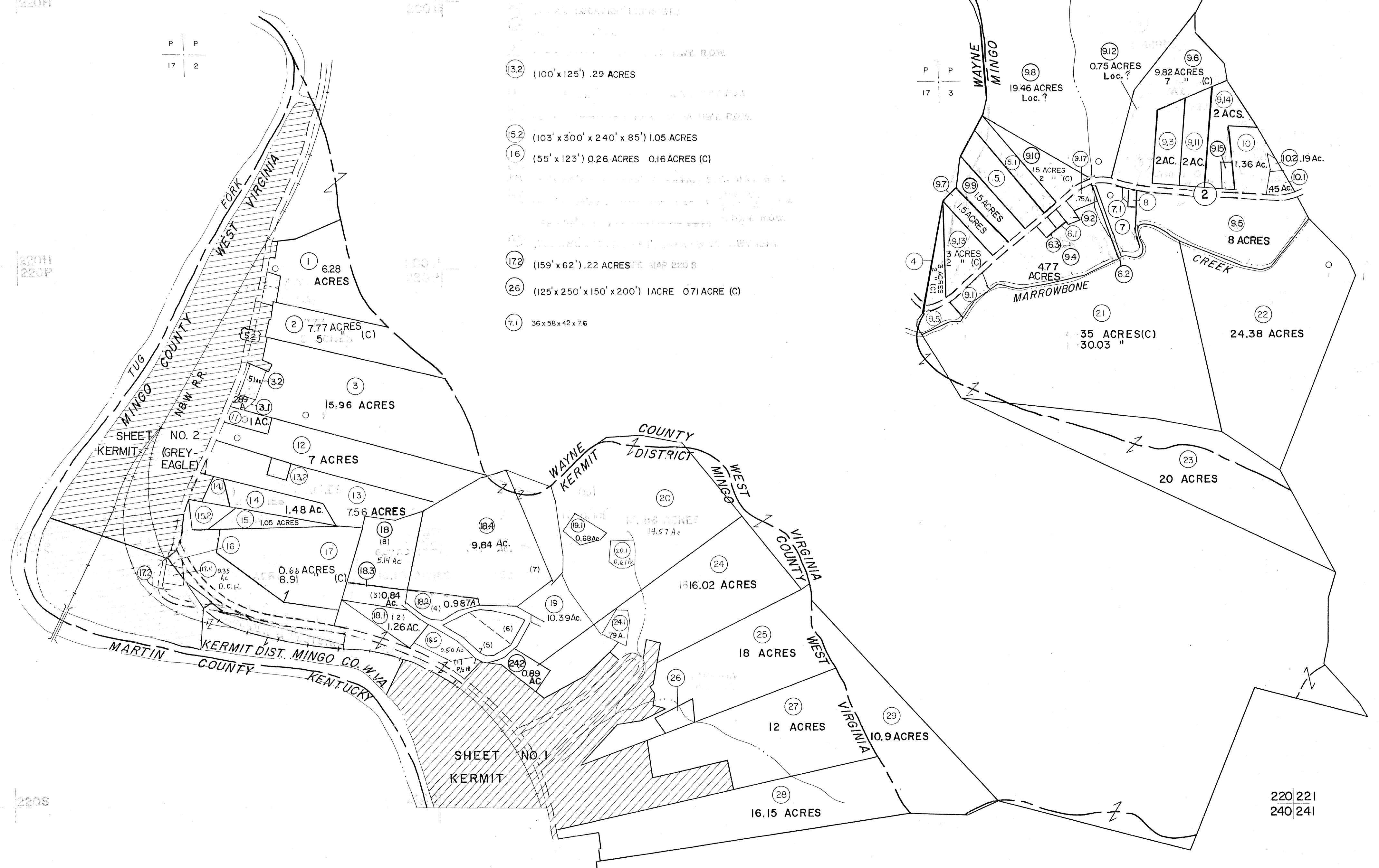


200
220

200 201
220 221



- 5 (170' x 500' x 170' x 600' s) 2.15 ACRES(C) 0.93 ACRES
- 51 (100' x 600' s x 100' x 700' s) 1.49 ACRES (C) 0.54 ACRES
- 6.1 (75' x 100') .17 ACRES
- 7 1.88 ACRES
- 8 (50' x 100') .11 ACRES
- 6.2 (45' x 289' x 195' x 45' x 195' x 289') 0.13 ACRES
- 6.3 (75' x 50' x 100' x 50' x 75' x 100') 0.23 ACRES
- 9.2 40 ACRES
- 13.2 (100' x 125') .29 ACRES
- 15.2 (103' x 300' x 240' x 85') 1.05 ACRES
- 16 (55' x 123') 0.26 ACRES 0.16 ACRES (C)
- 17.2 (159' x 62') .22 ACRES MAP 220 S
- 26 (125' x 250' x 150' x 200') 1 ACRE 0.71 ACRE (C)
- 7.1 36 x 58 x 42 x 7.6

200
220

220 221
240 241

220
240

220S

For Tax Purposes Only

Prepared by
MICHAEL BAKER, JR., INC.
Consulting Engineers
Rochester, Pennsylvania

Legend	
Property line	—————
Edge of pavement or roadway	—————
Corporation line	—————
District line	—————
County line	—————
Original lot line	—————
Dead lot number	(15)
Parcel or index number	(9)
Improvement	o
Railroad	—————

Revisions			
1	3-15-63	9	1-97 AM
2	10-1-63	10	5-98 AM
3	9/23/74	11	9-01 AM
4	3-31-84	12	3/05 B.M.
5	7-1-84	13	8-07 AM
6	9-5-88	14	PENTREE
7	revised to 2-15-89	15	
8	revised to 1-1-90	16	

KEY MAP
200
220 221
240

MINGO COUNTY
STATE OF WEST VIRGINIA
Office of Assessor

DISTRICT
KERMIT
SHEET NO: 220
Date, Aerial Photography: April, 1961 Date, Map: July, 1962
Photo No: Scale: 1" = 400'