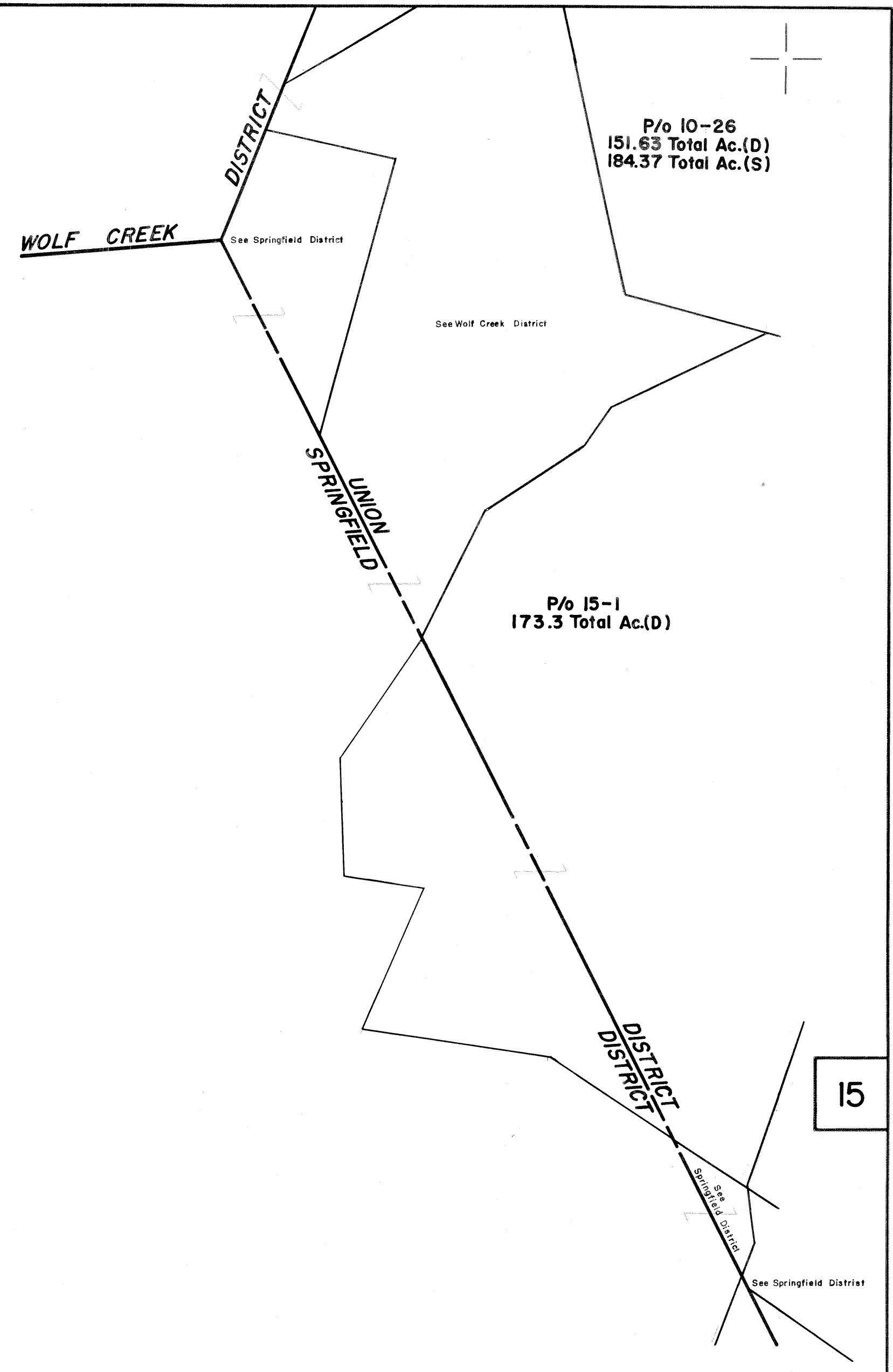
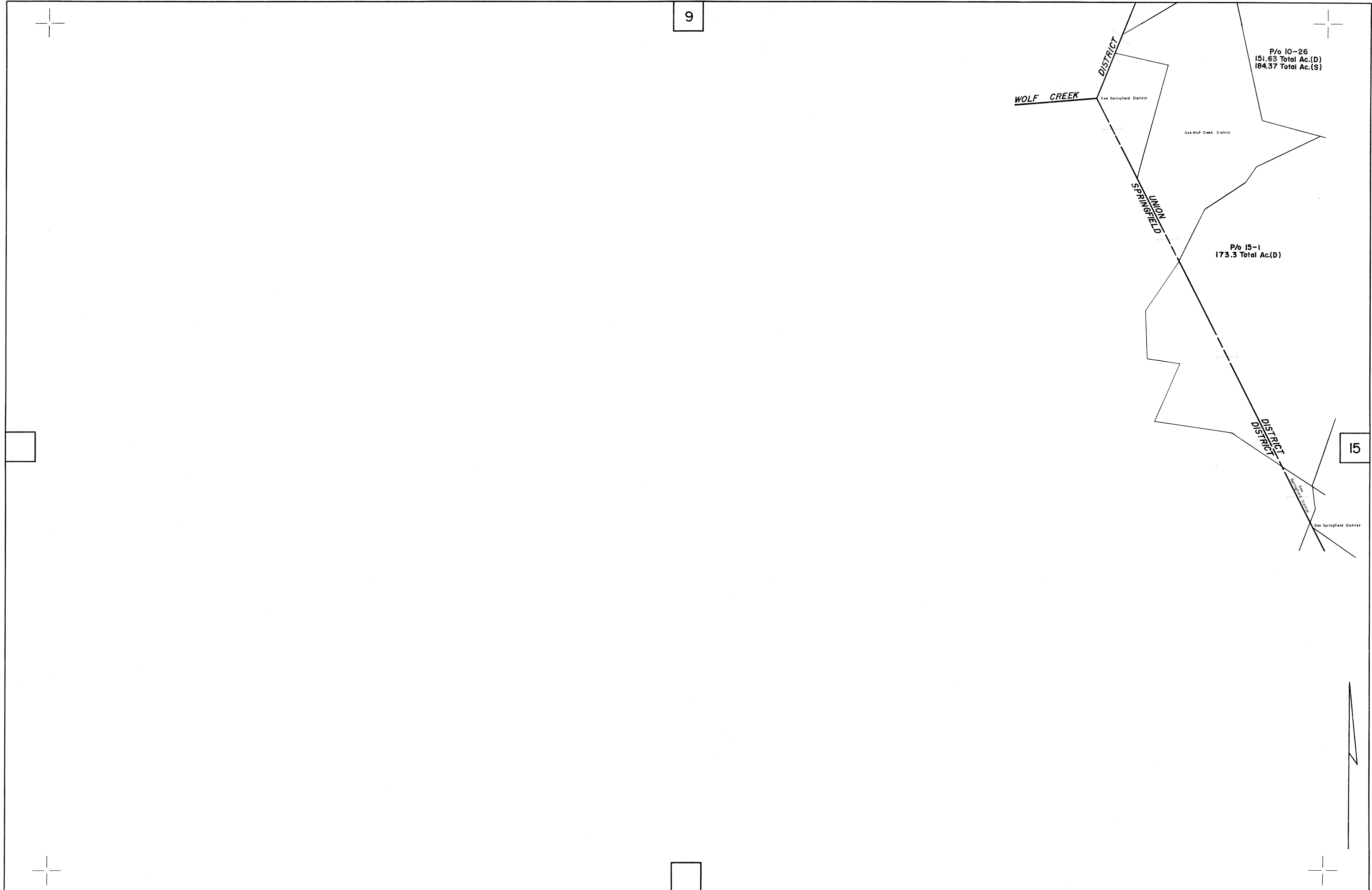


9



15



FOR TAX PURPOSES ONLY

PREPARED BY
AERO SERVICE CORPORATION
210 E. COURTLAND STREET PHILADELPHIA, PENNA.

Legend

| | | | |
|-----------------------------|-------|----------------------------------|-------|
| Property line | ----- | Original lot line | |
| Edge of pavement or roadway | ----- | Deed lot number in parenthesis | (15) |
| Corporation line | ----- | Parcel or index number in circle | ⊙ |
| District line | ----- | Improvement | ○ |
| County line | ----- | Railroad | +++++ |

Revisions

| | | | |
|---|-------------------|----|----|
| 1 | Revised to 7-1-84 | 9 | 17 |
| 2 | | 10 | 18 |
| 3 | | 11 | 19 |
| 4 | | 12 | 20 |
| 5 | | 13 | 21 |
| 6 | | 14 | 22 |
| 7 | | 15 | 23 |
| 8 | | 16 | 24 |

MONROE COUNTY — WEST VIRGINIA
Office of Assessor

UNION DISTRICT

City — Town — District:
Map No: **14**
Date, Aerial Photography: 3-29-62 Date, Map: 12-31-63
Photo No: 36-107 & 108, 37-77 & 78 Scale: 1" = 400'