



**FOR TAX PURPOSES ONLY**

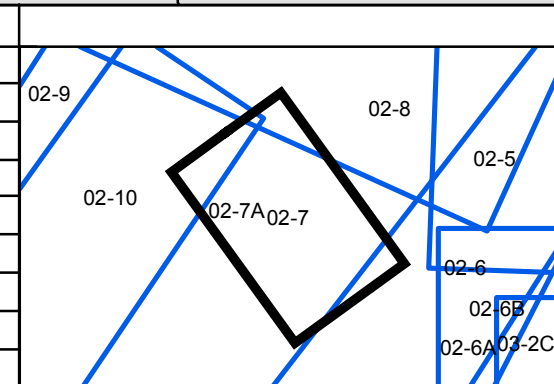
Prepared By:  
**Ronald McIntire**  
 Morgan County Assessor

Legend	
	District Boundary
	Previous Deed
	Property
	Road Easement
	Railroad Right of Way
	Road Right of Way
	River
	Deed lot Number
	Parcel or Index Number
	Unknown
	Improvement
	Cemetery
	Church
	Educational

**Restriction**

REPRODUCTION OF TAX MAPS PROHIBITED  
 - It is unlawful to copy, photoduplicate, scan, photograph, or otherwise reproduce this tax map. Pursuant to the provisions of W.Va. CSR § 189-5-5 (2013) no person may reproduce, copy, distribute or sell copies of tax maps prepared by the counties without having first obtained the written permission of the Morgan County Assessor. In addition to other penalties and civil remedies, any person who, without the written permission of the Morgan County Assessor, reproduces, copies, distributes, or sells or who allows the reproduction, copying, distribution or sale of tax maps prepared by the Morgan County Assessor, shall be refused permission by the Morgan County Assessor or Assessor's agent to purchase tax maps in the future.

Revisions			
1	Revised 12/30/2016	10	28
2		11	29
3		12	30
4		13	31
5		14	32
6		15	33
7		16	34
8		17	35
9		18	36



**MORGAN COUNTY**  
 Assessor's Office  
 Ronald McIntire, Assessor  
 Berkeley Springs, WV

**BATH**

District: 02 Map No: 7A  
 Date of Publication: 1/25/2017  
 Scale: 1" = 200'