



FOR TAX PURPOSES ONLY

Prepared By:
Ronald McIntire
 Morgan County Assessor

Legend

- District Boundary
- Previous Deed
- Property
- Road Easement
- Railroad Right of Way
- Road Right of Way
- River

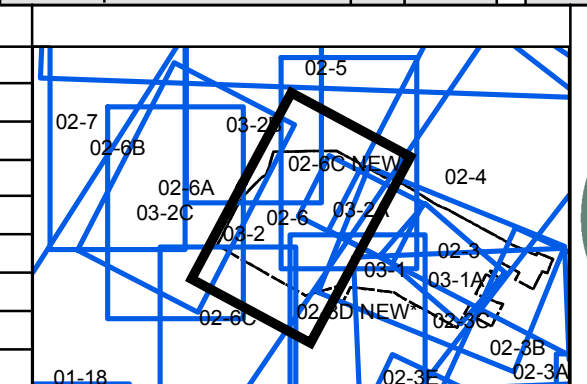
- Dead lot Number (15)
- Parcel or Index Number (9)
- Unknown
- Improvement (1)
- Cemetery (1)
- Church (1)
- Educational (1)

Restriction

REPRODUCTION OF TAX MAPS PROHIBITED - It is unlawful to copy, photology, scan, photograph, or otherwise reproduce this tax map. Pursuant to the provisions of W. Va. CSR § 189-5-5 (2013) no person may reproduce, copy, distribute or sell copies of tax maps prepared by the counties without having first obtained the written permission of the Morgan County Assessor. In addition to other penalties and civil remedies, any person who, without the written permission of the Morgan County Assessor, reproduces, copies, distributes, or sells or who allows the reproduction, copying, distribution or sale of tax maps prepared by the Morgan County Assessor, shall be refused permission by the Morgan County Assessor or Assessor's agent to purchase tax maps in the future.

Revisions

| | | | | |
|---|--------------------|----|----|----|
| 1 | Revised 12/30/2016 | 10 | 19 | 28 |
| 2 | | 11 | 20 | 29 |
| 3 | | 12 | 21 | 30 |
| 4 | | 13 | 22 | 31 |
| 5 | | 14 | 23 | 32 |
| 6 | | 15 | 24 | 33 |
| 7 | | 16 | 25 | 34 |
| 8 | | 17 | 26 | 35 |
| 9 | | 18 | 27 | 36 |



MORGAN COUNTY
 Assessor's Office
Ronald McIntire, Assessor
 Berkeley Springs, WV

BATH (BERK.SPR.) CORP
 District: 03 Map No: 2
 Date of Publication: 1/25/2017
 Scale: 1" = 200'